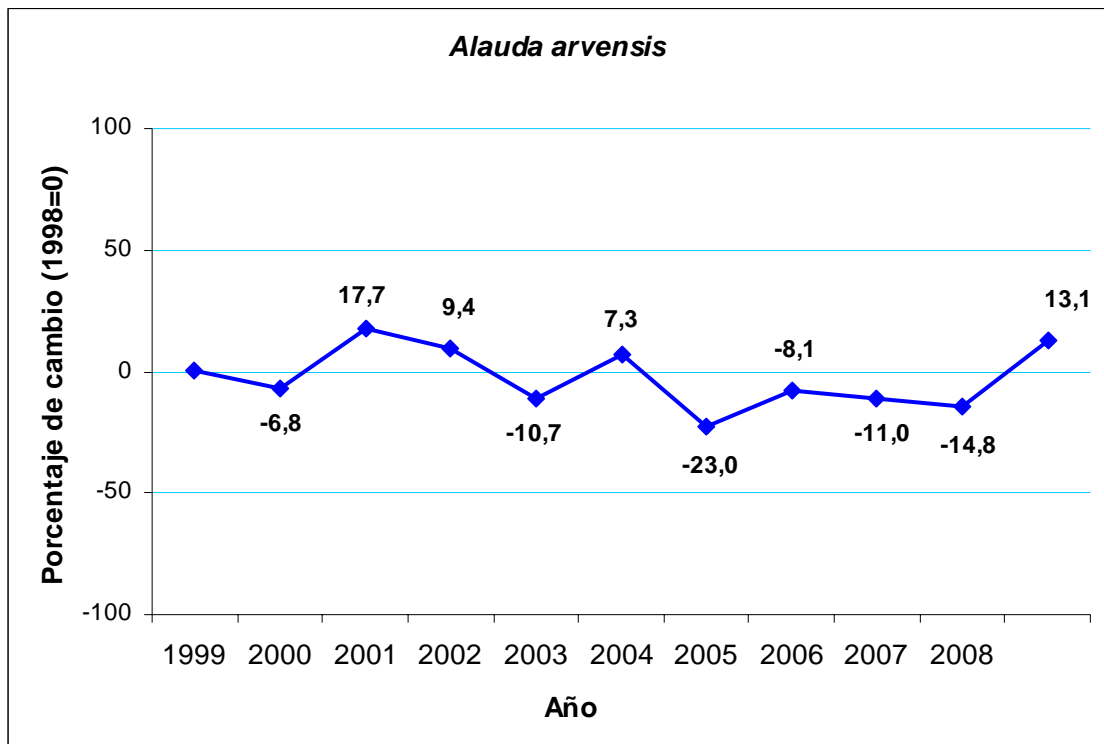
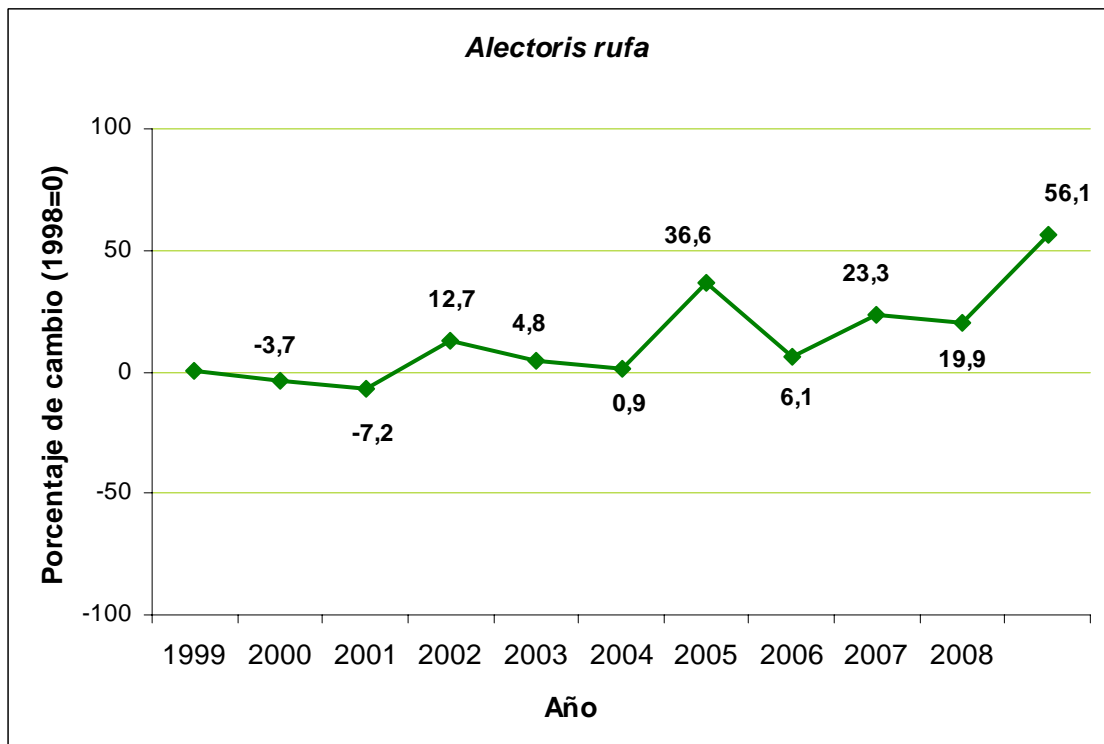


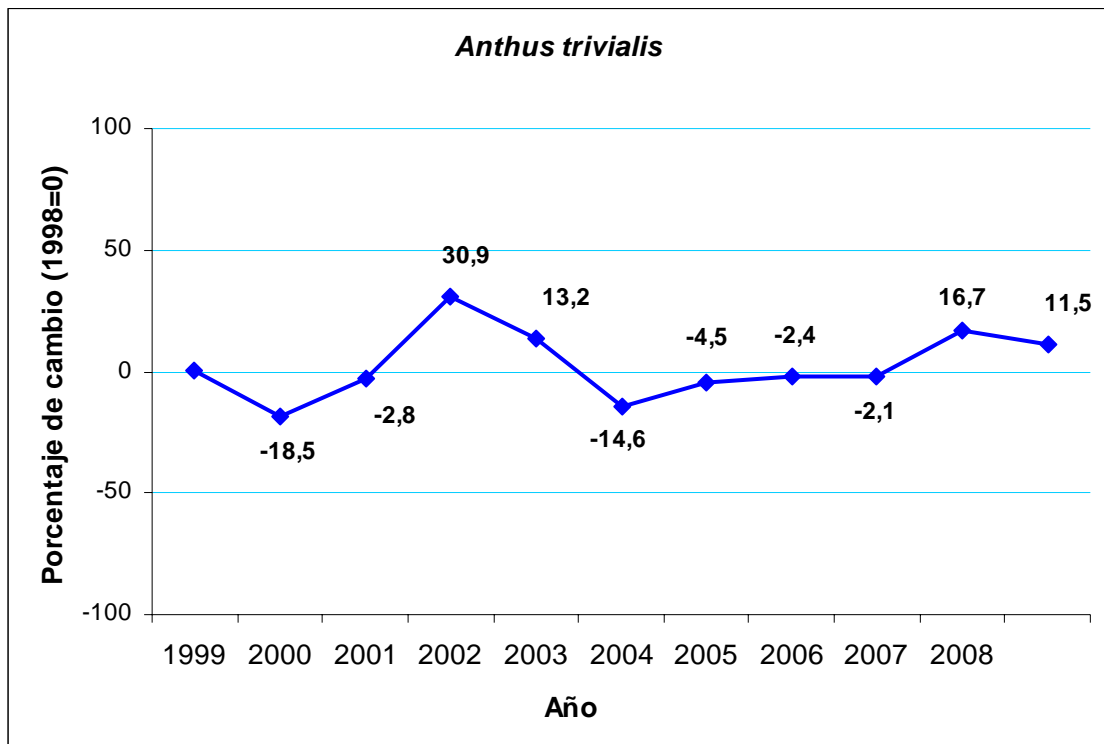
Alondra común



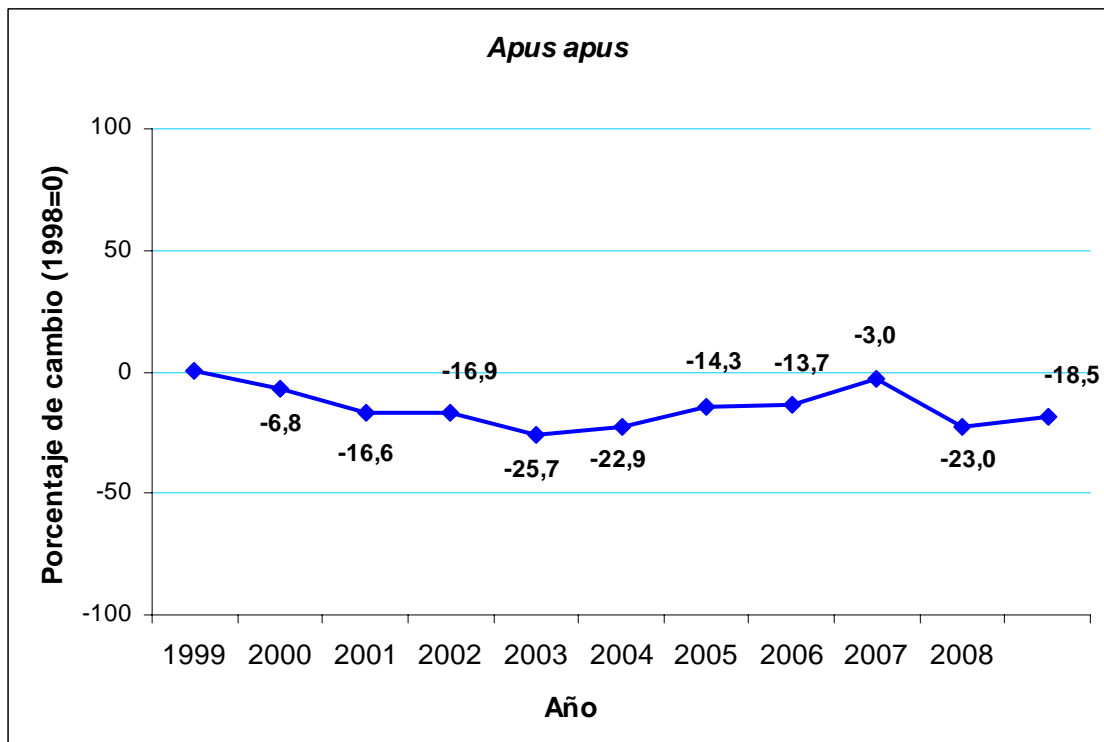
Perdiz común



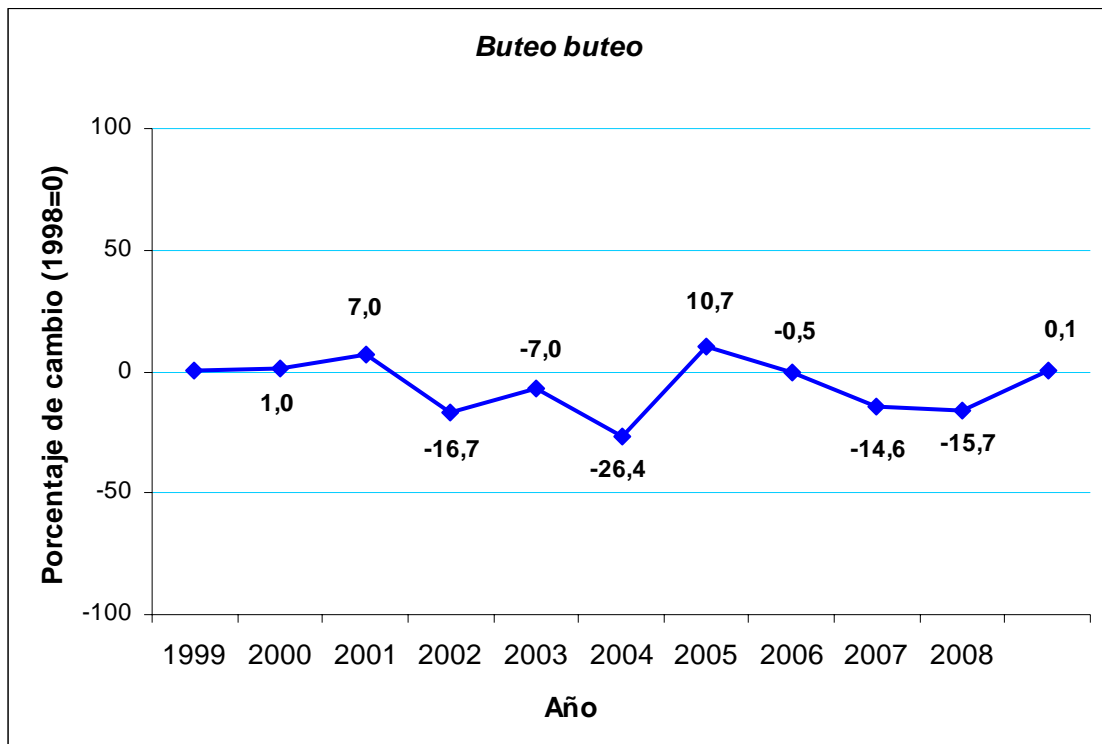
Bisbita arbóreo



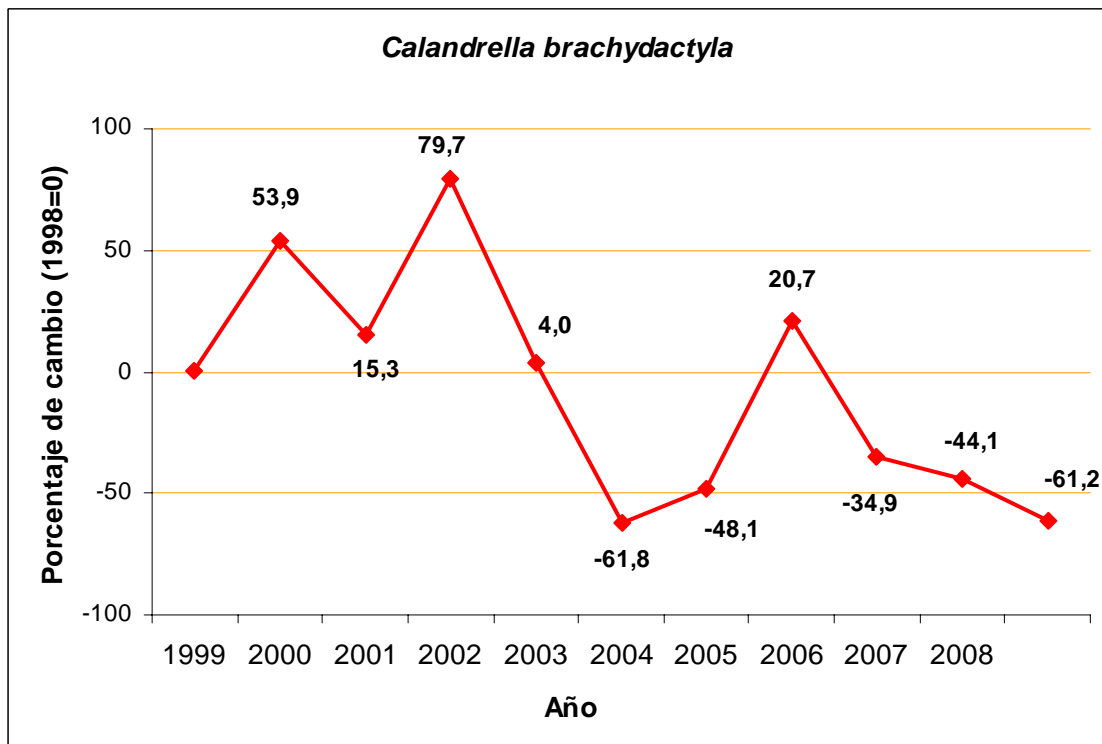
Vencejo común



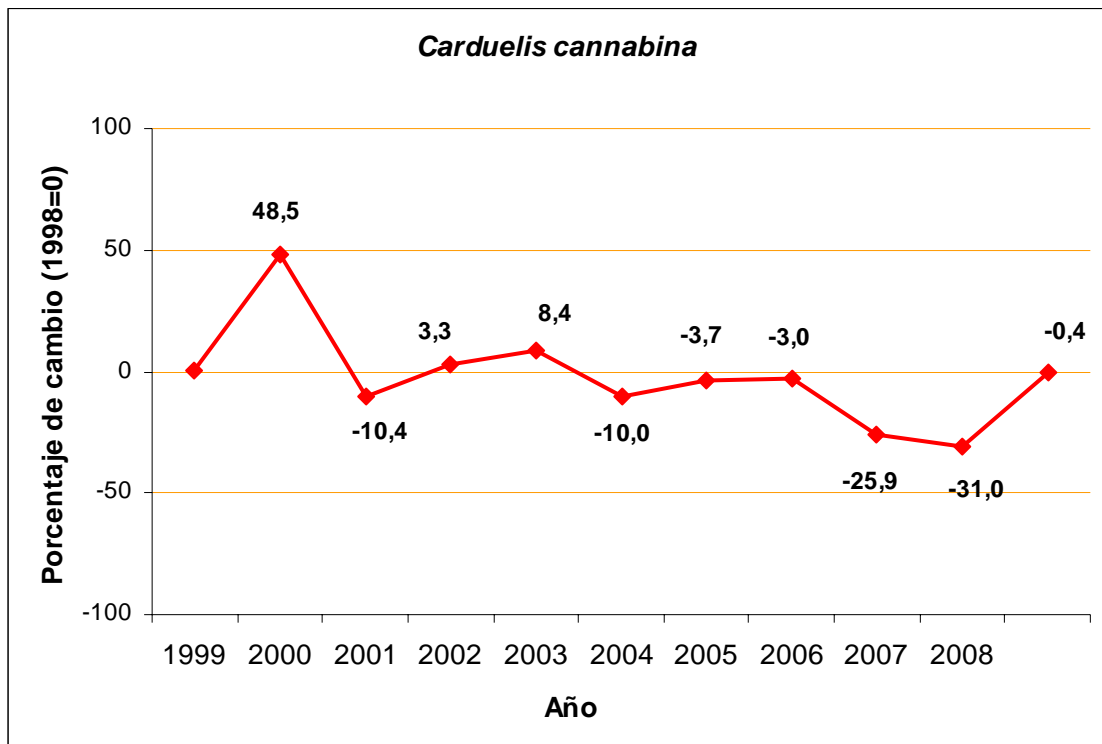
Ratonero común



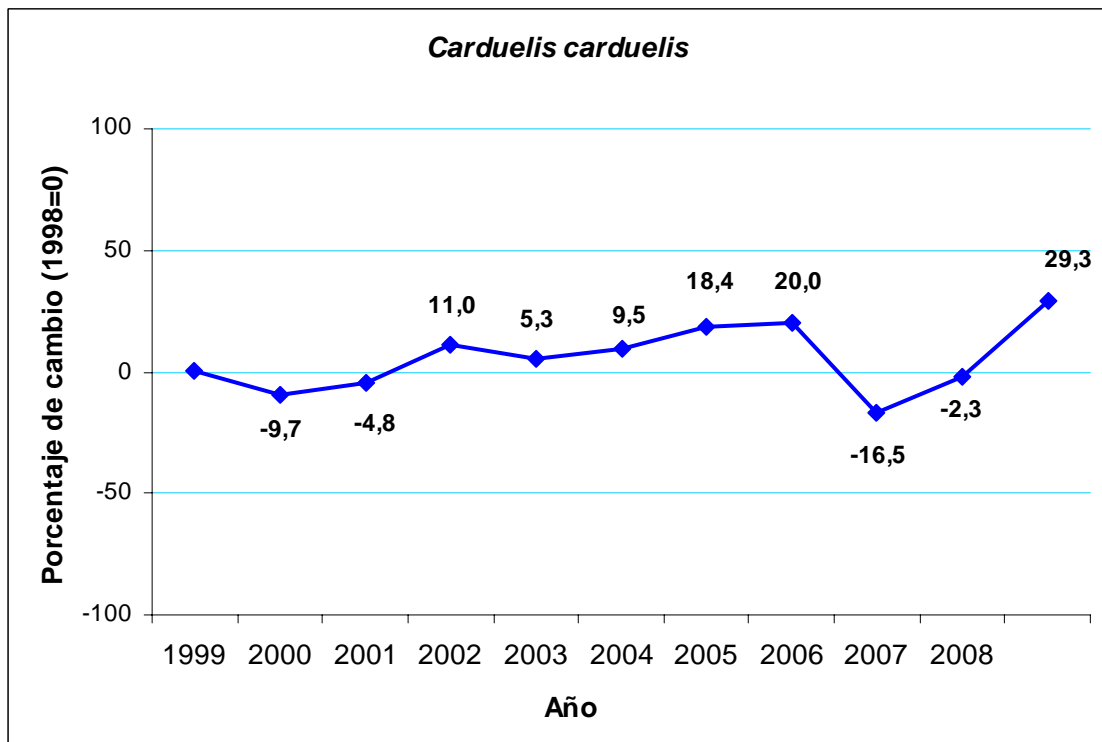
Terrera común



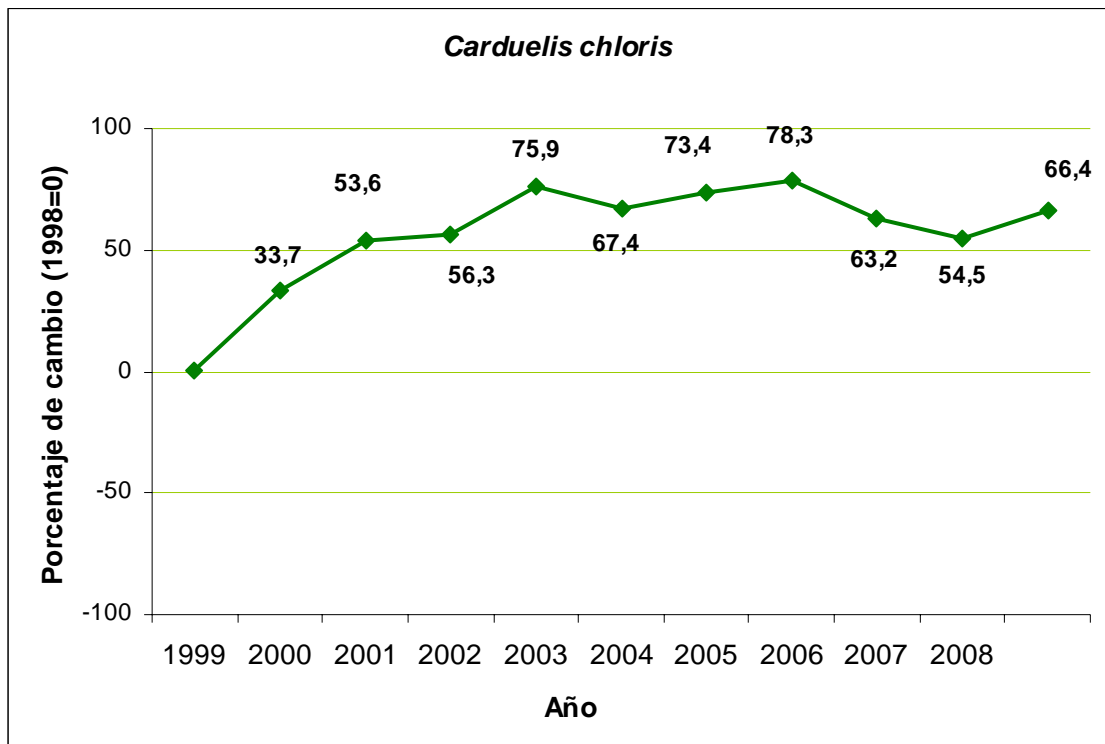
Pardillo común



Jilguero



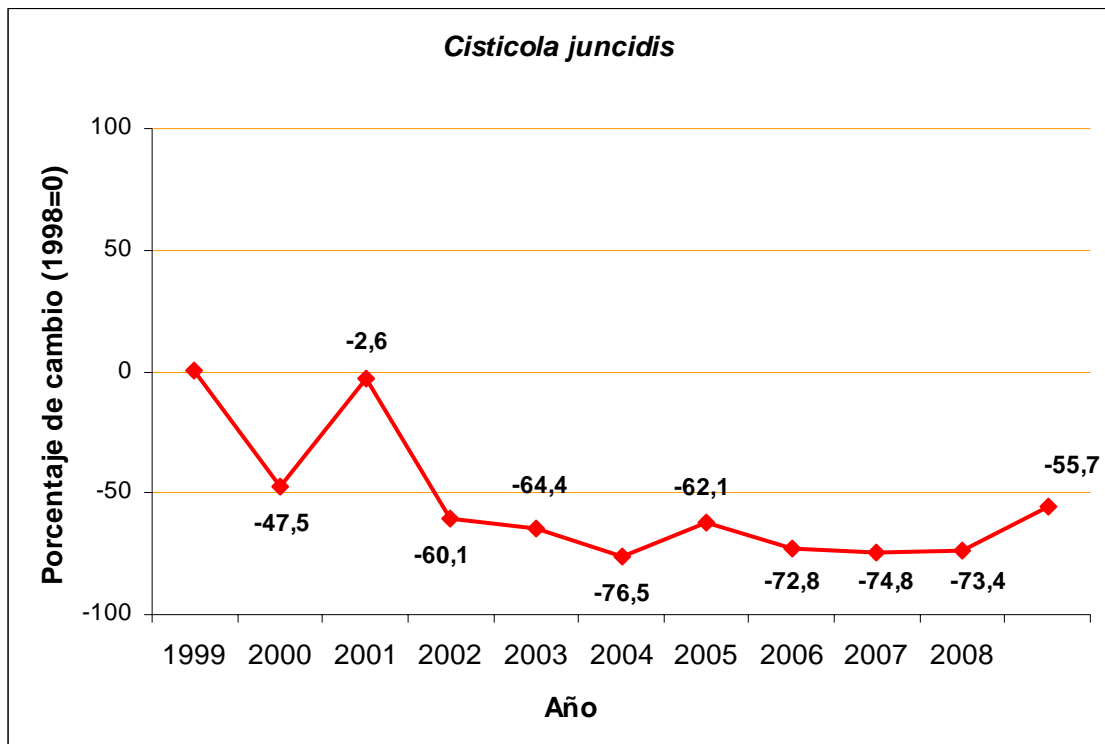
Verderón común



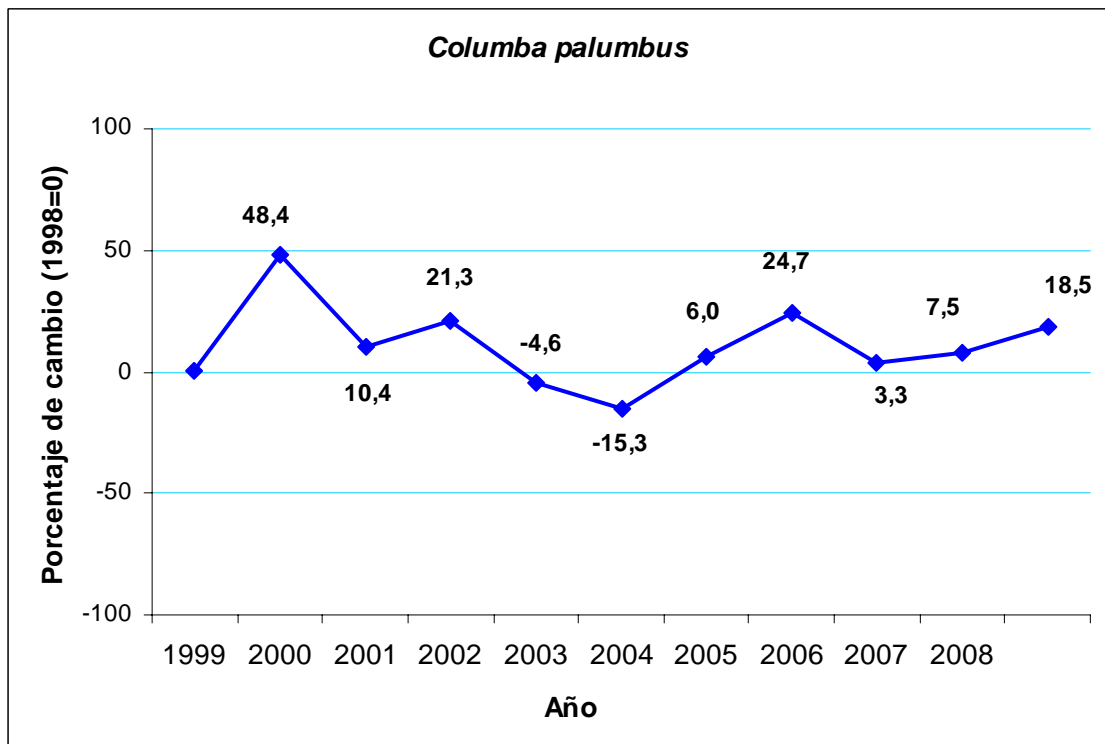
Ruiseñor bastardo



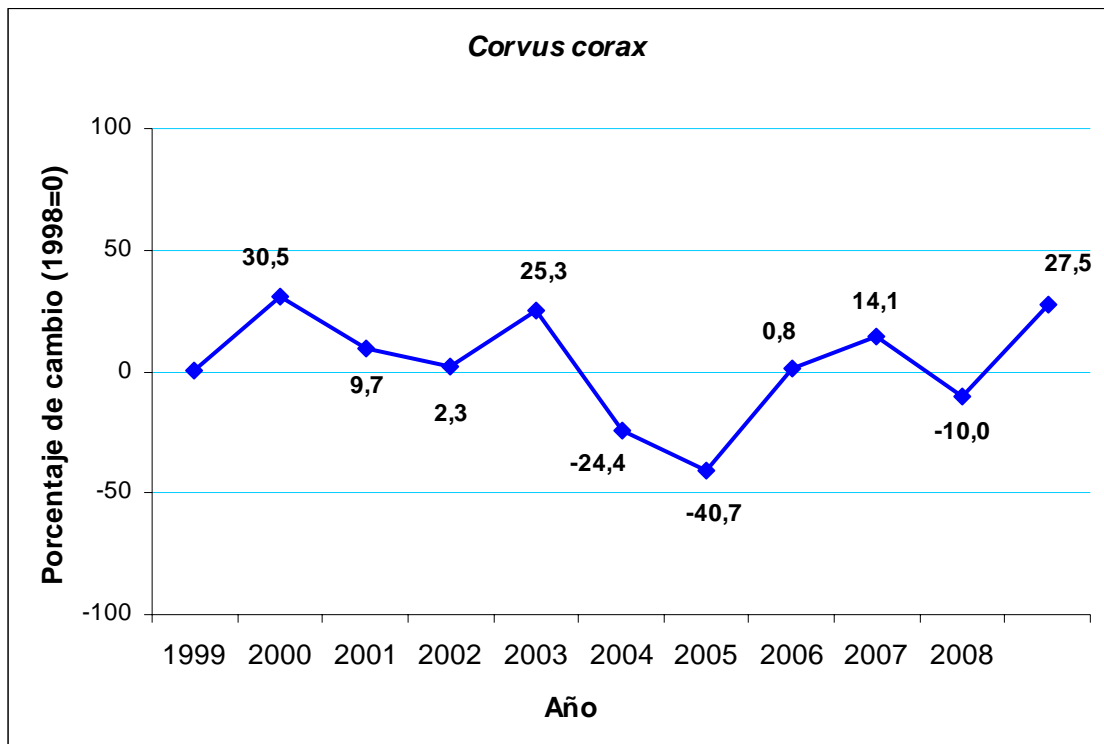
Buitrón



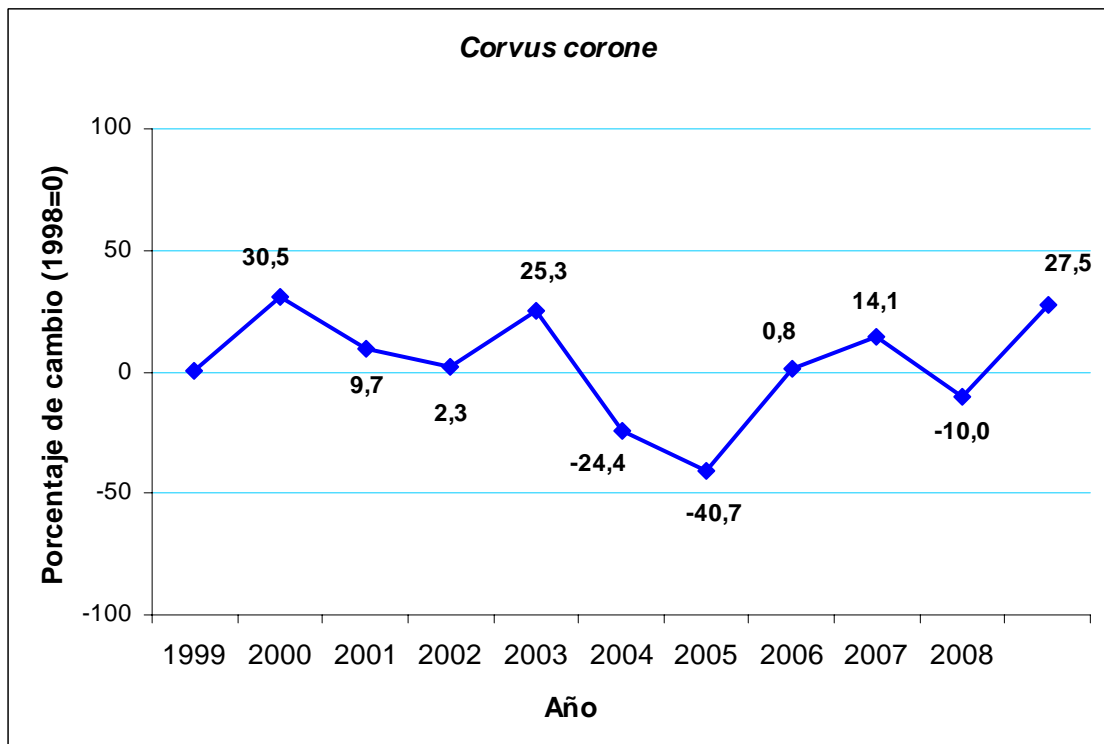
Paloma torcaz



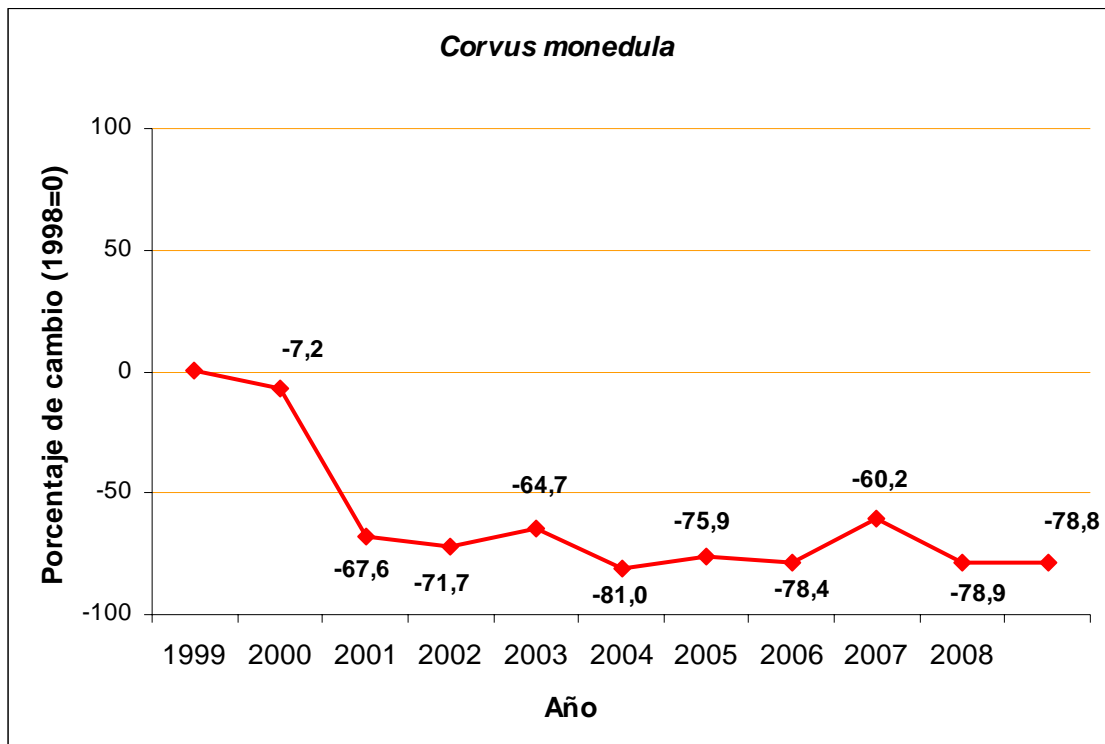
Cuervo



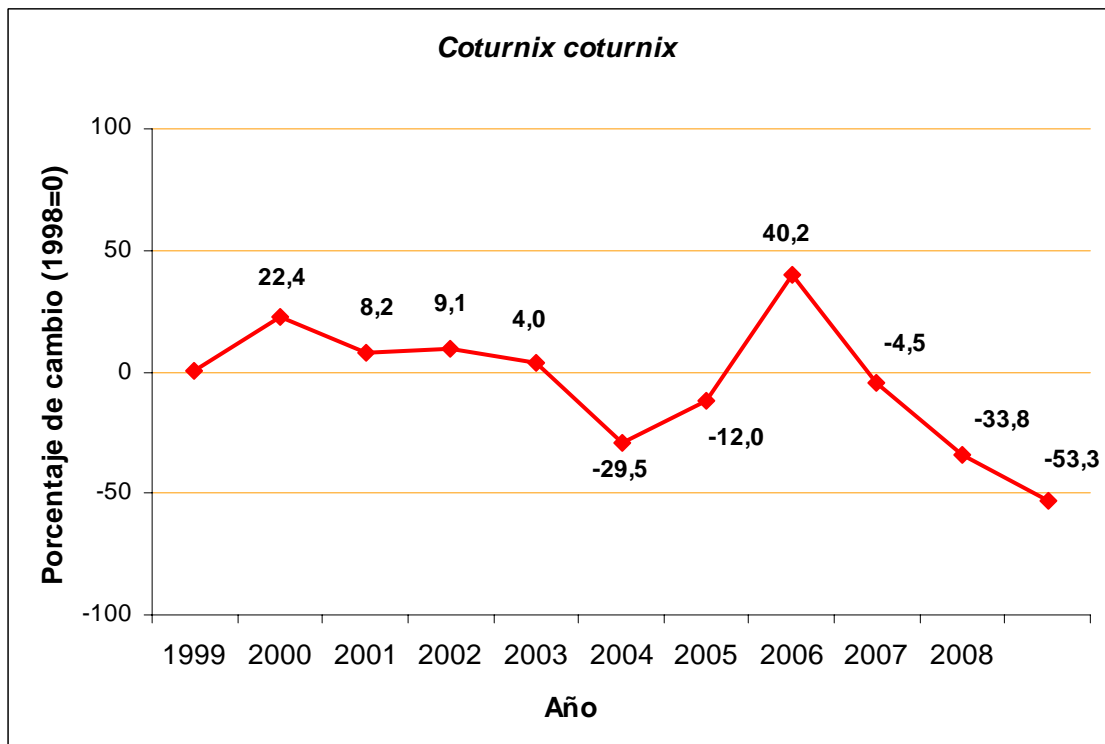
Corneja común



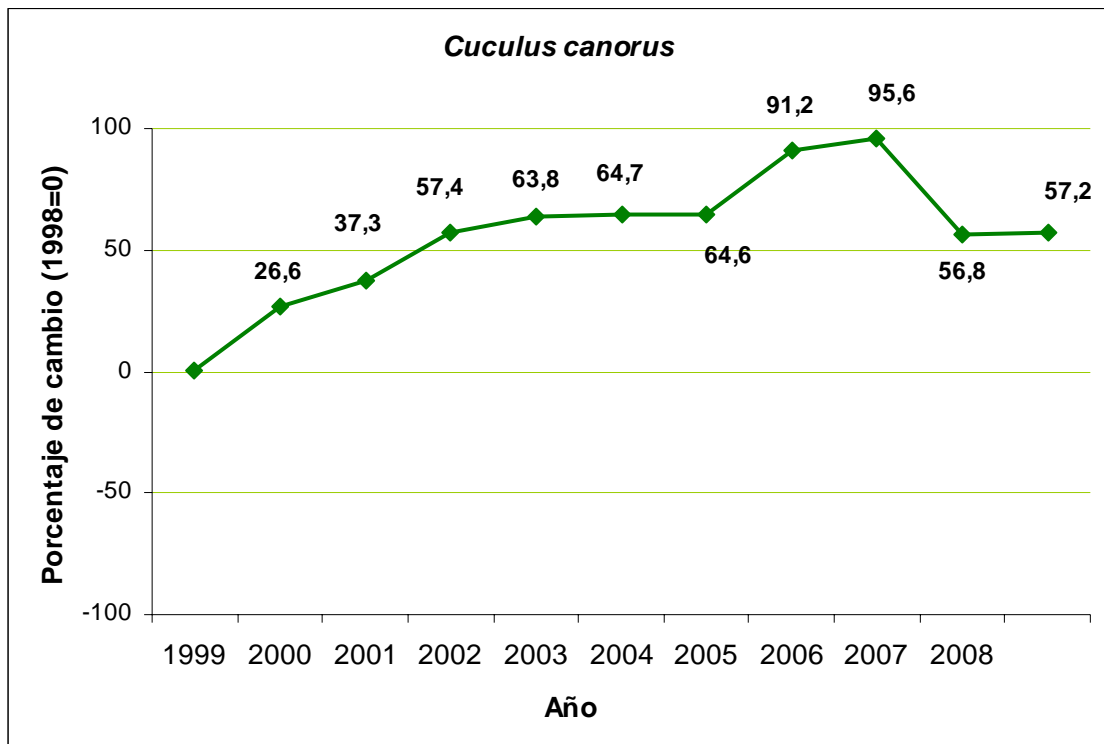
Grajilla



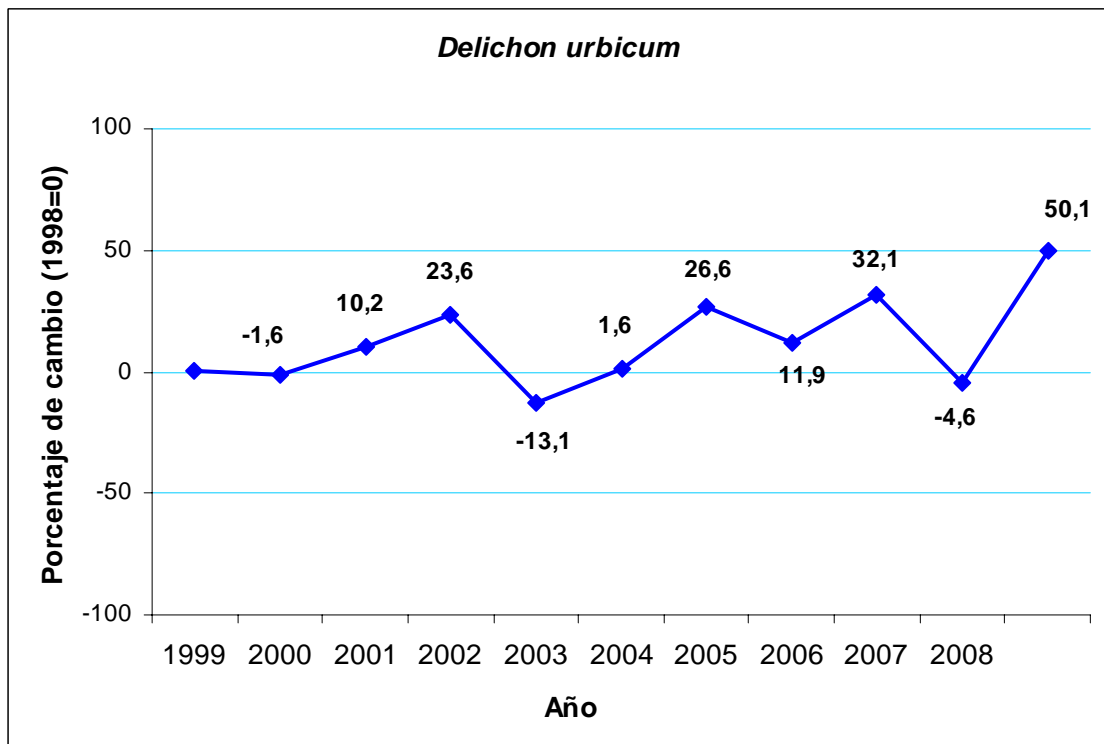
Codorniz común



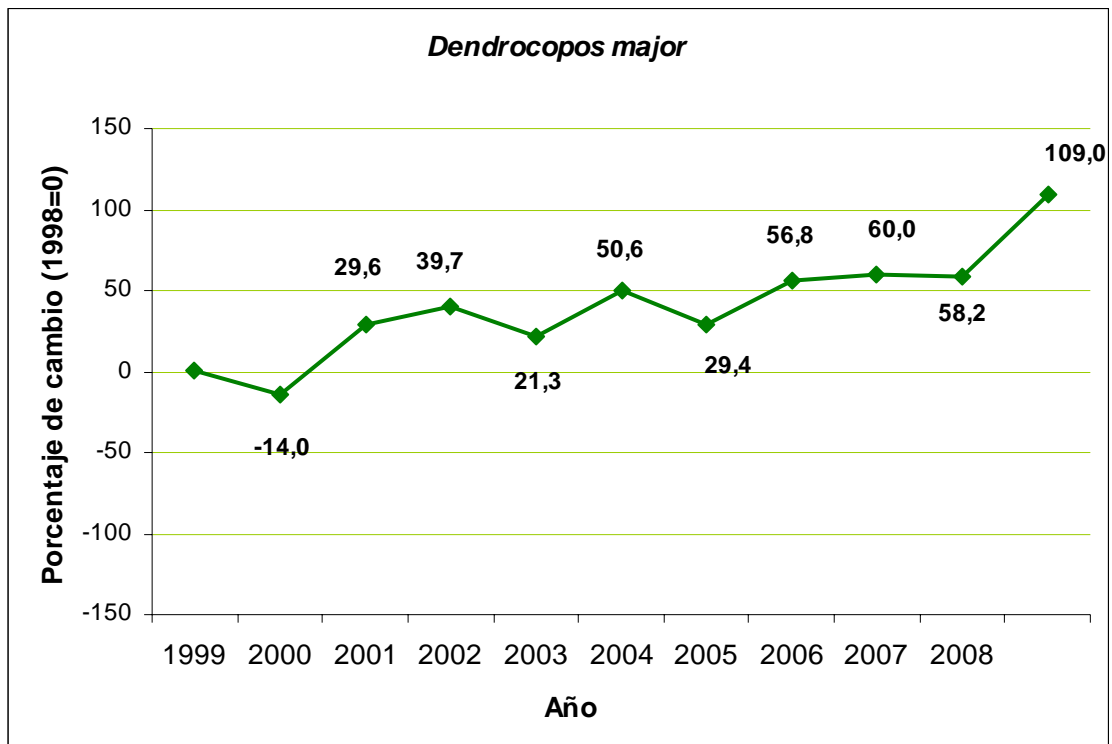
Cuco común



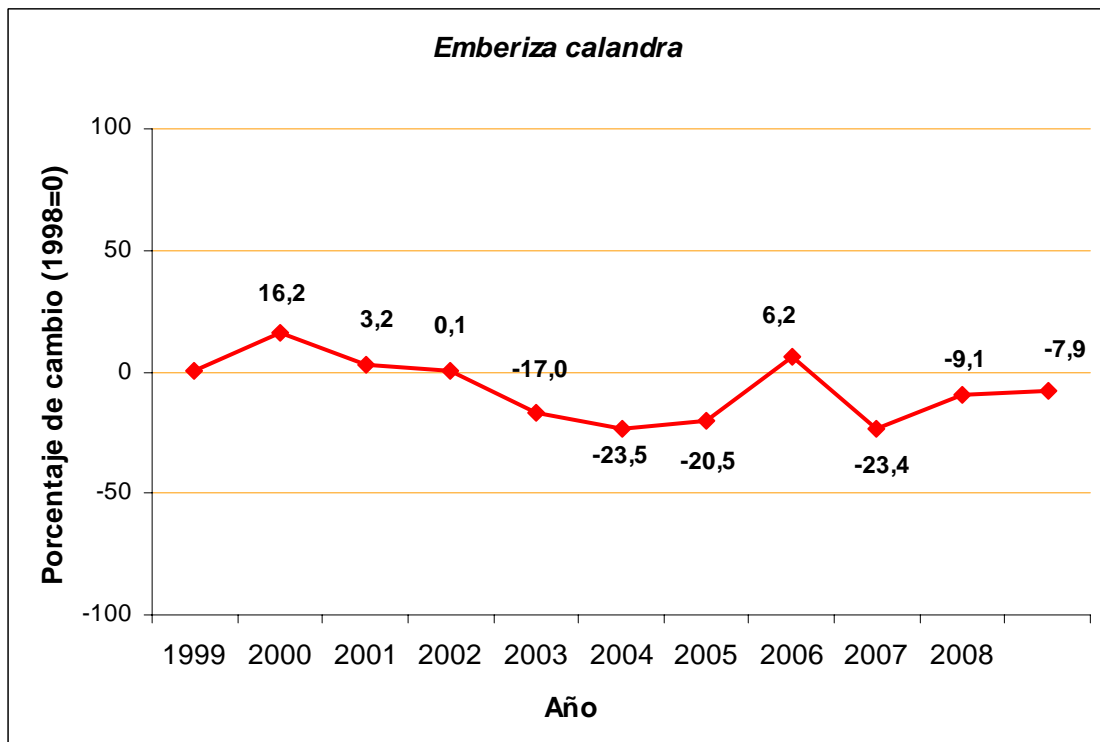
Avión común



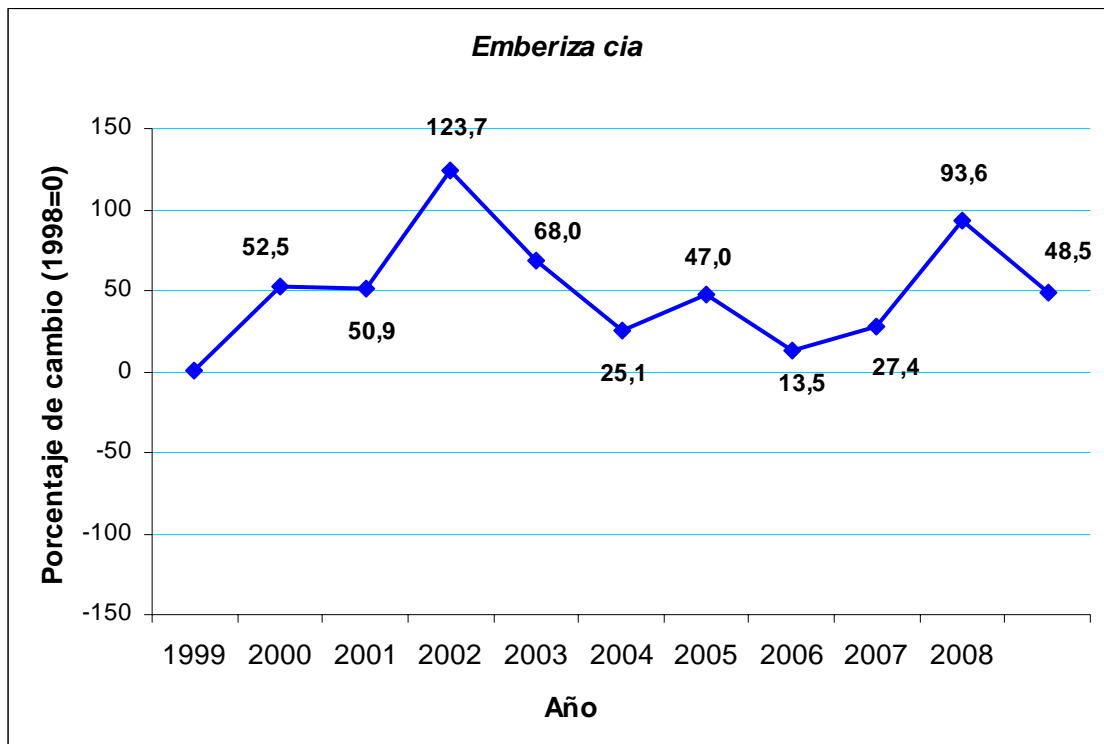
Pico picapinos



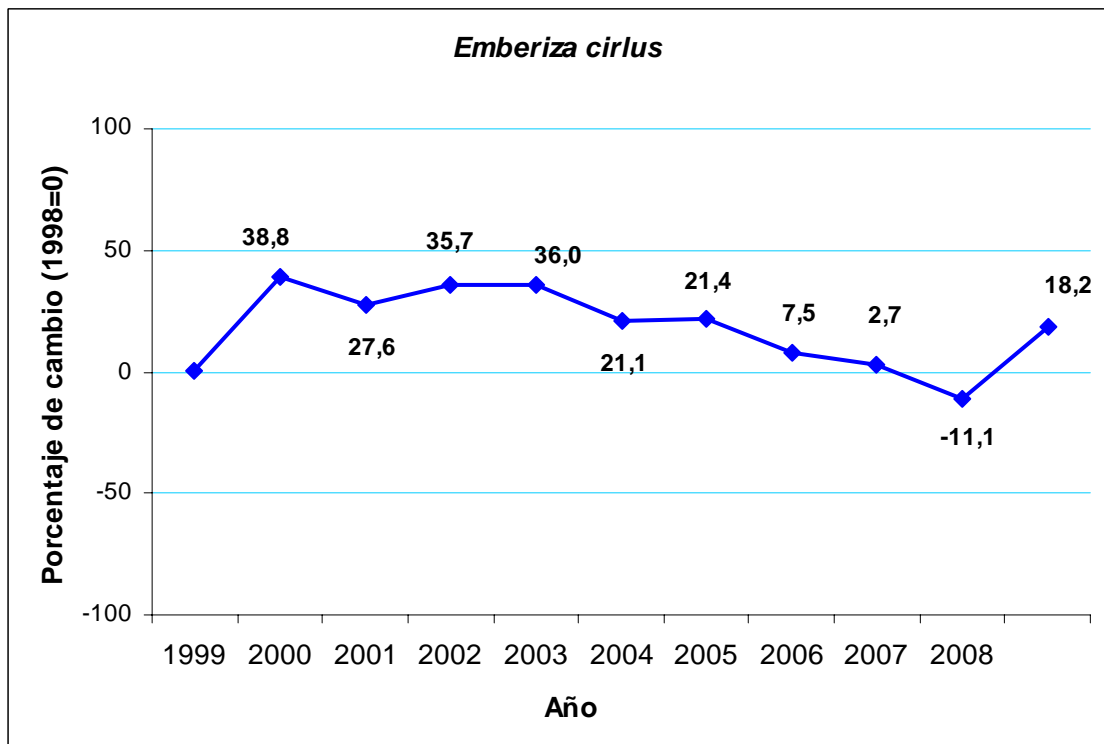
Triguero



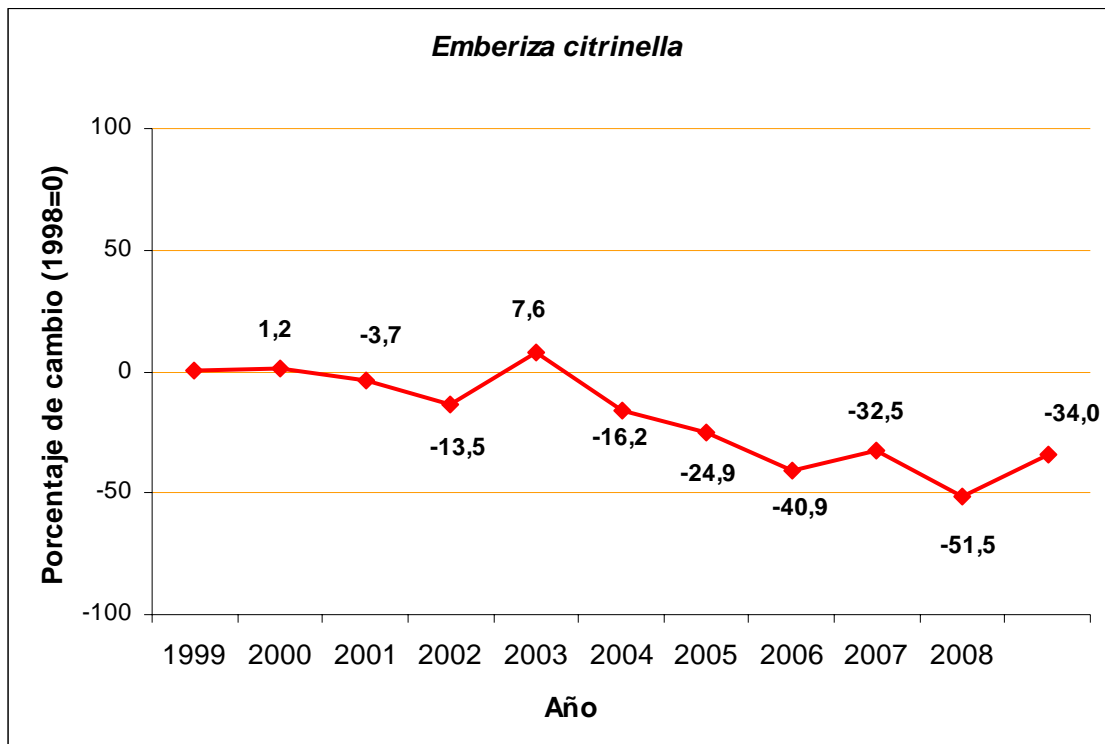
Escribano montesino



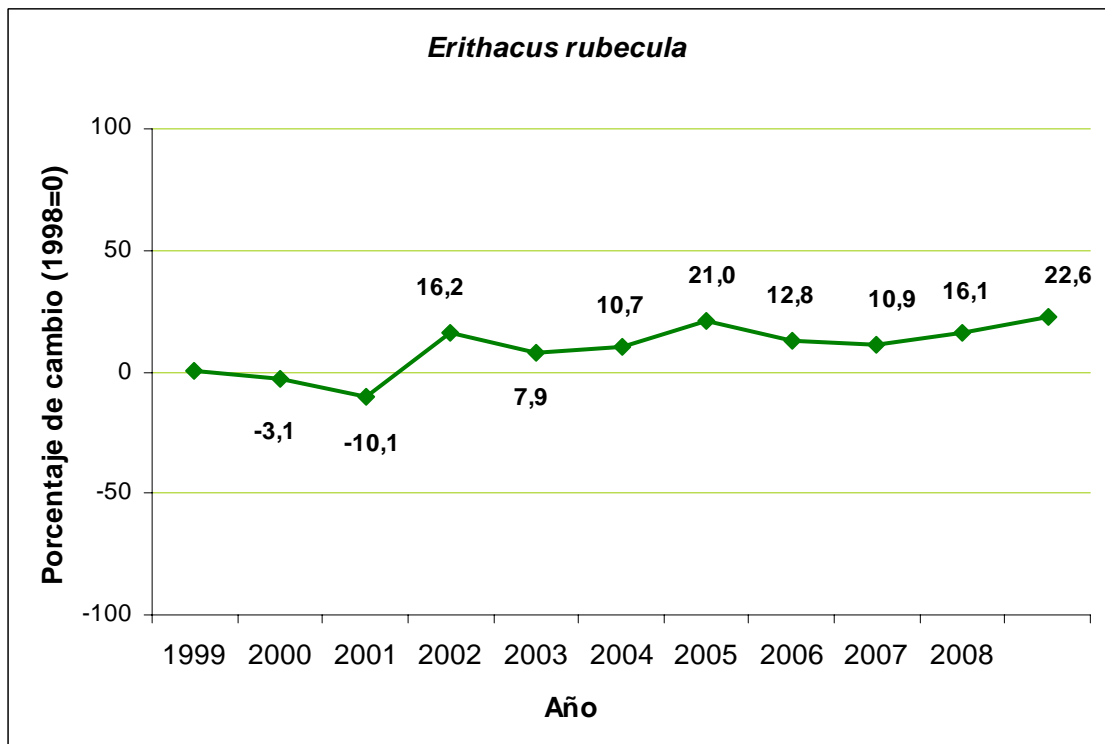
Escribano soteño



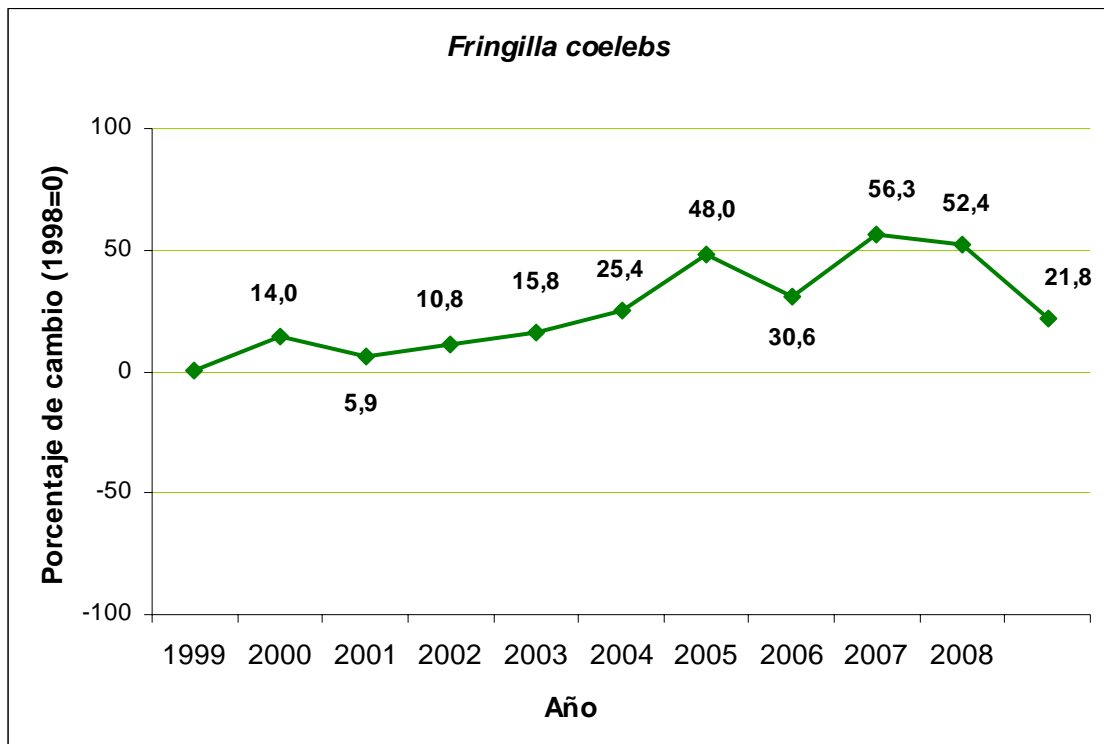
Escribano cerillo



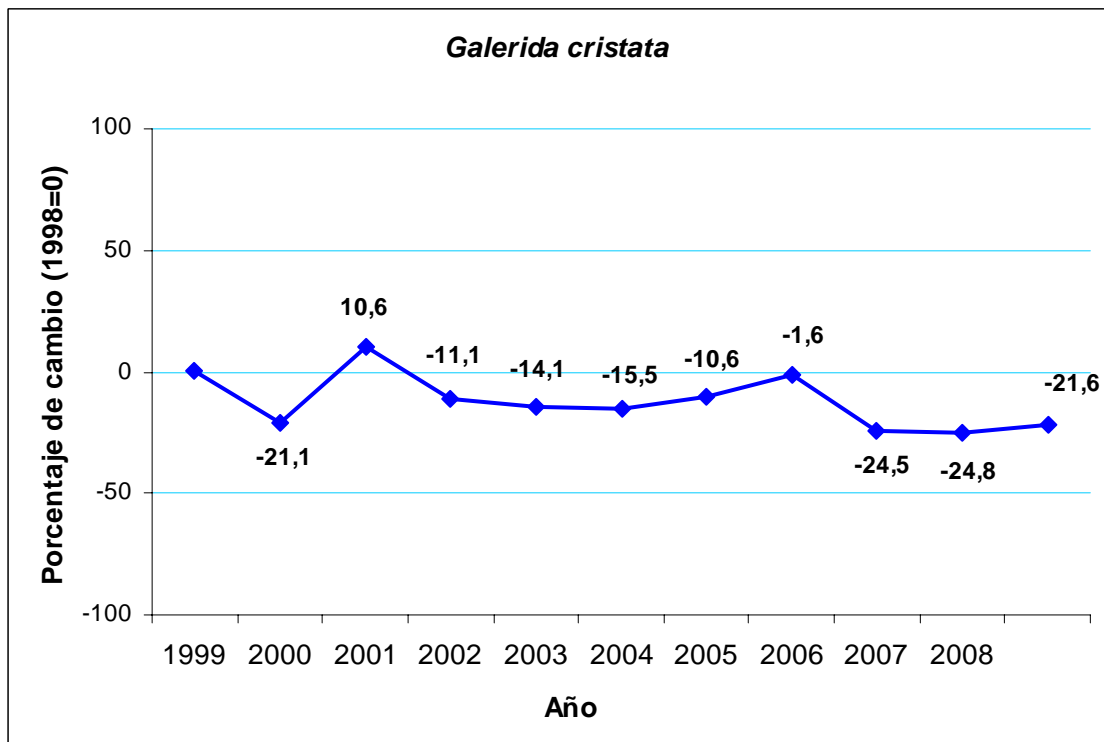
Petirrojo europeo



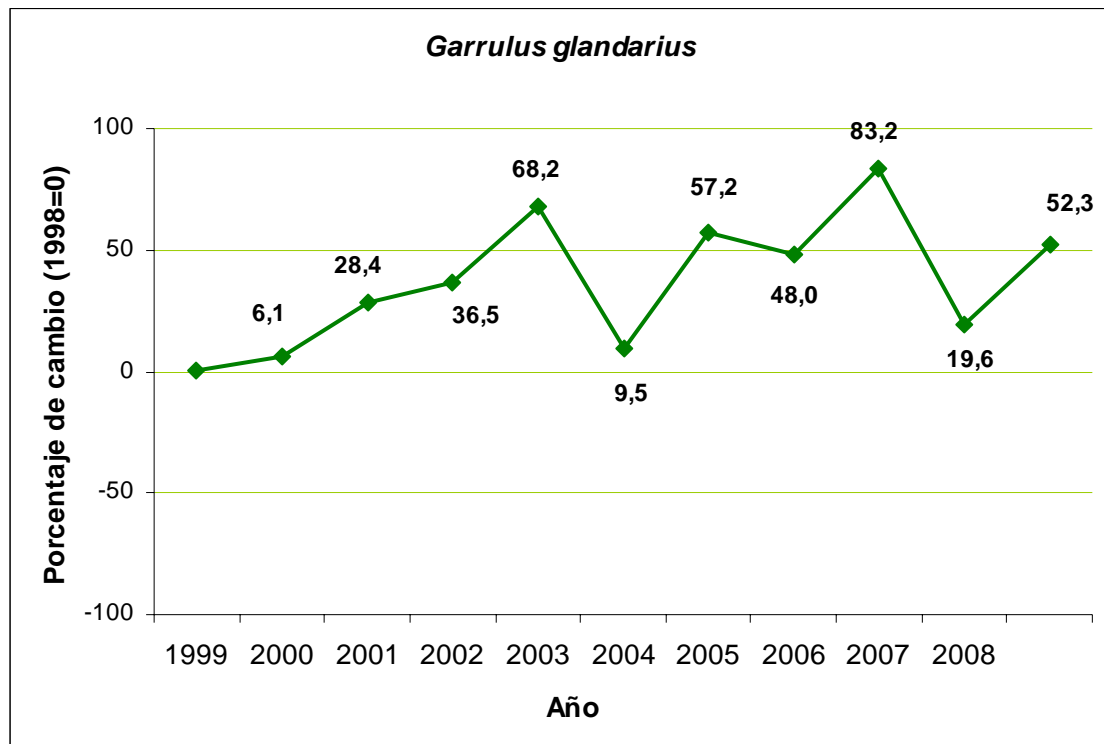
Pinzón vulgar



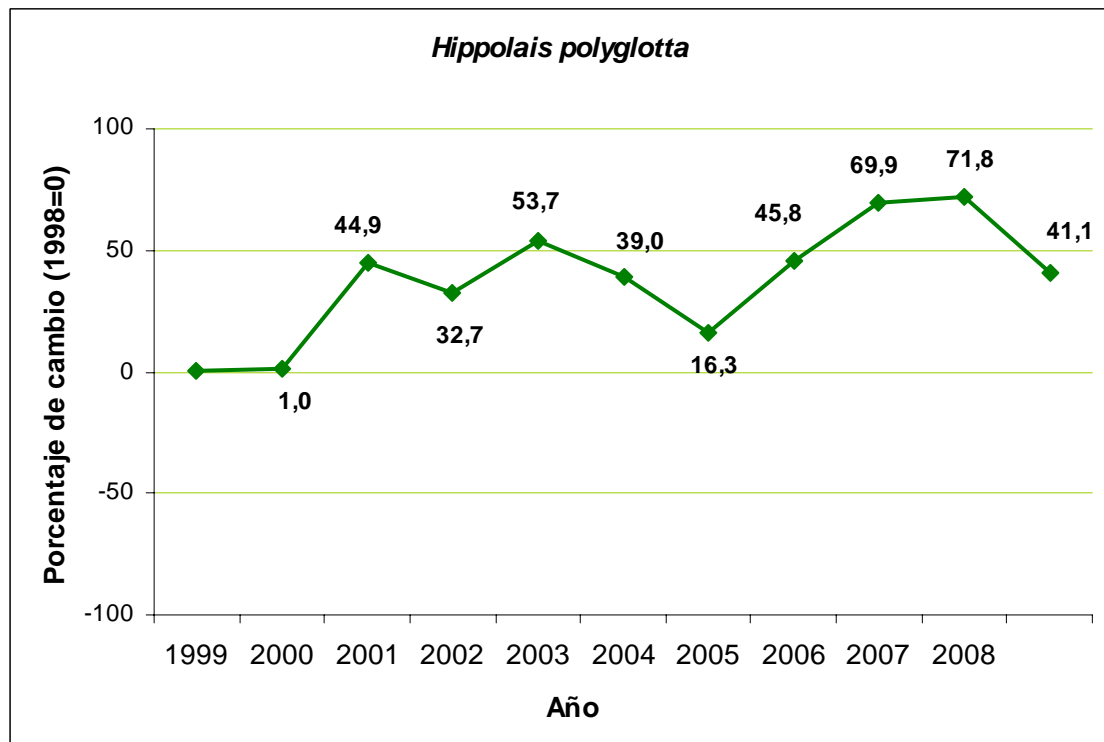
Cogujada común



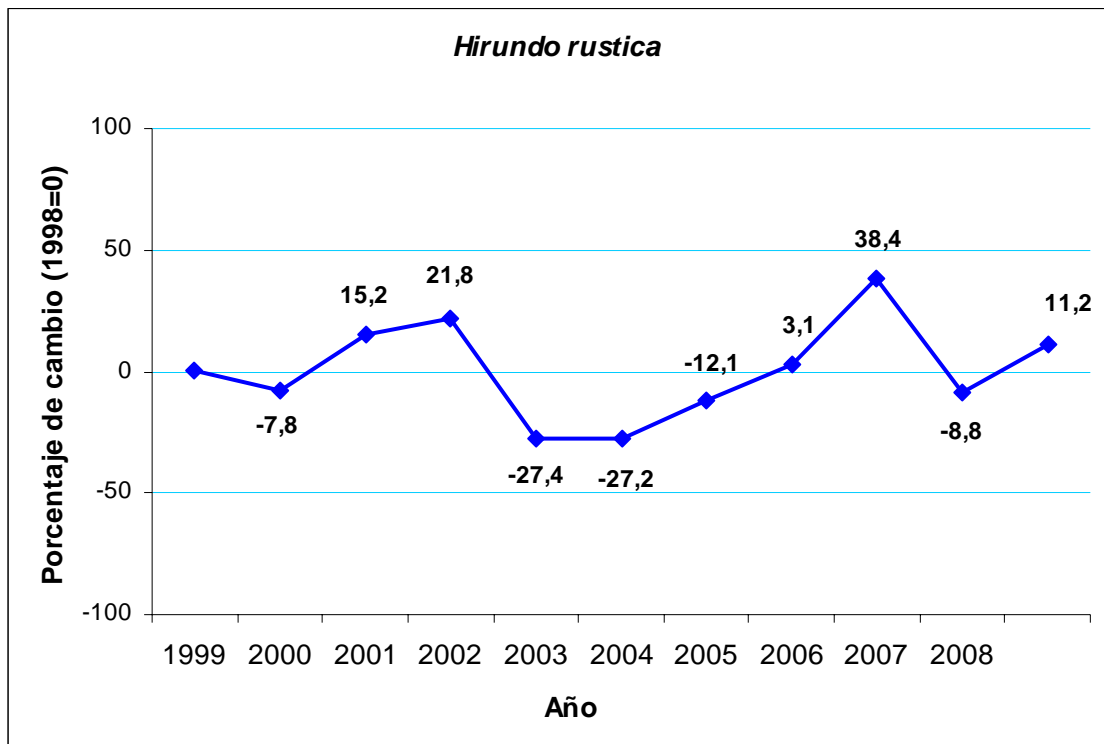
Arrendajo



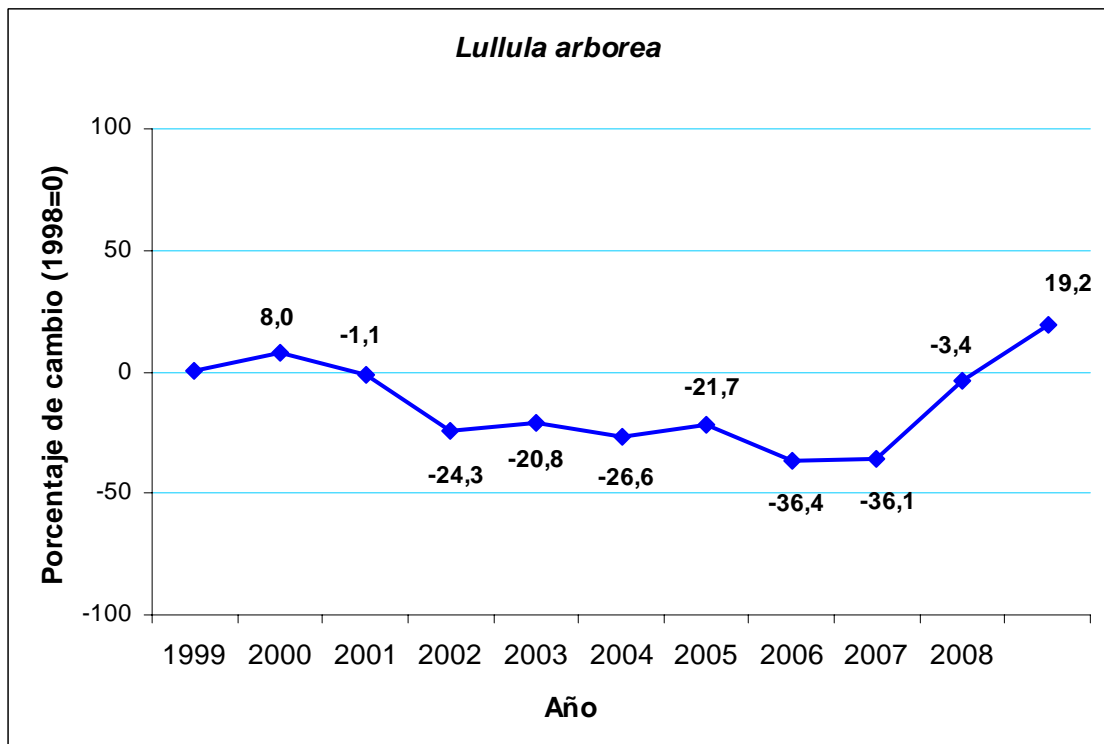
Zarcero común



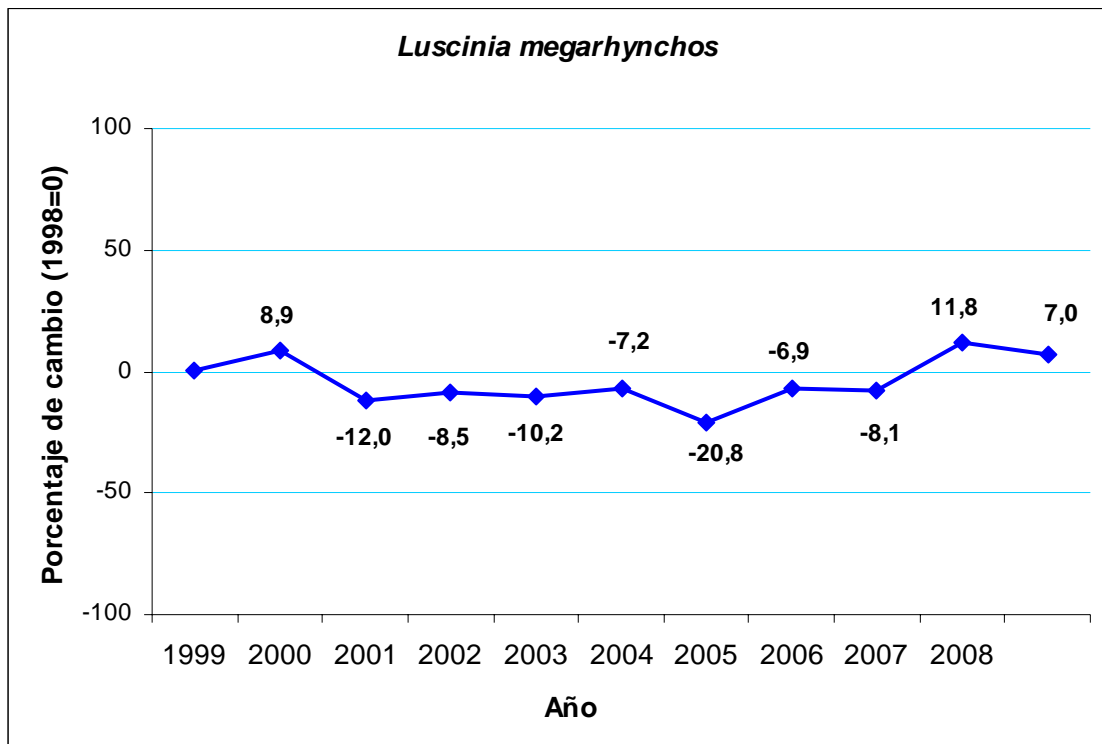
Golondrina común



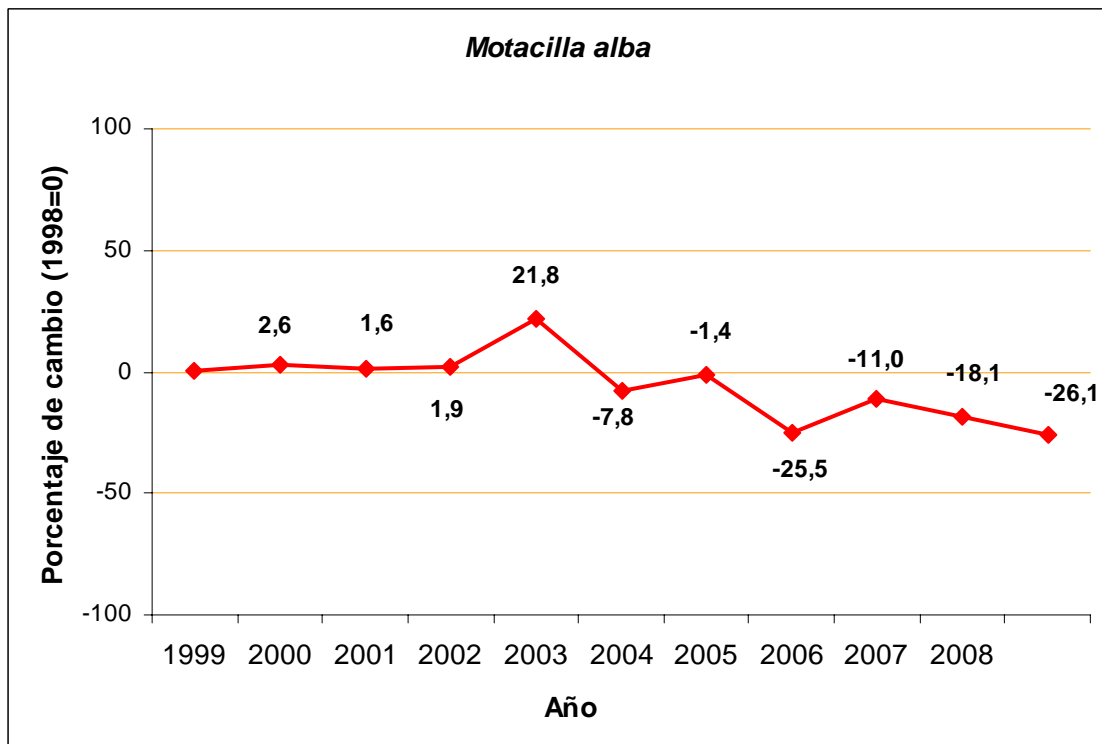
Totavía



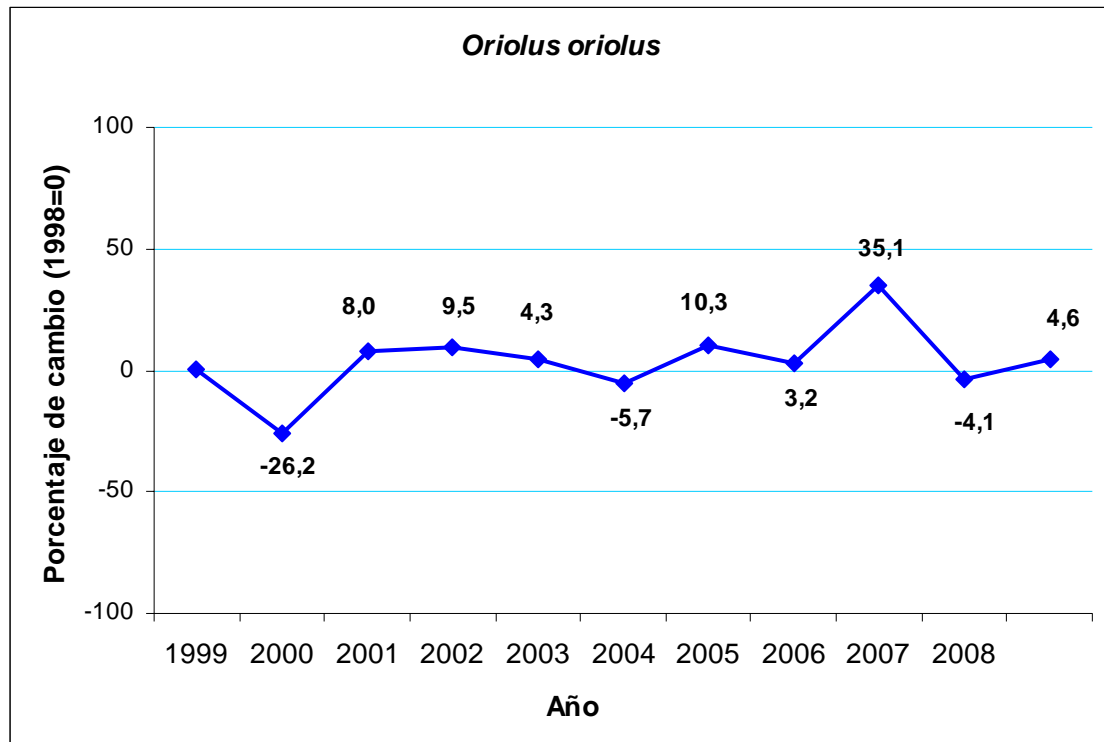
Ruiseñor común



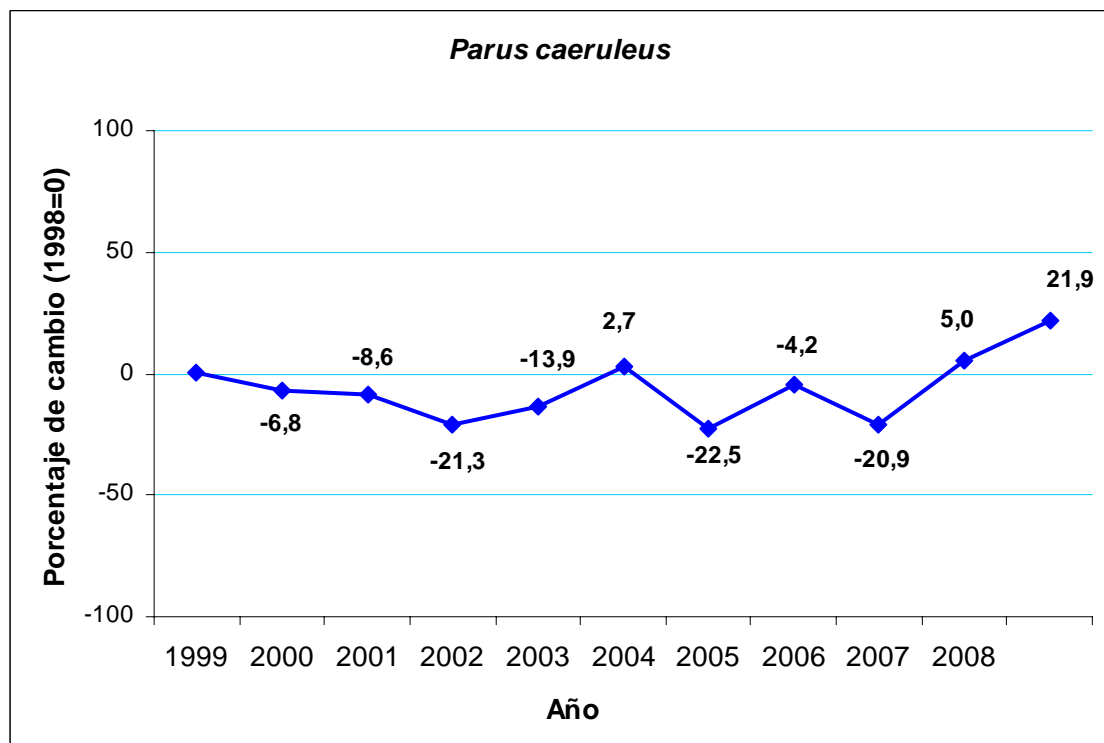
Lavandera blanca



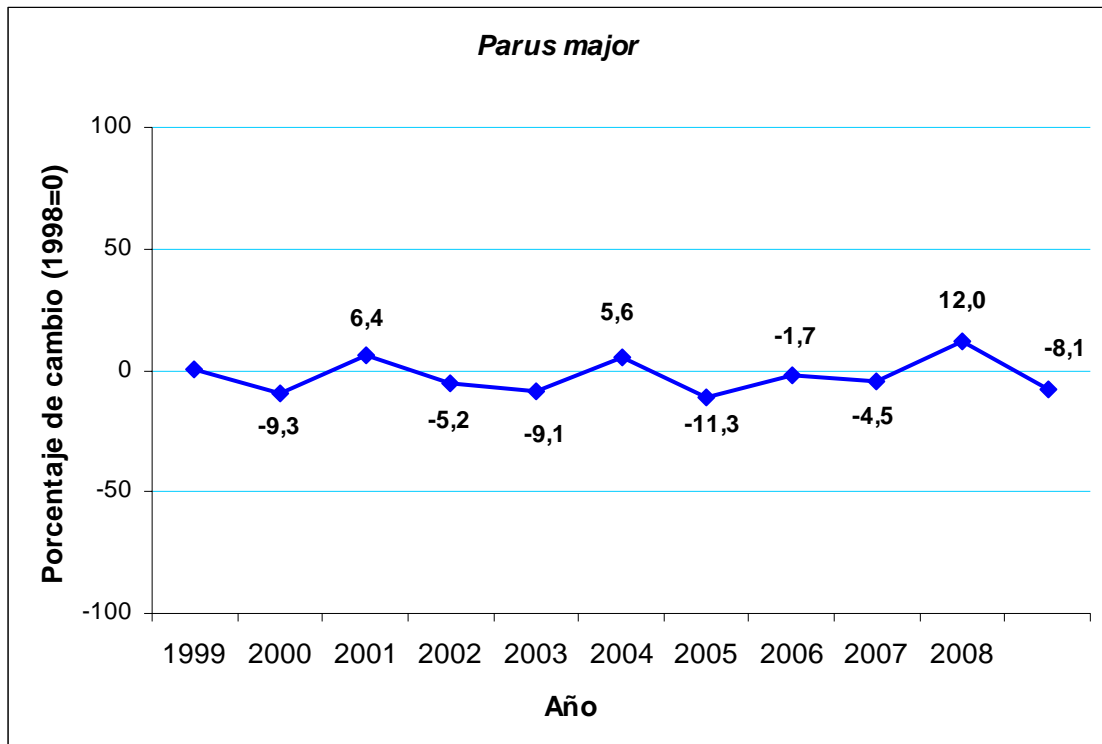
Oropéndola



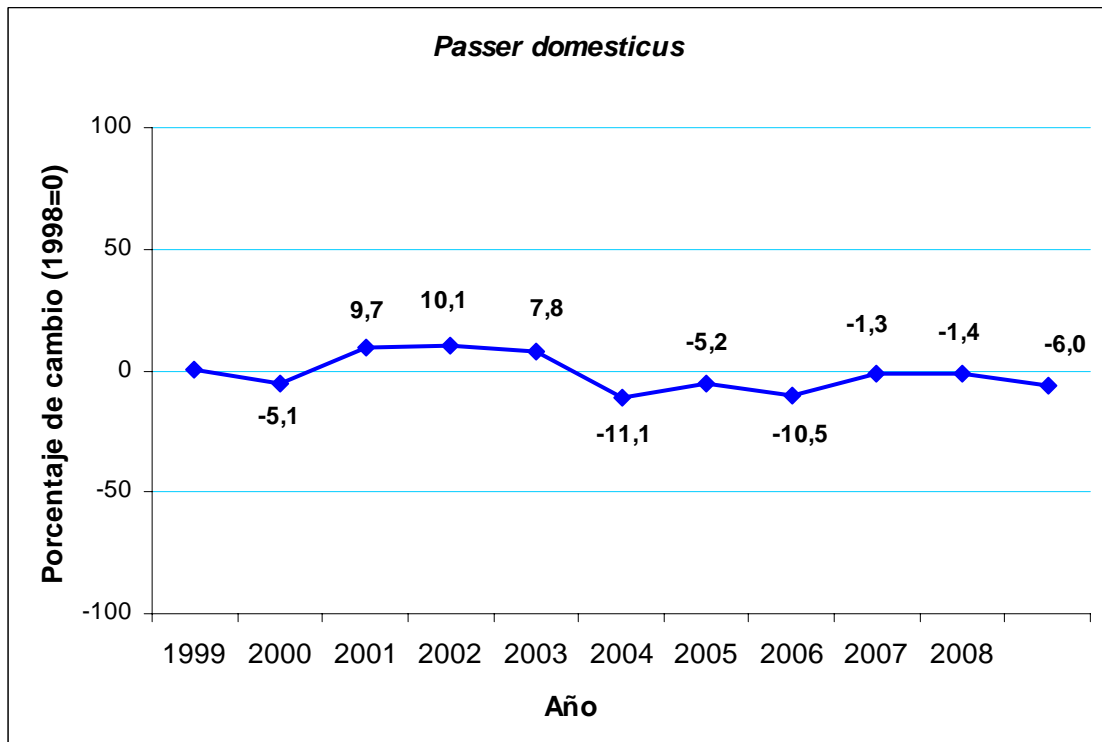
Herrerillo común



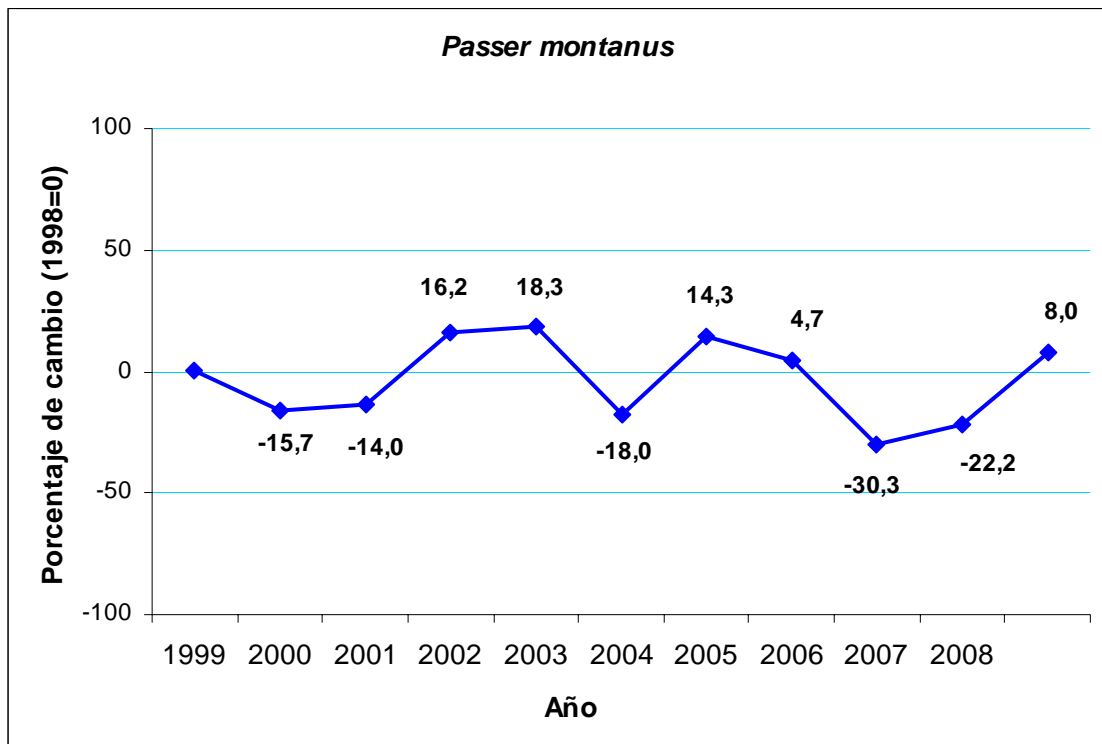
Carbonero común



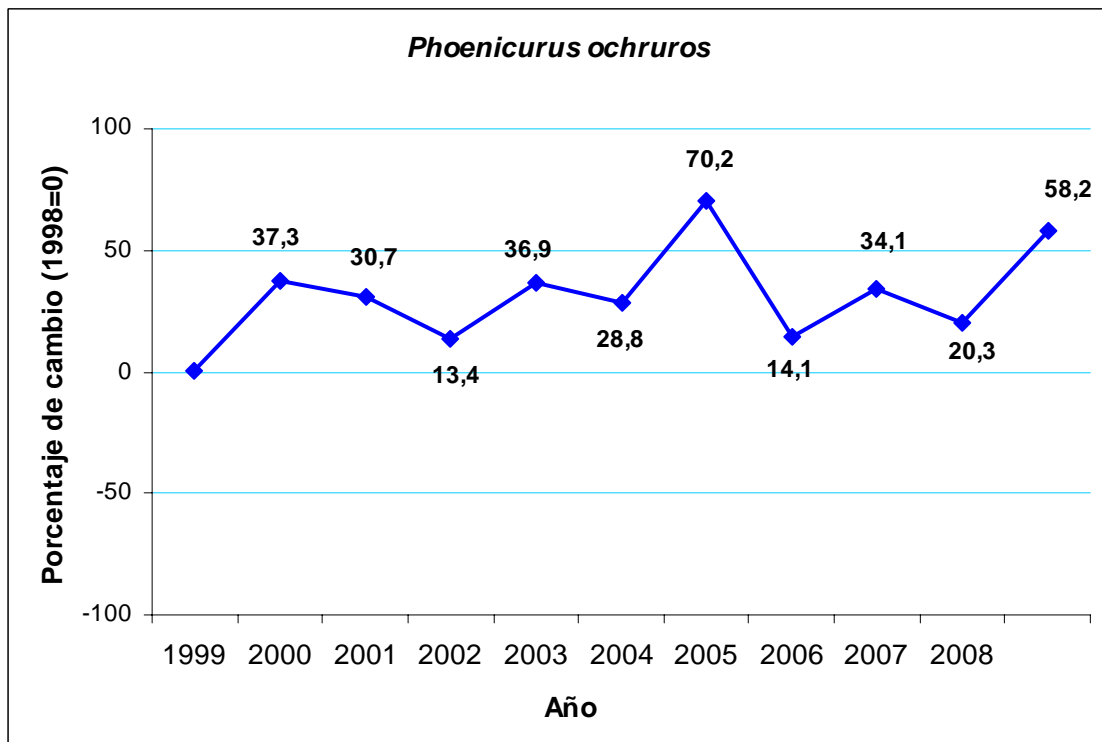
Gorrión común



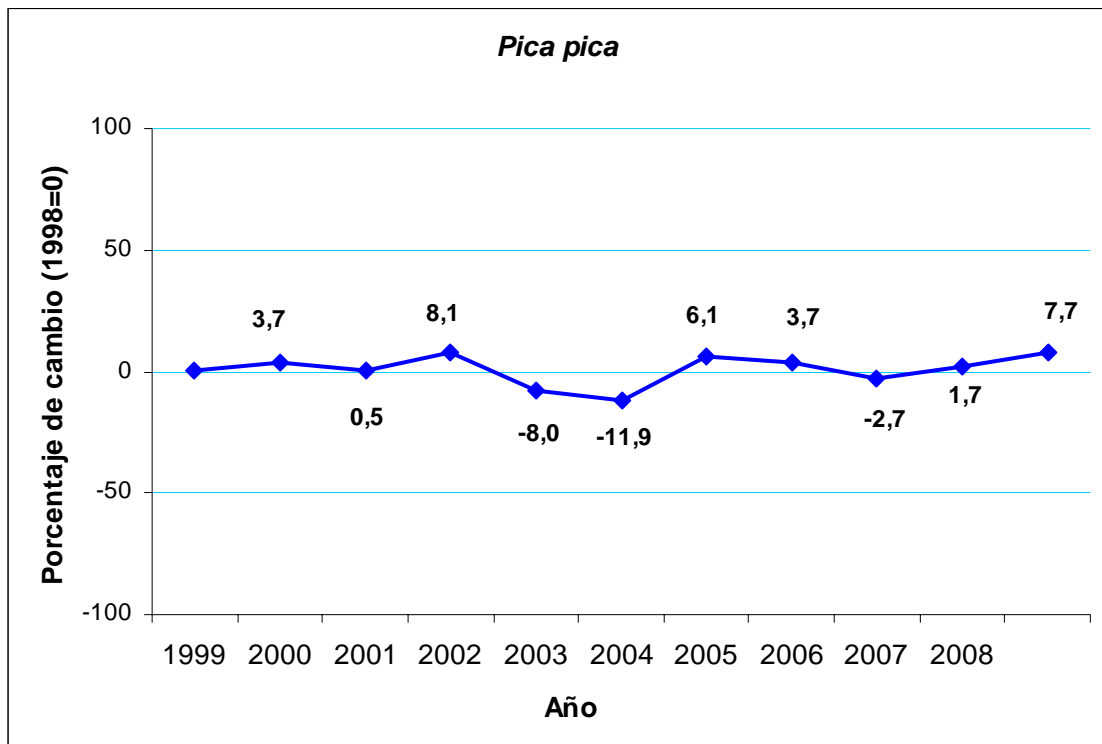
Gorrión molinero



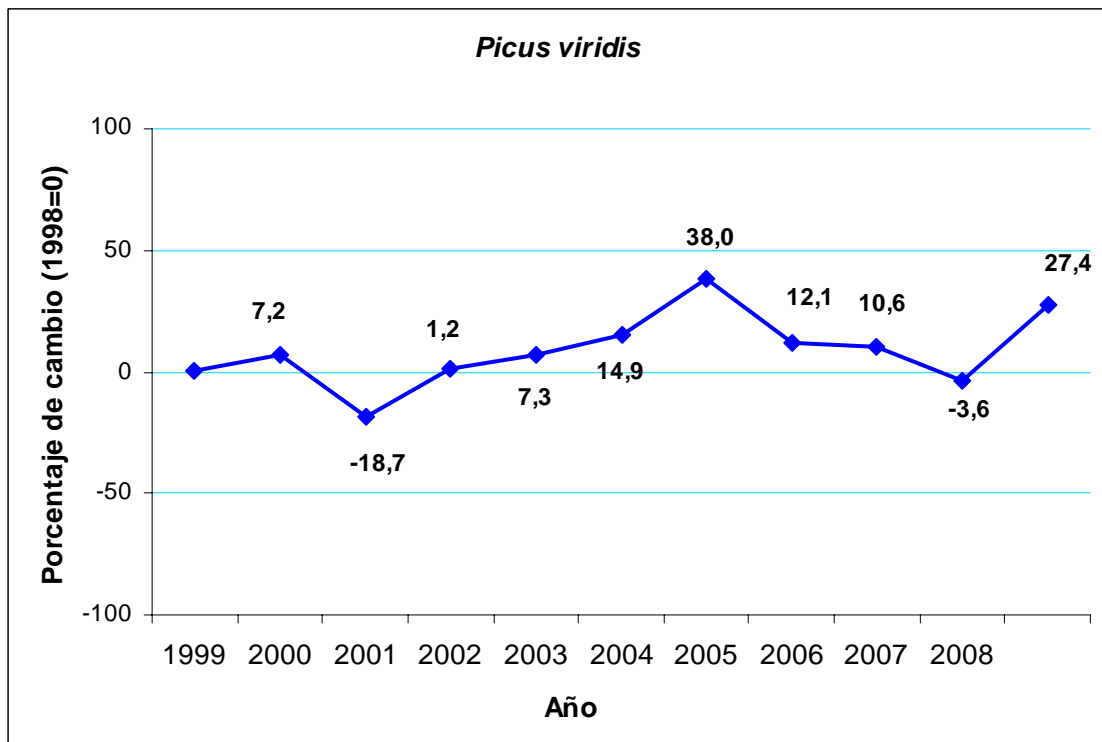
Colirrojo tizón



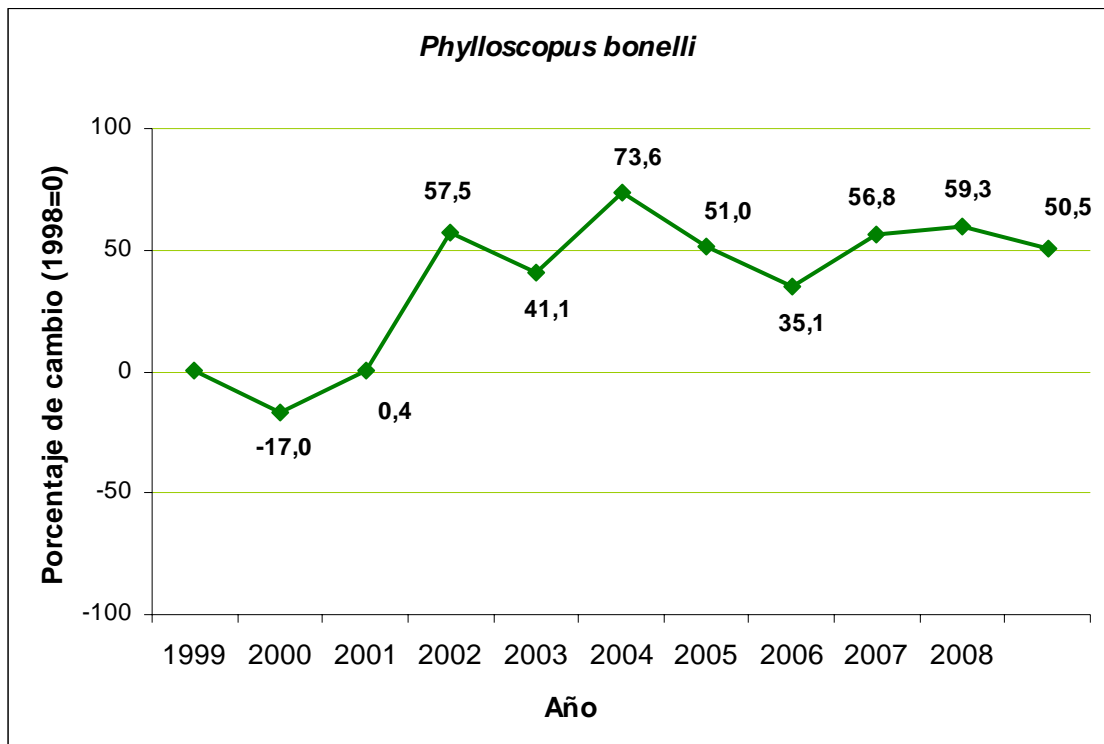
Urraca



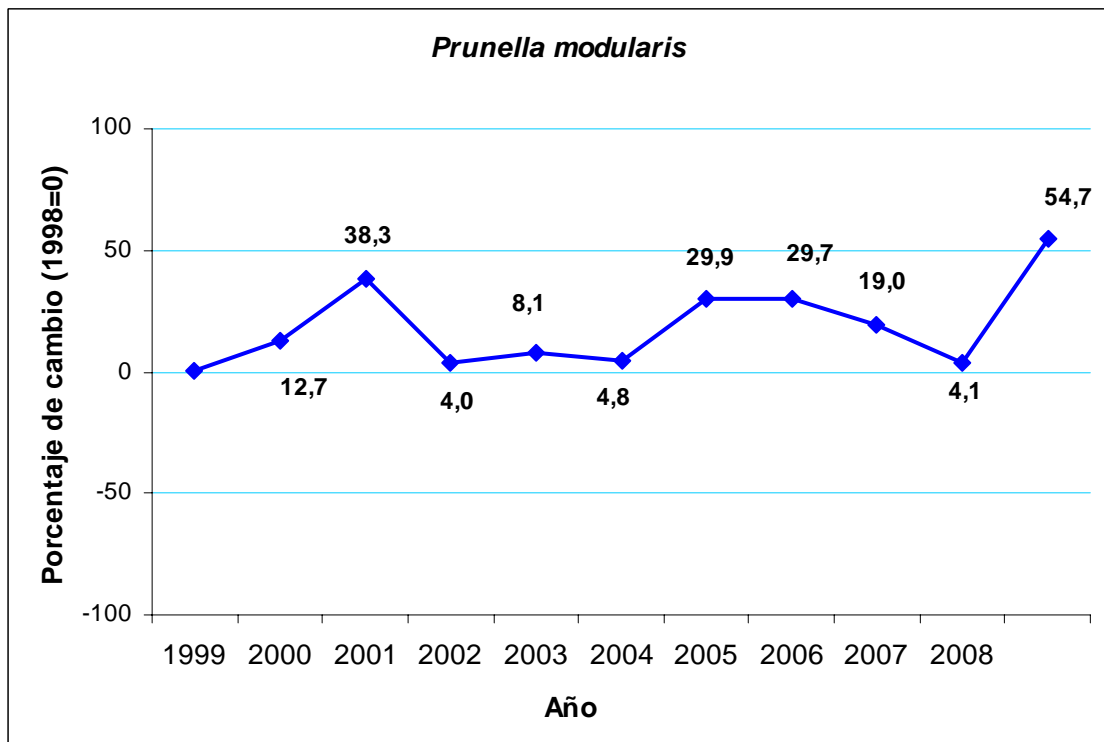
Pito real



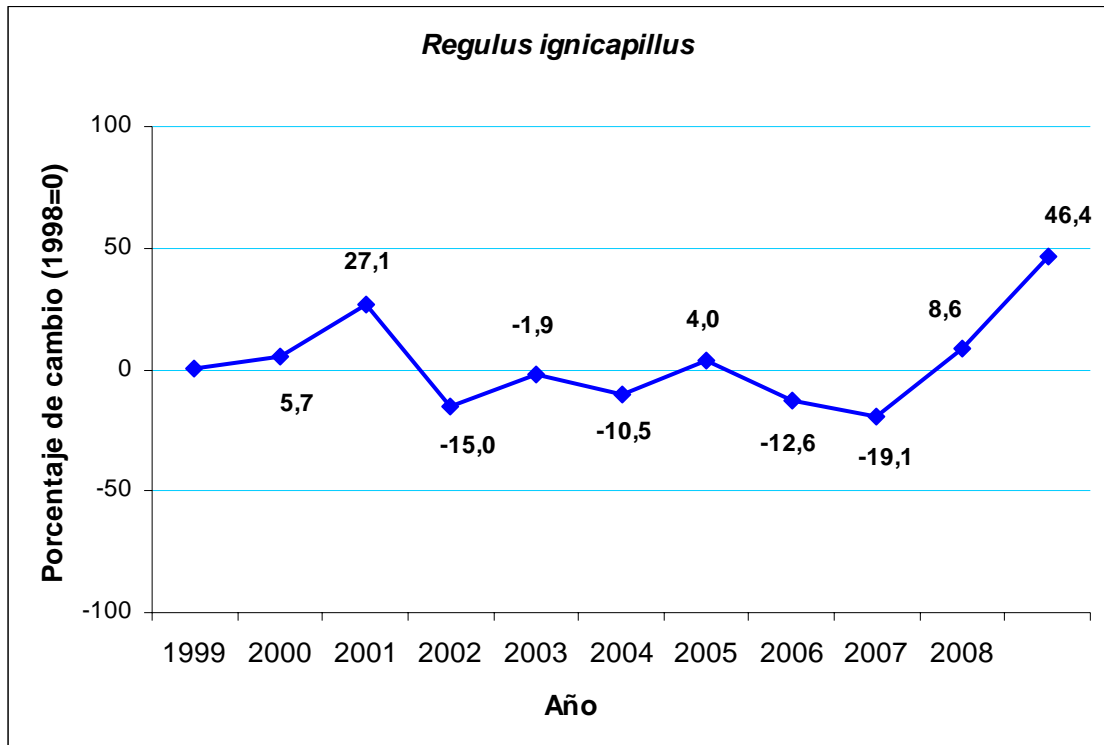
Mosquitero papialbo



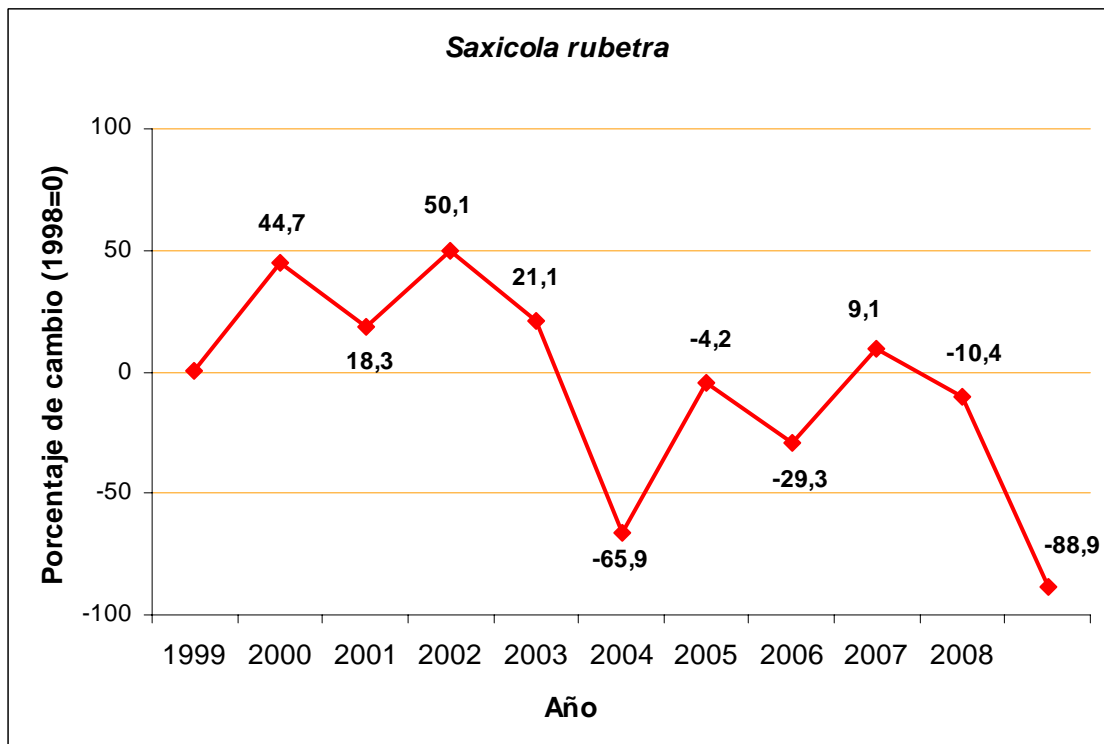
Acentor común



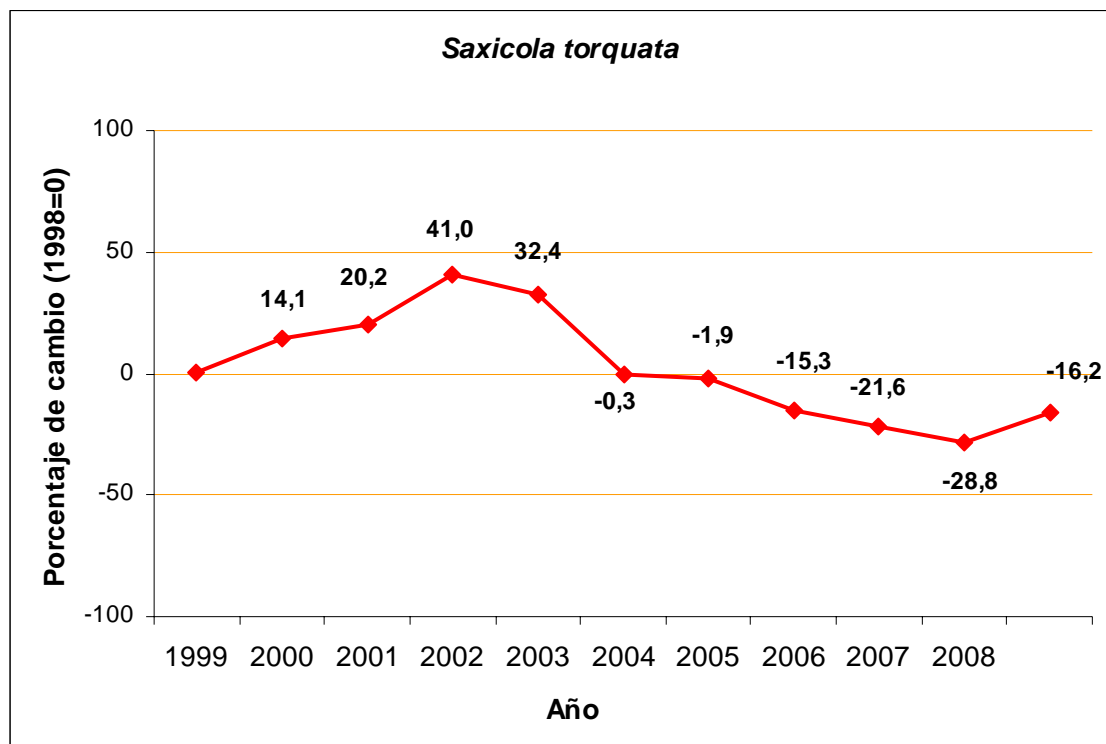
Reyezuelo listado



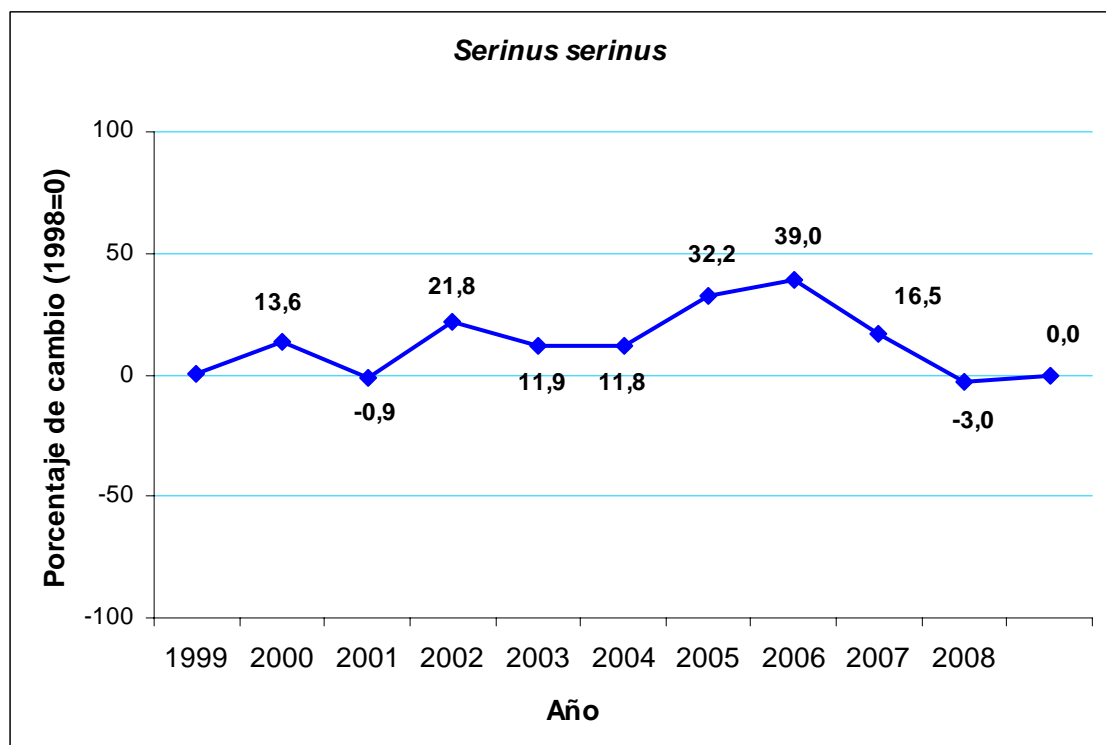
Tarabilla norteña



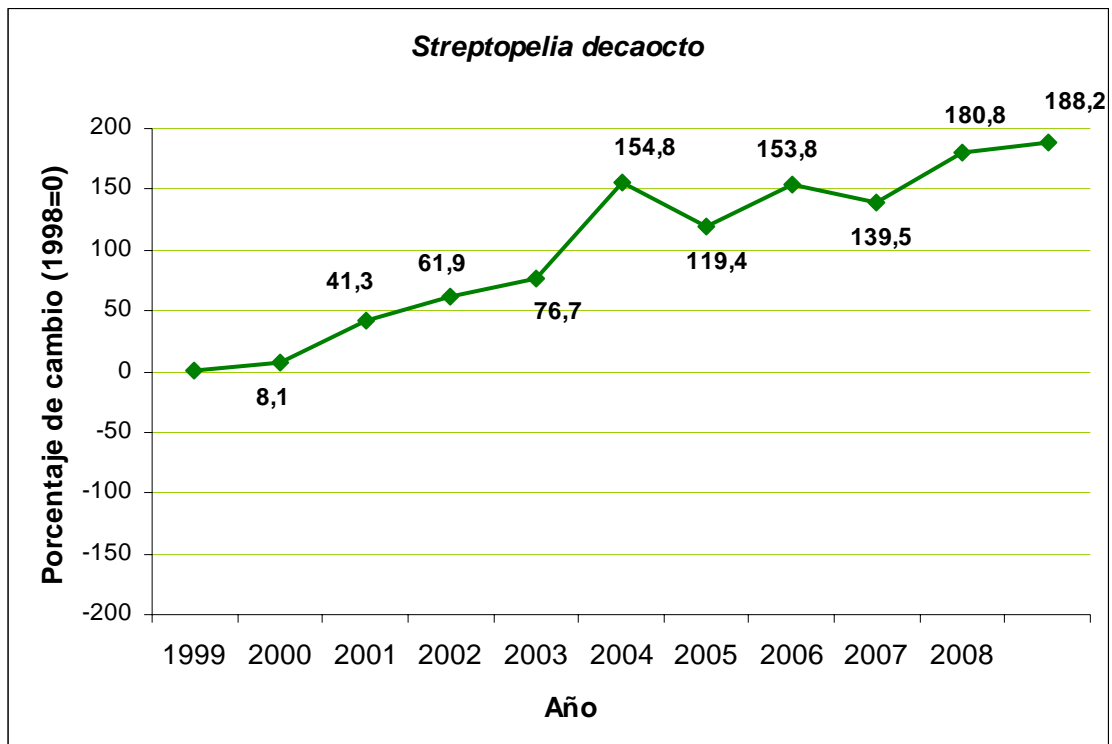
Tarabilla común



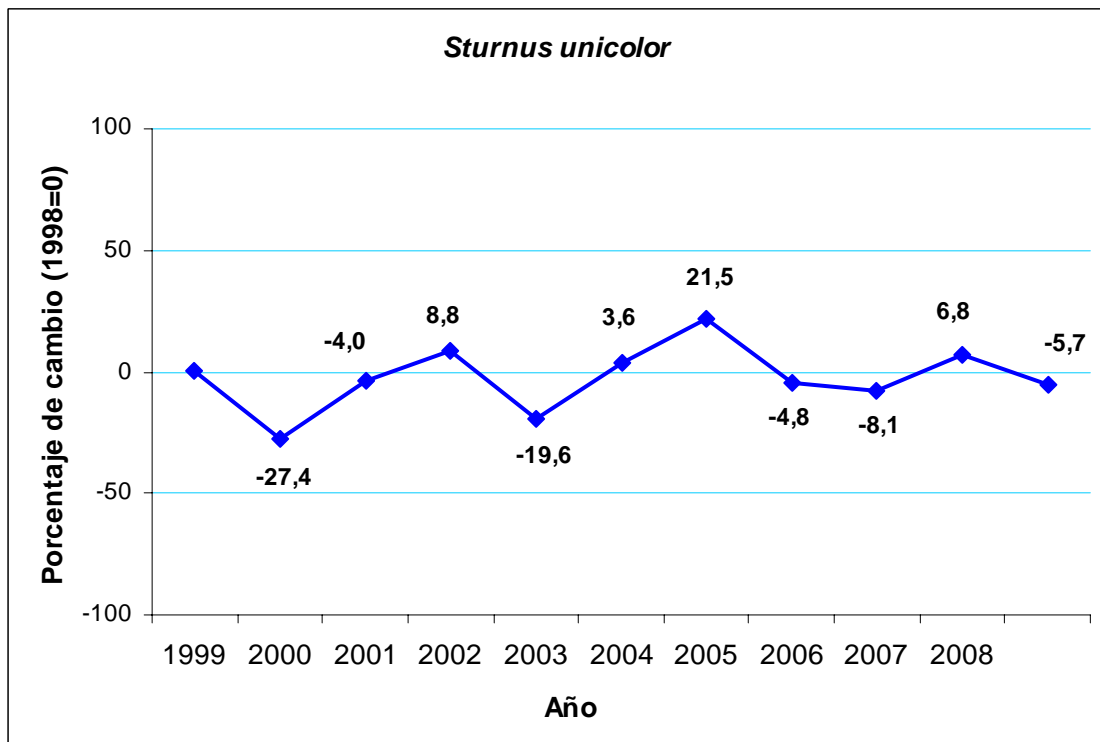
Verdecillo



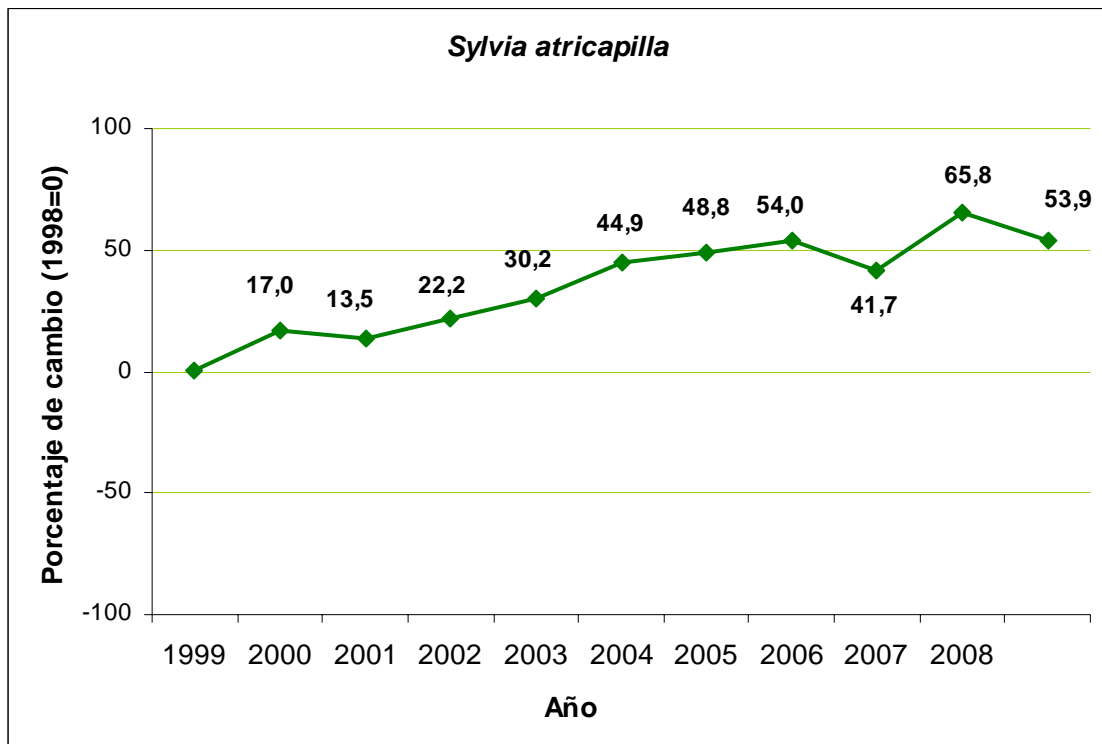
Tórtola turca



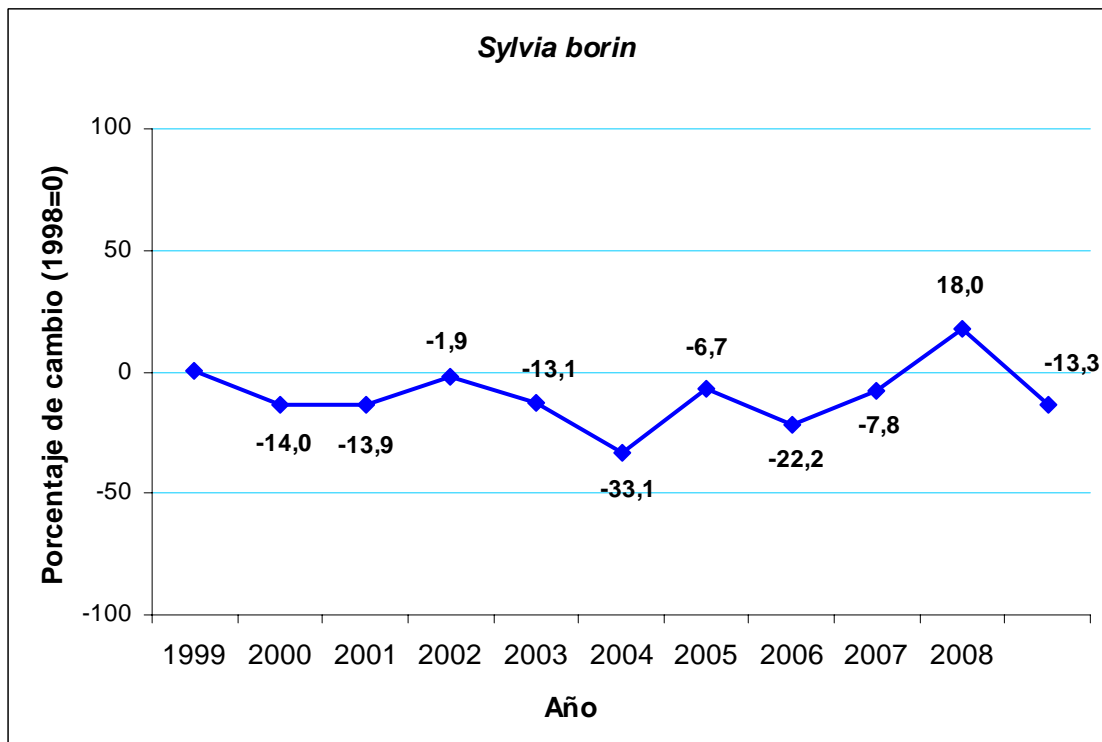
Estornino negro



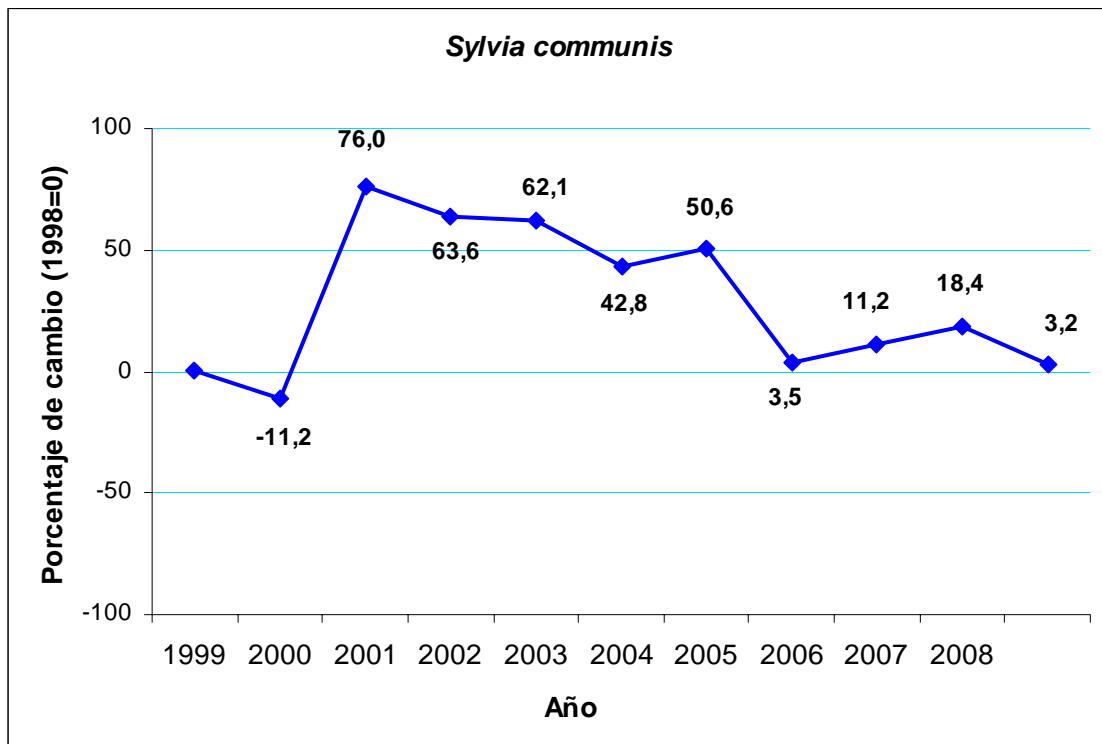
Curruca capirotada



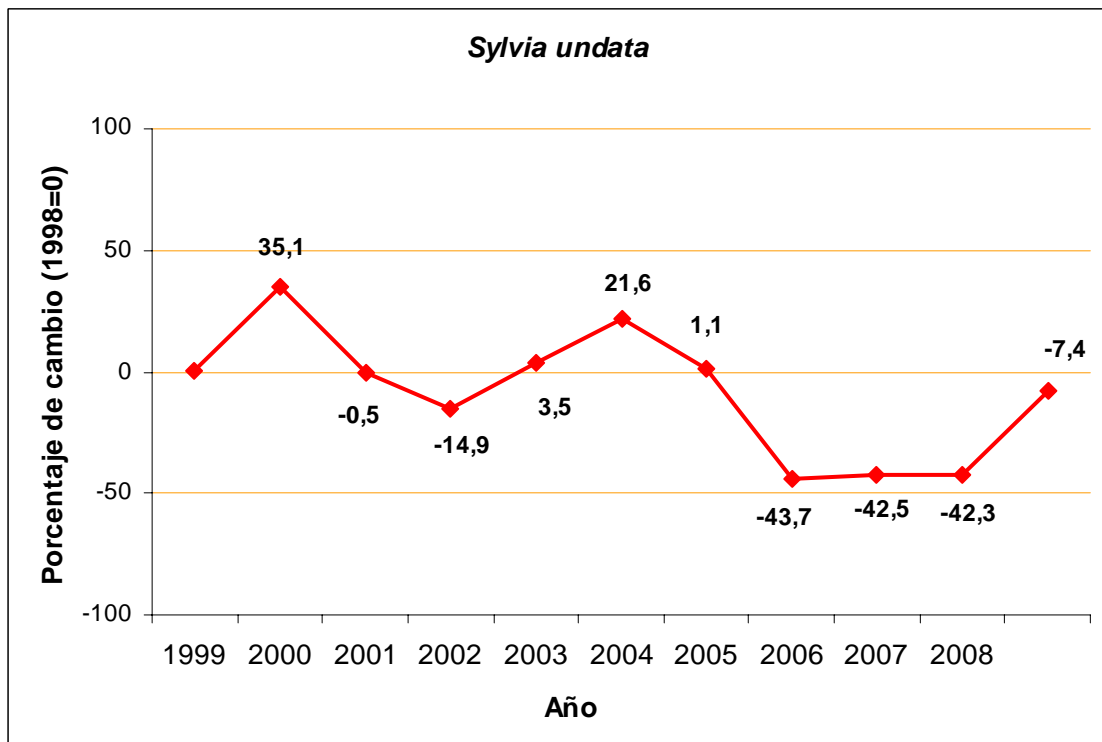
Curruca mosquitera



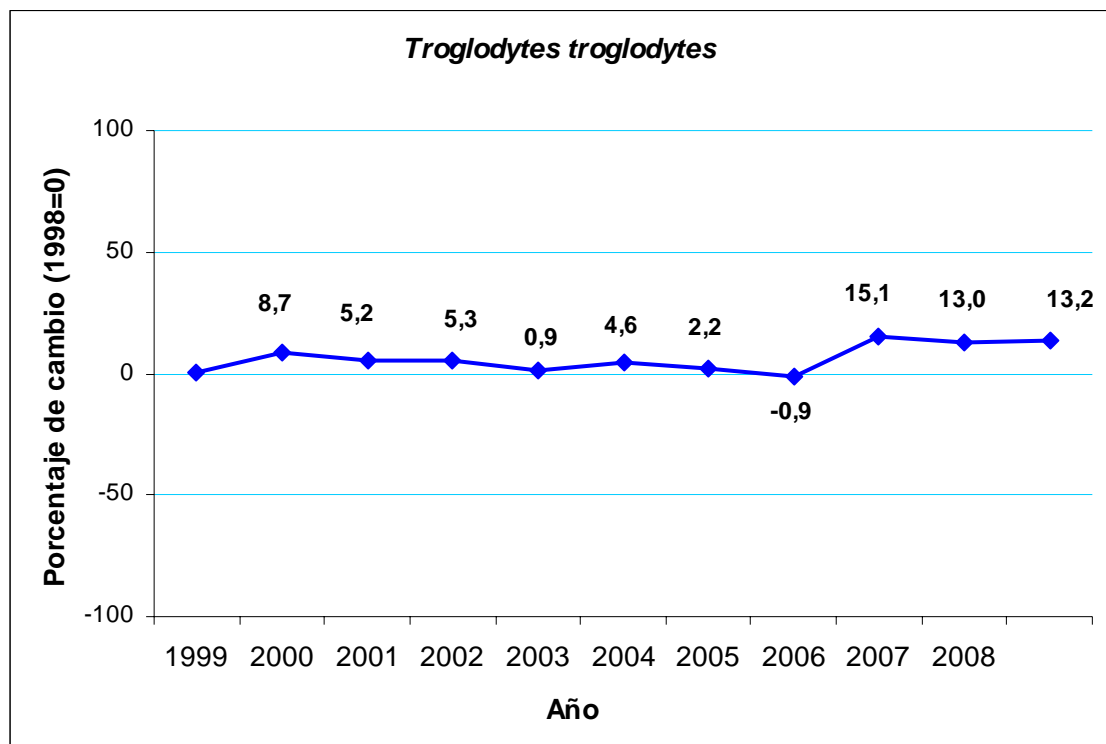
Curruca zarcera



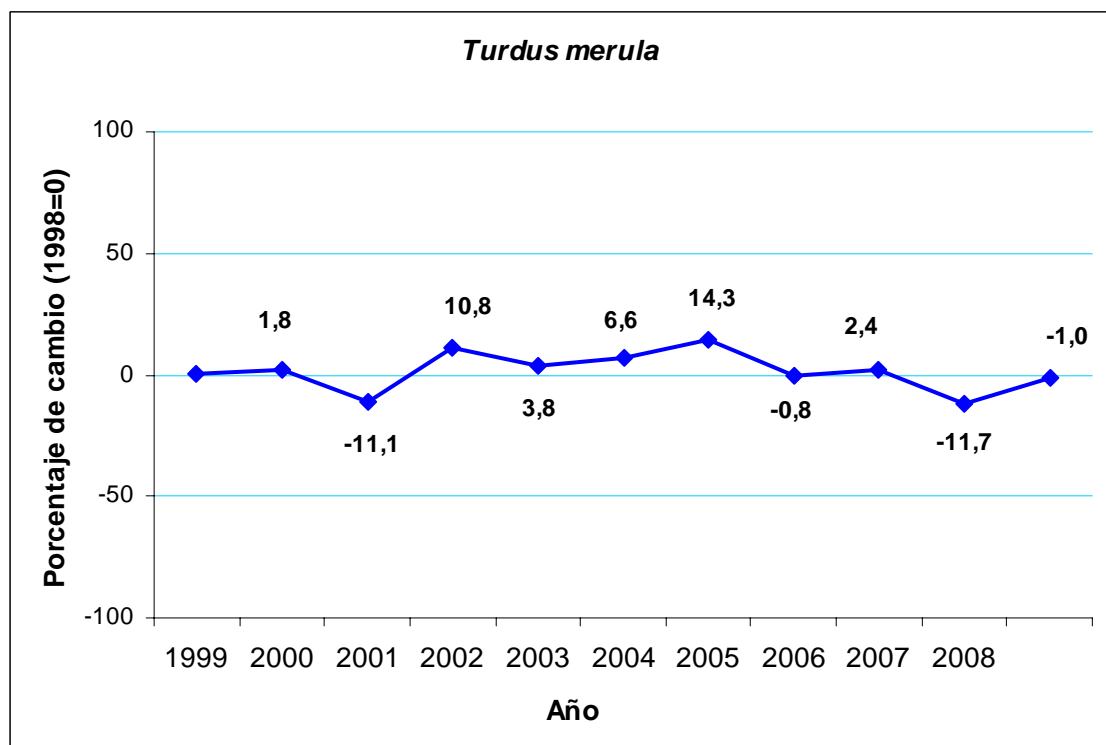
Curruca rabilarga



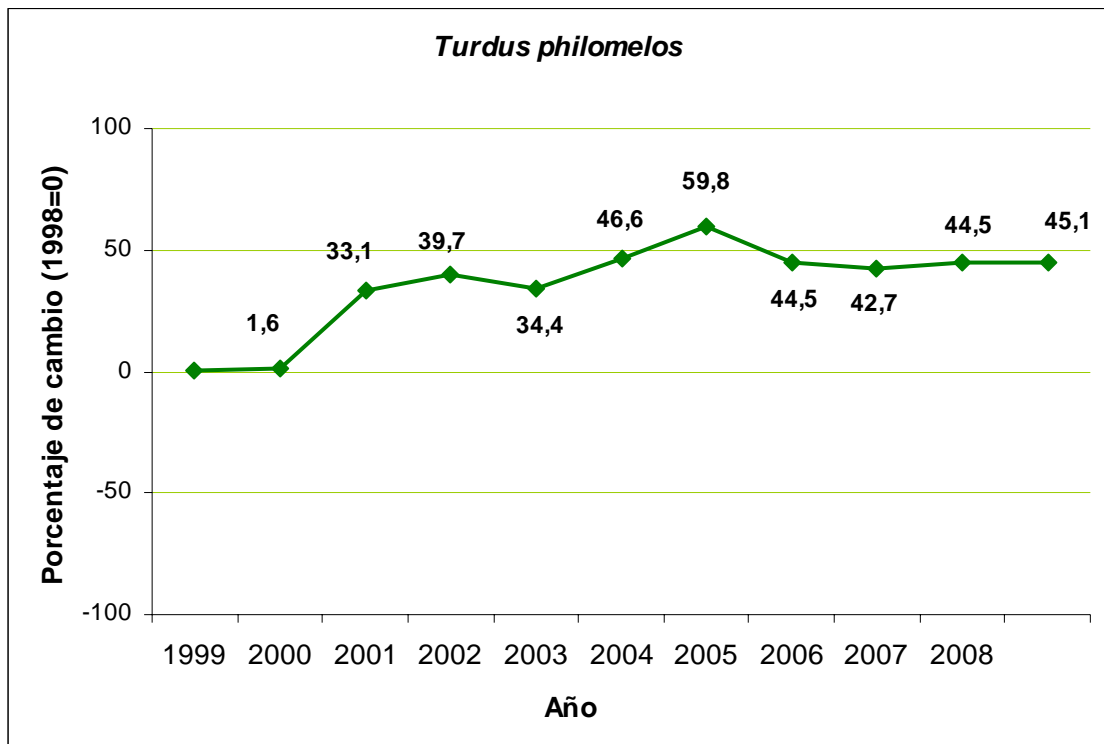
Chochín común



Mirlo común



Zorzal común



Abubilla

