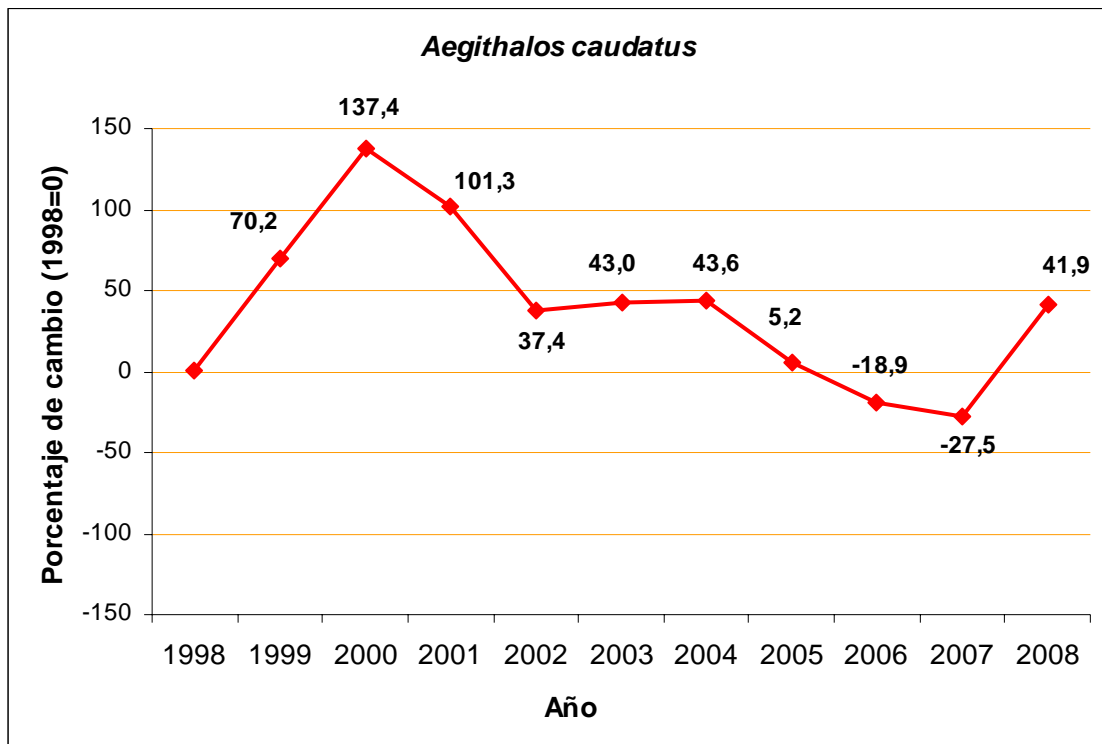
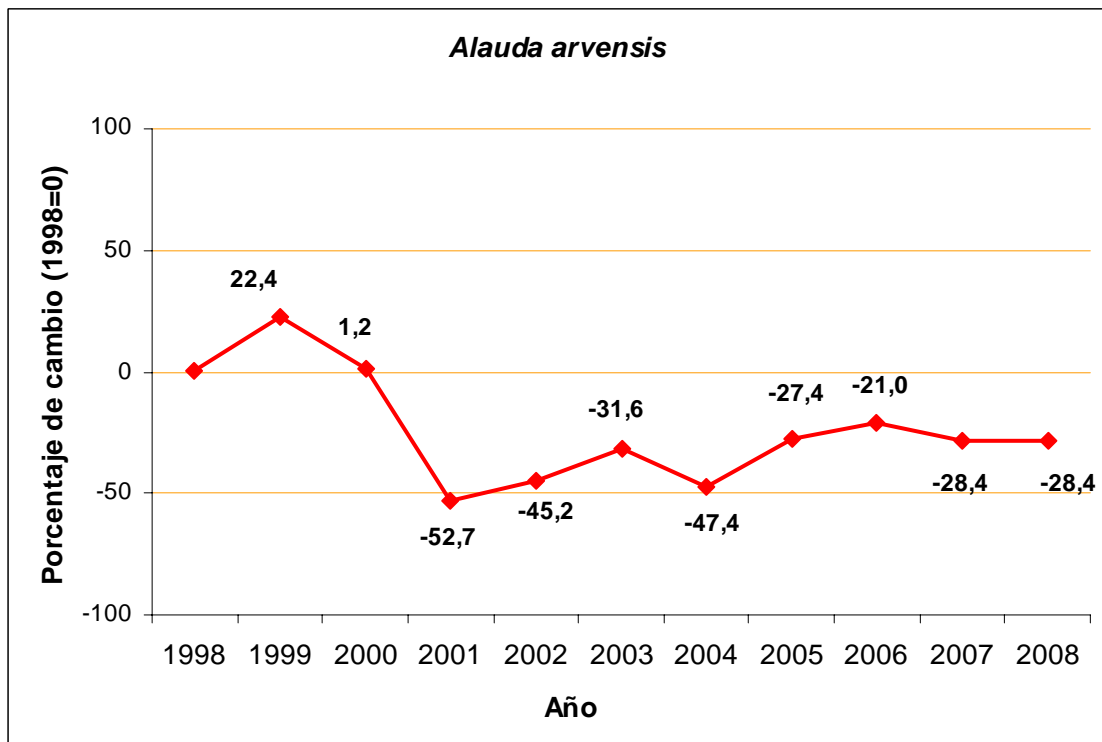


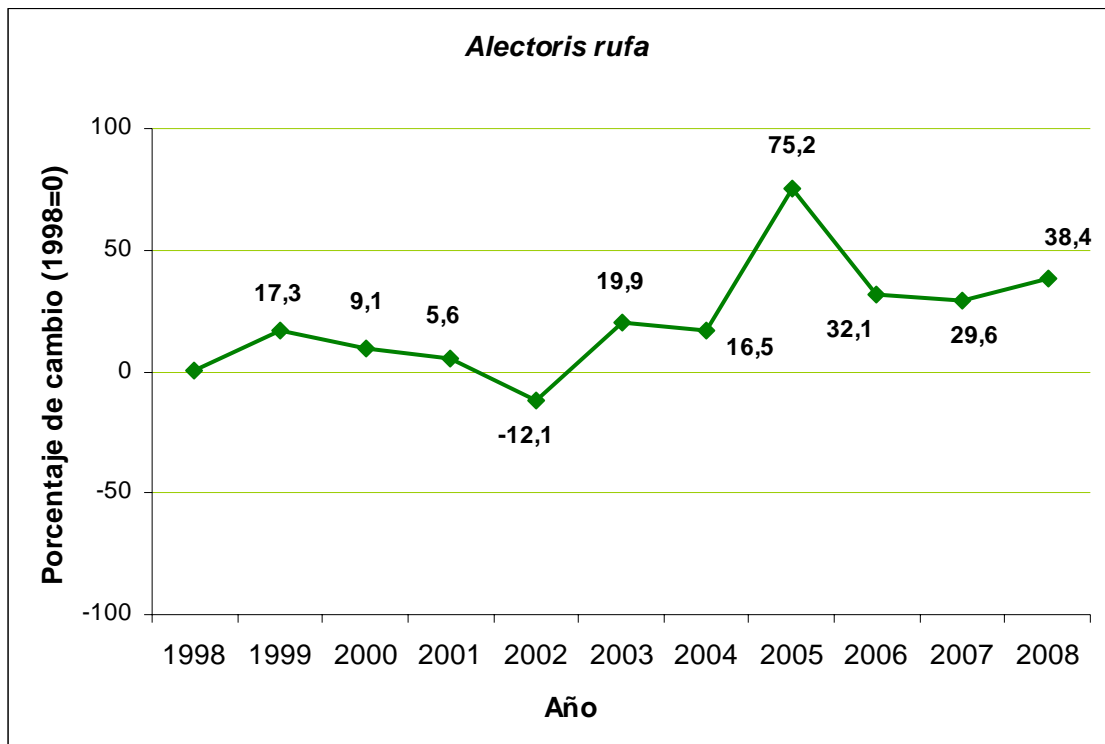
Mito



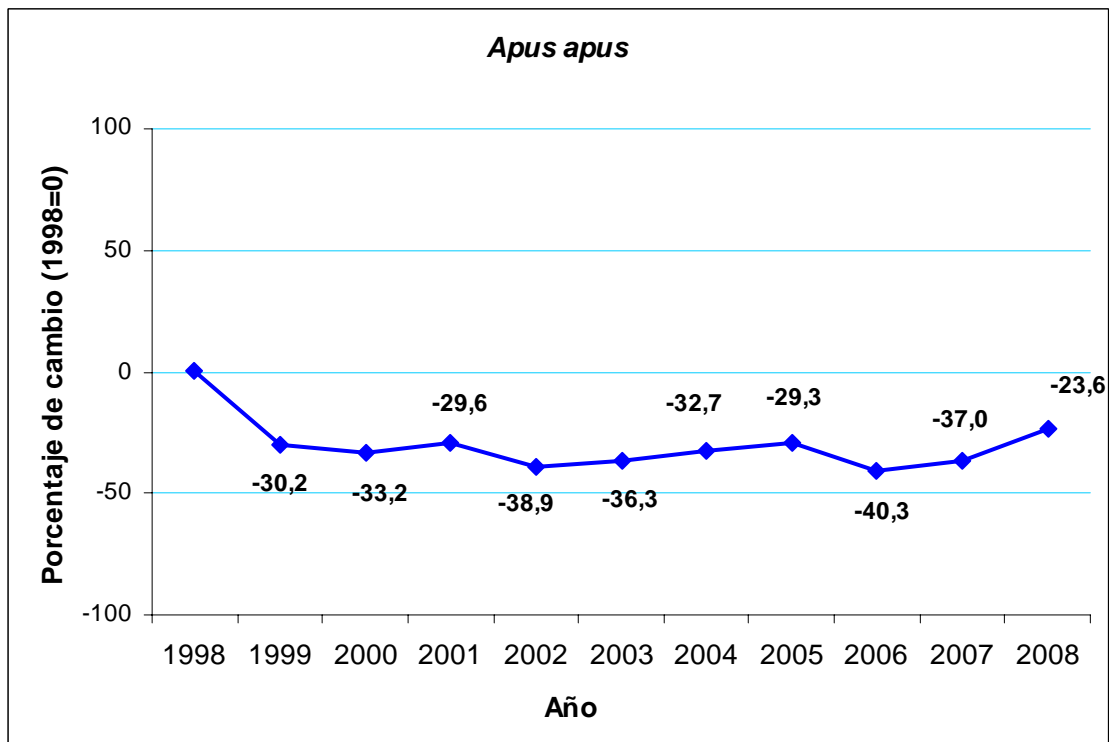
Alondra común



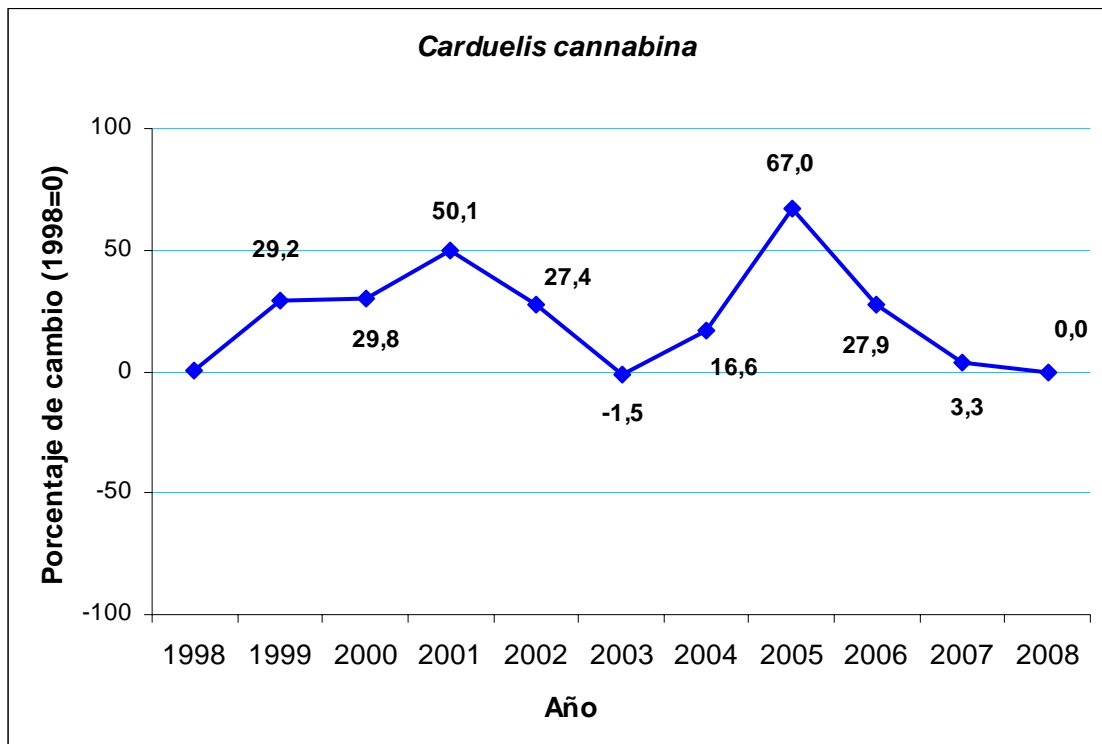
Perdiz común



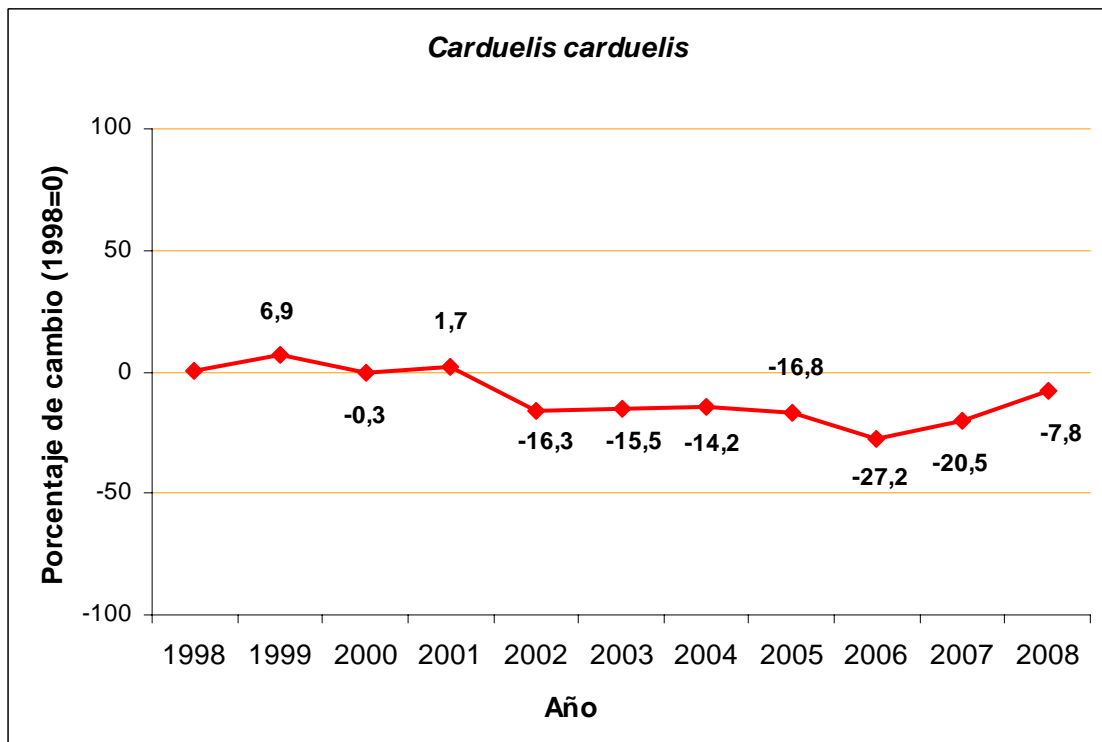
Vencejo común



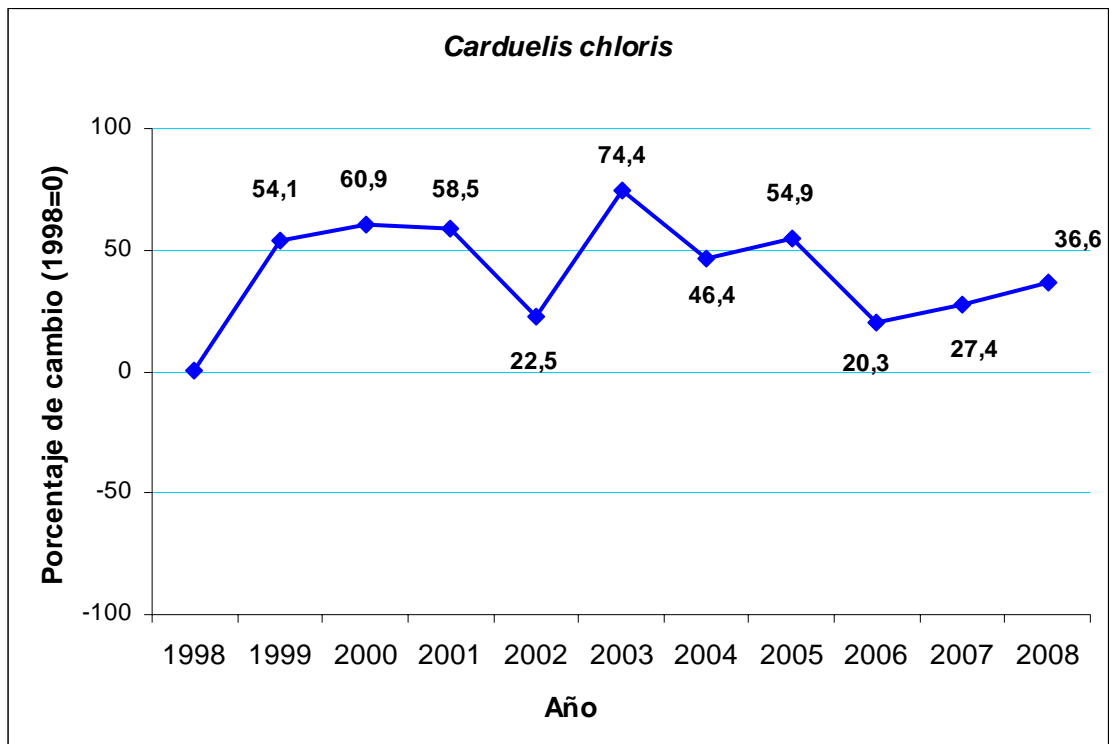
Pardillo común



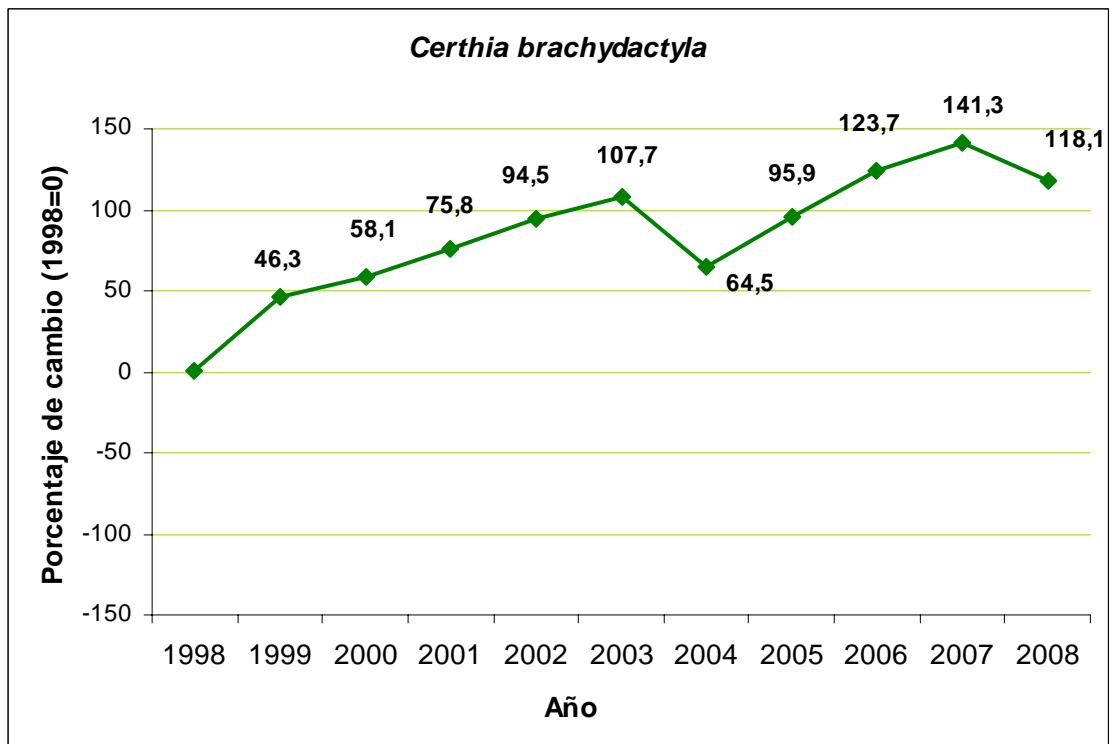
Jilguero



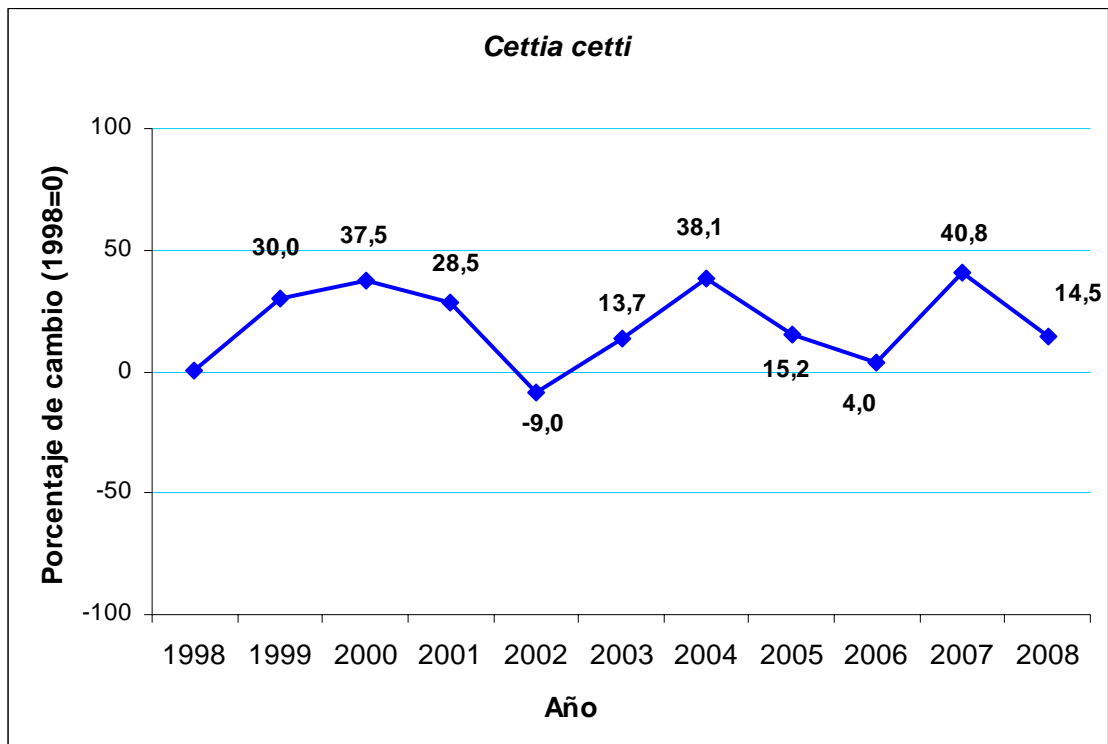
Verderón común



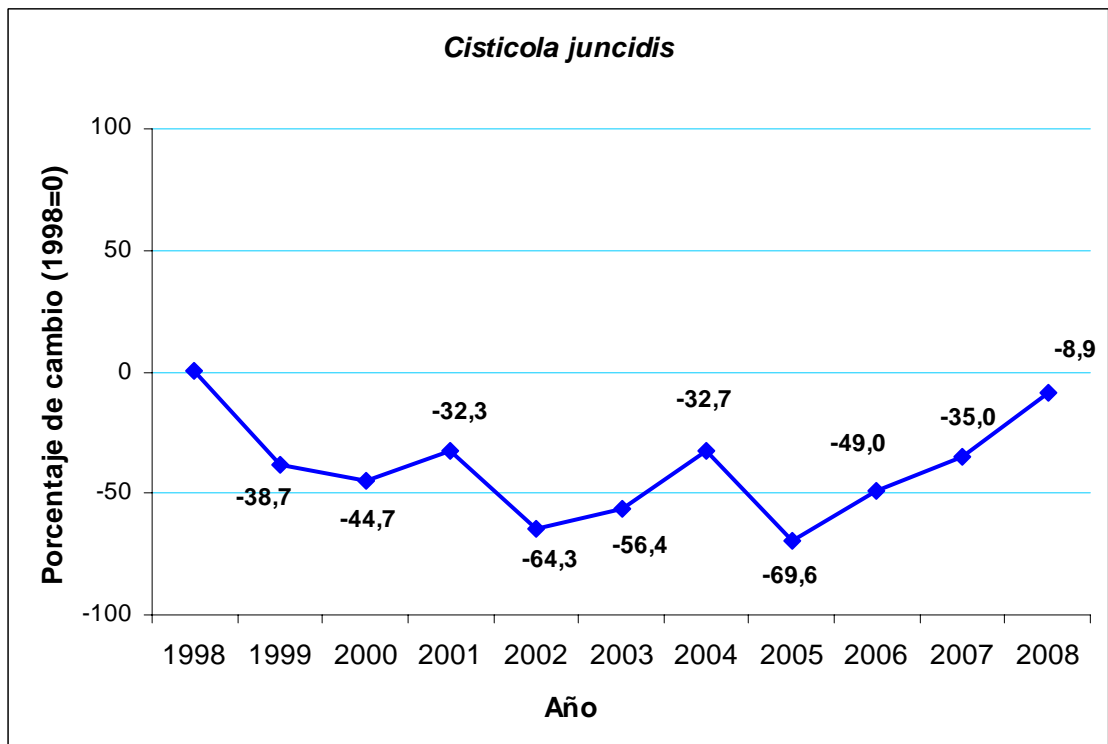
Agateador común



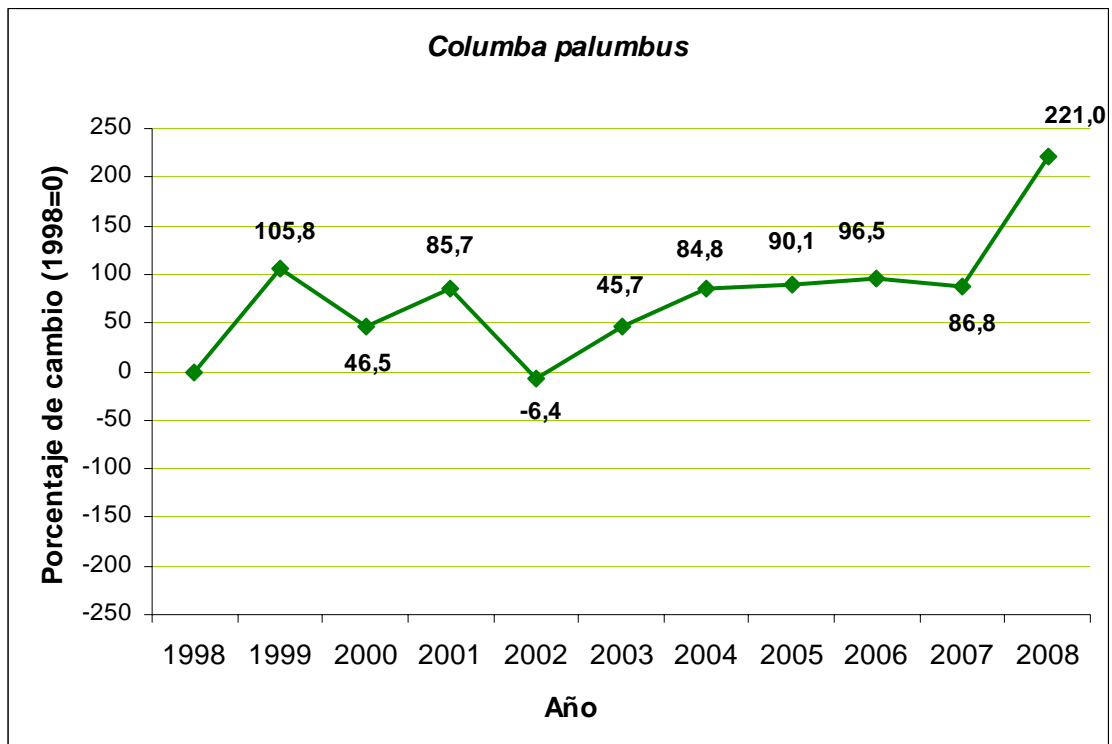
Ruiseñor bastardo



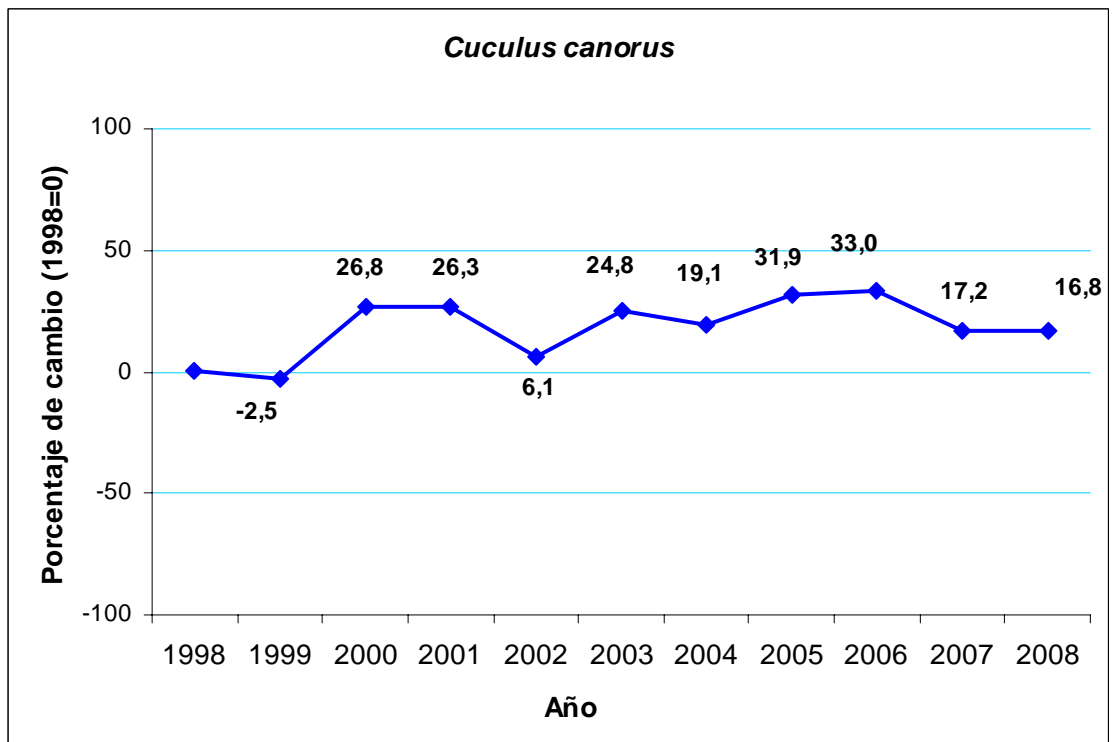
Buitrón



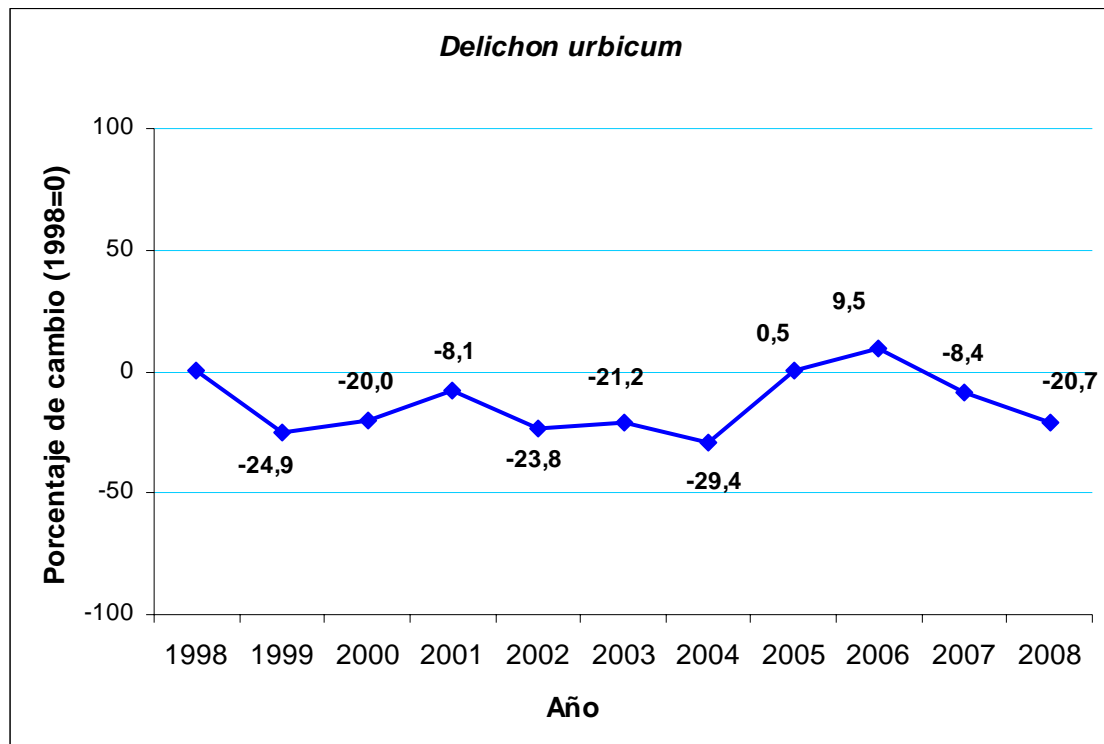
Paloma torcaz



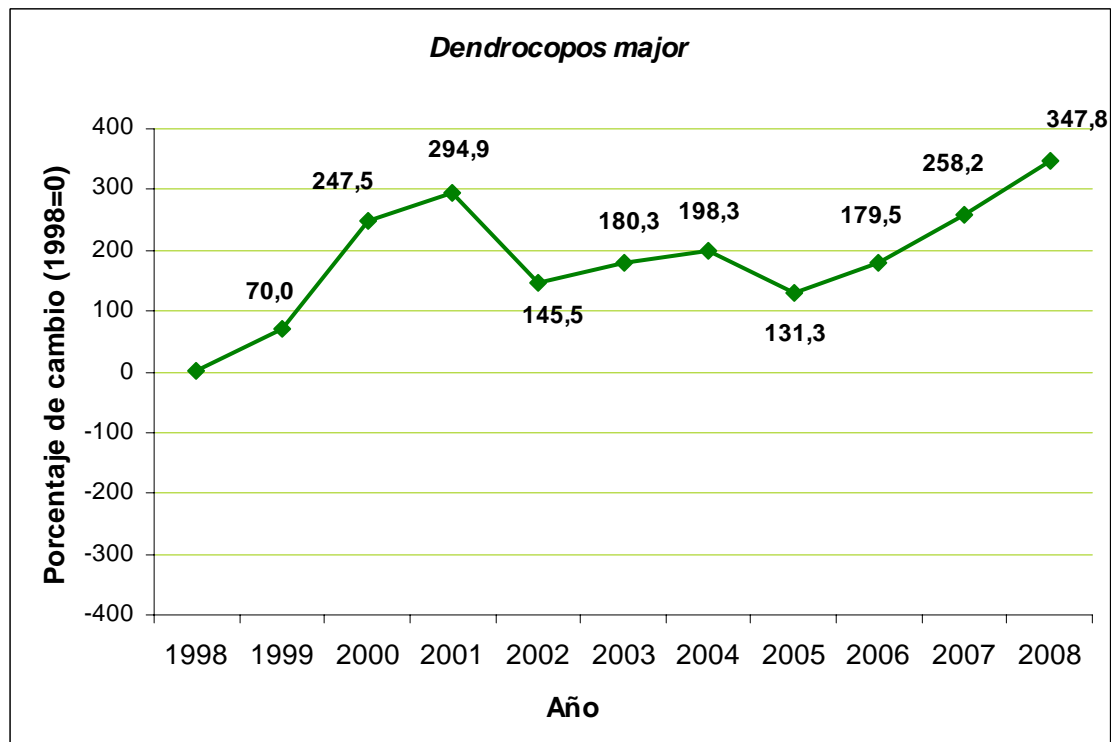
Cuco común



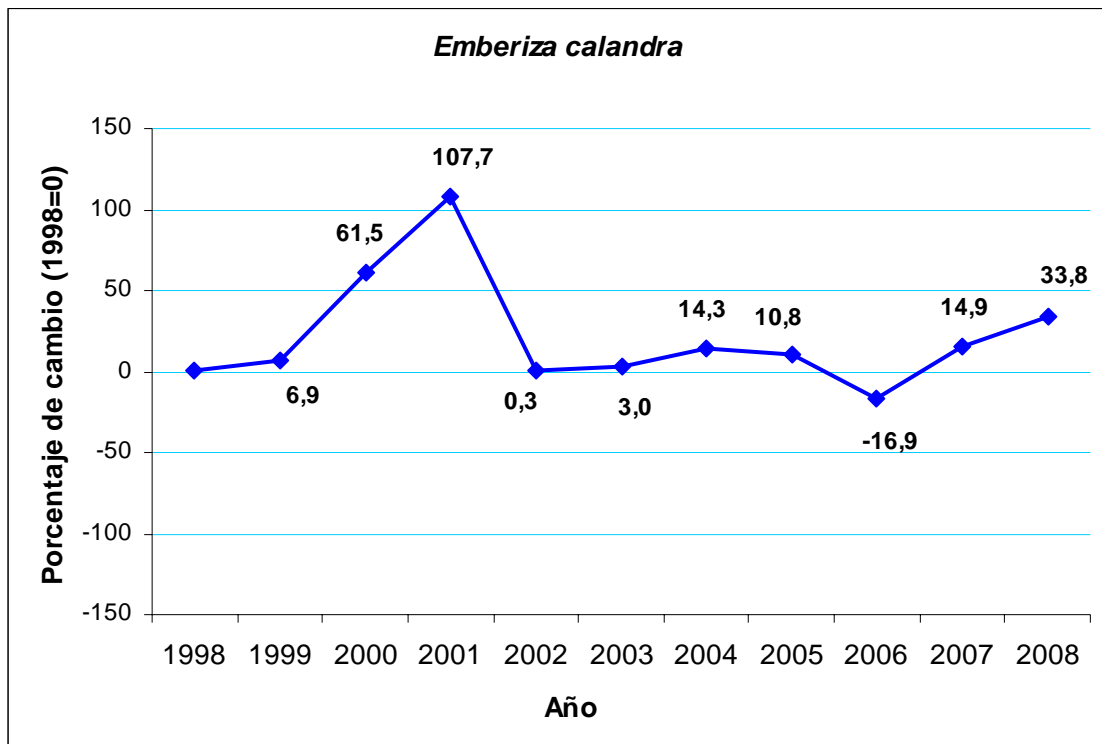
## Avión común



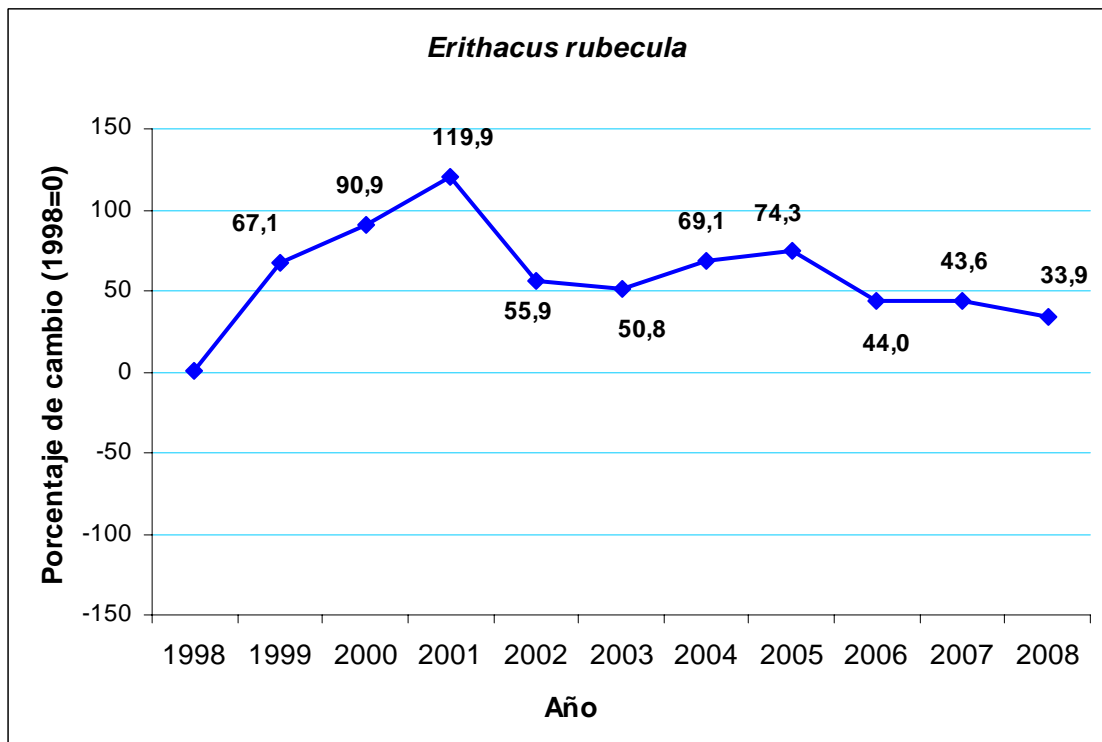
## Pico picapinos



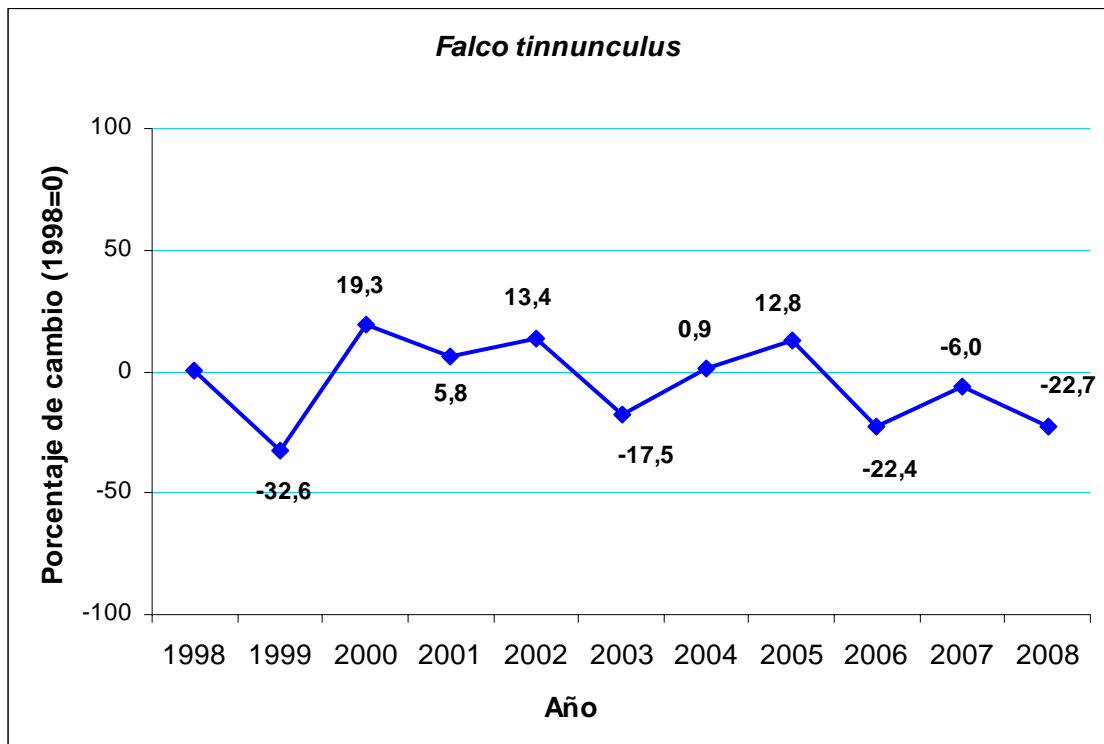
Triguero



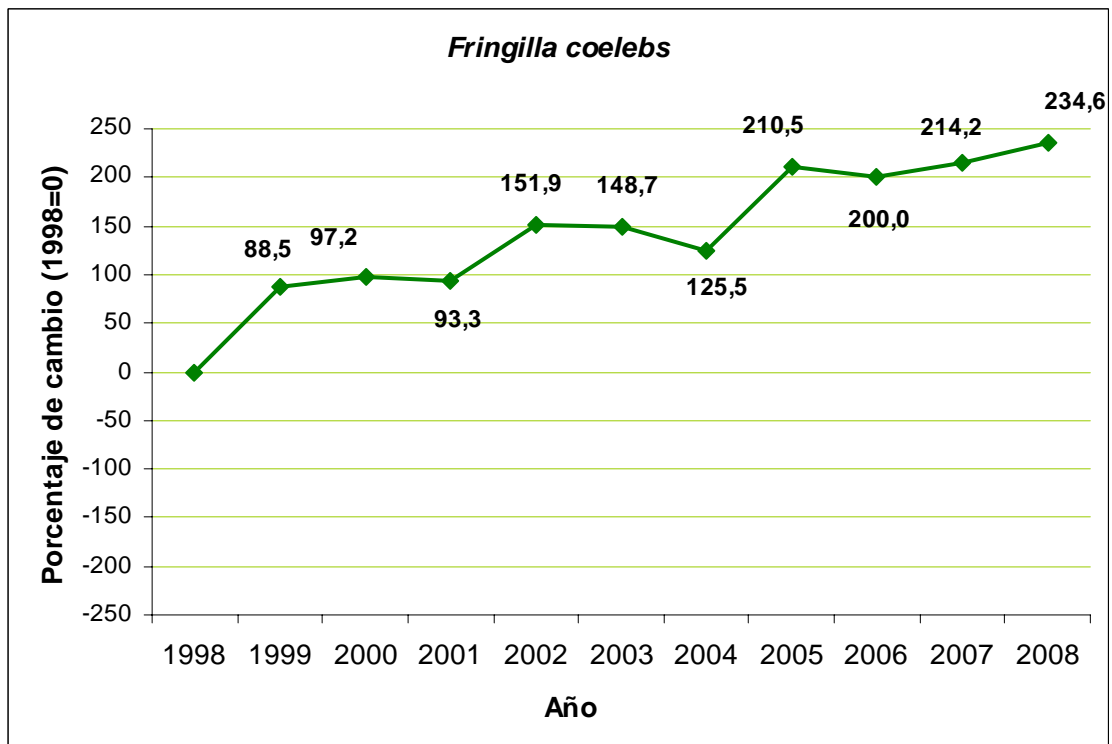
Petirrojo europeo



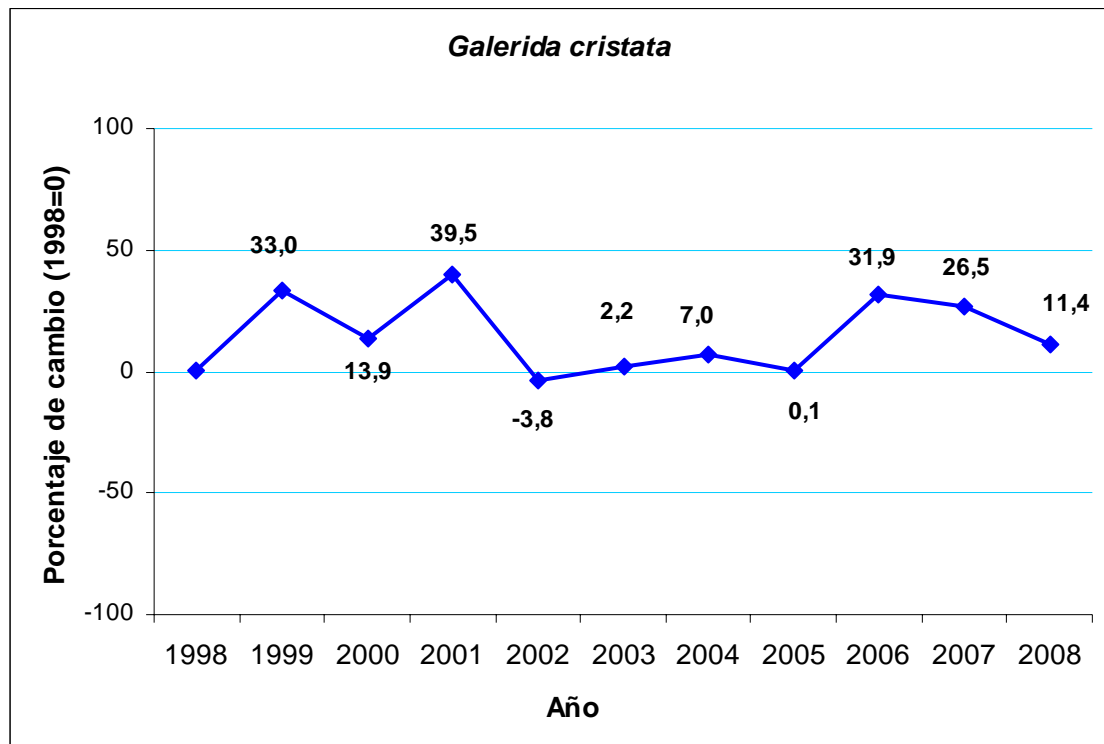
Cernícalo vulgar



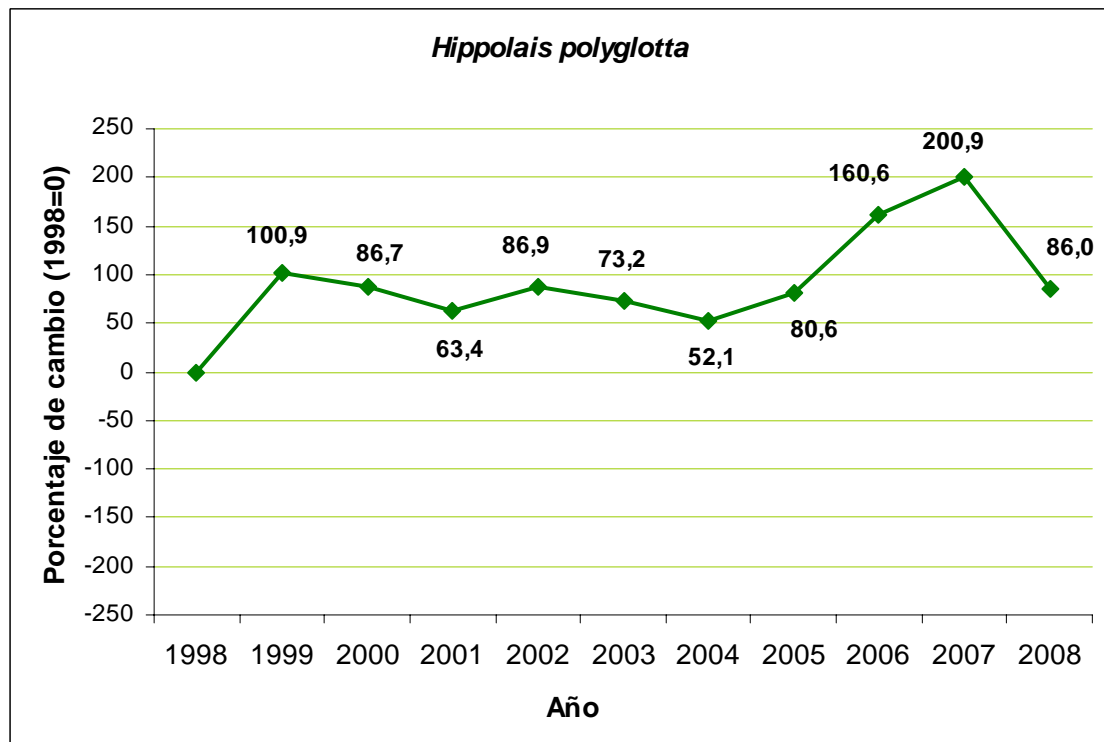
Pinzón vulgar



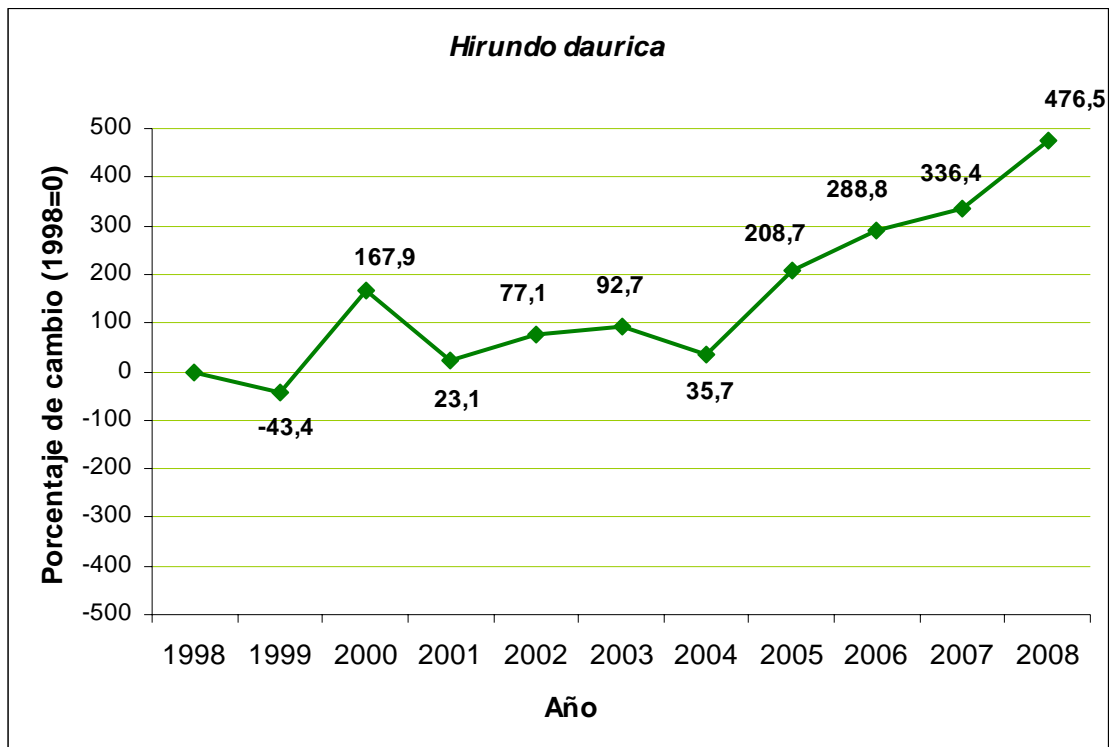
## Cogujada común



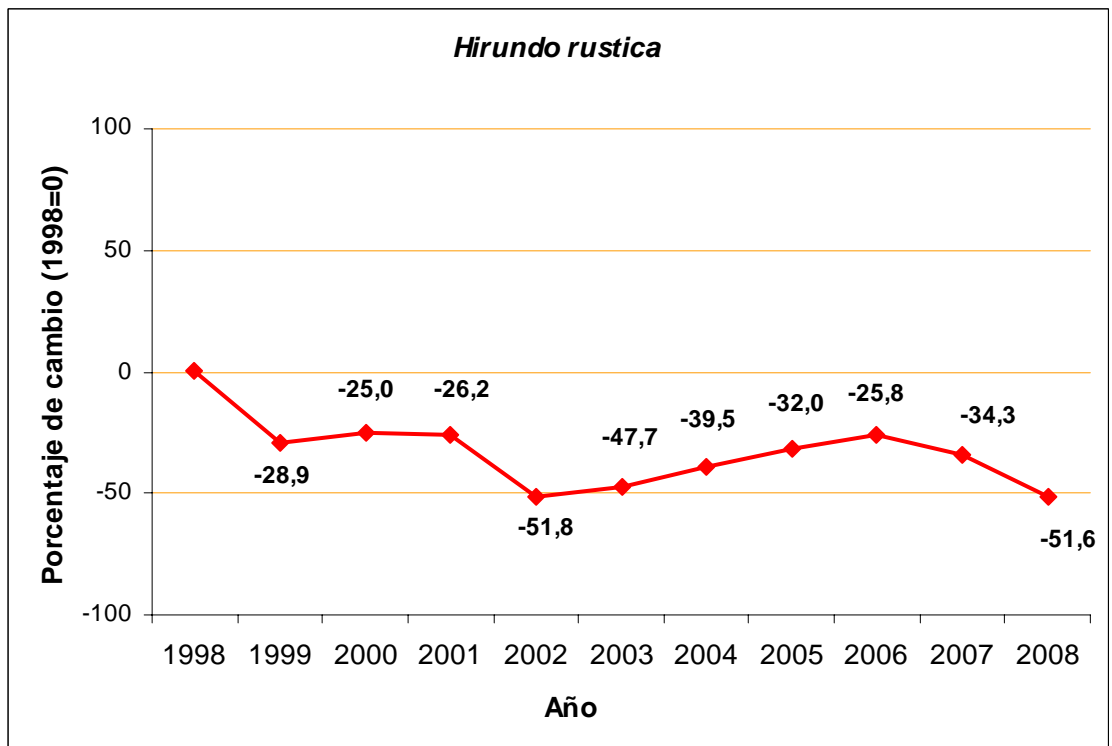
## Zarcero común



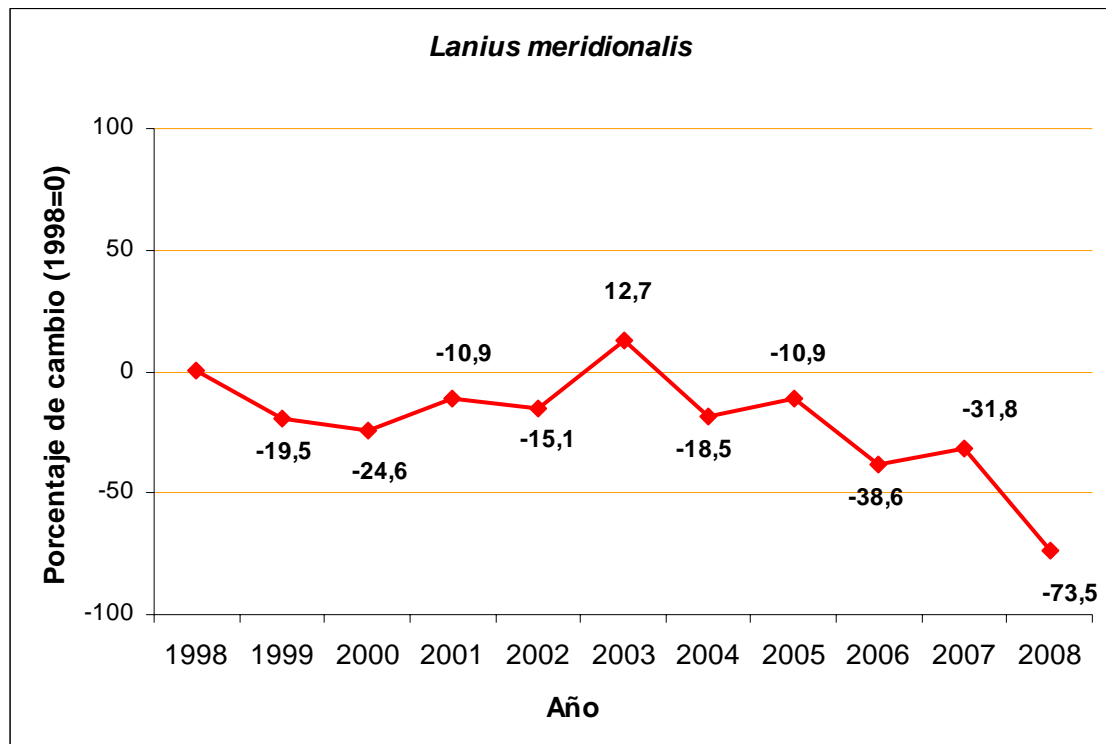
Golondrina daúrica



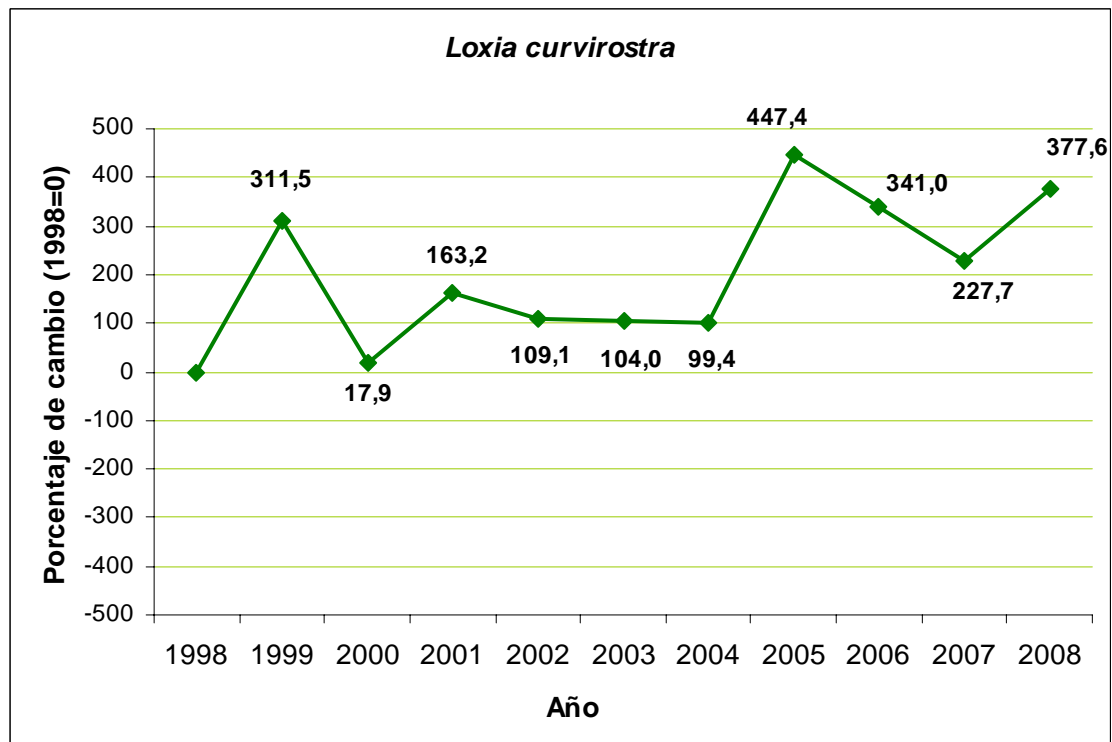
Golondrina común



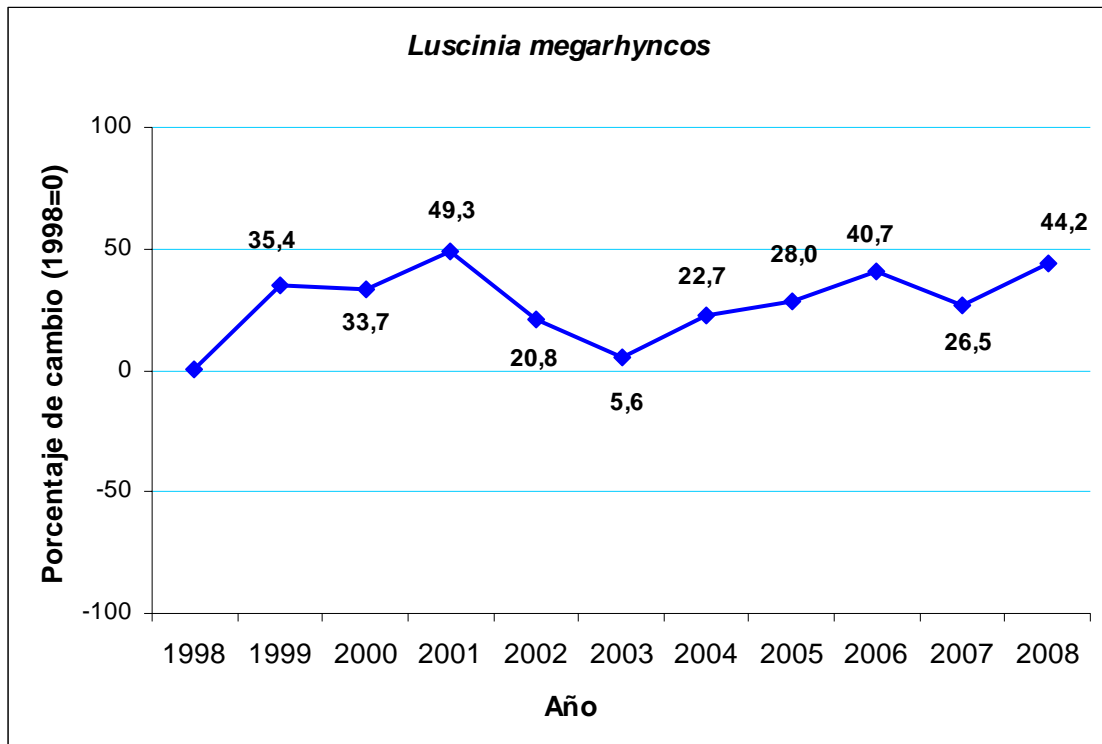
## Alcaudón real



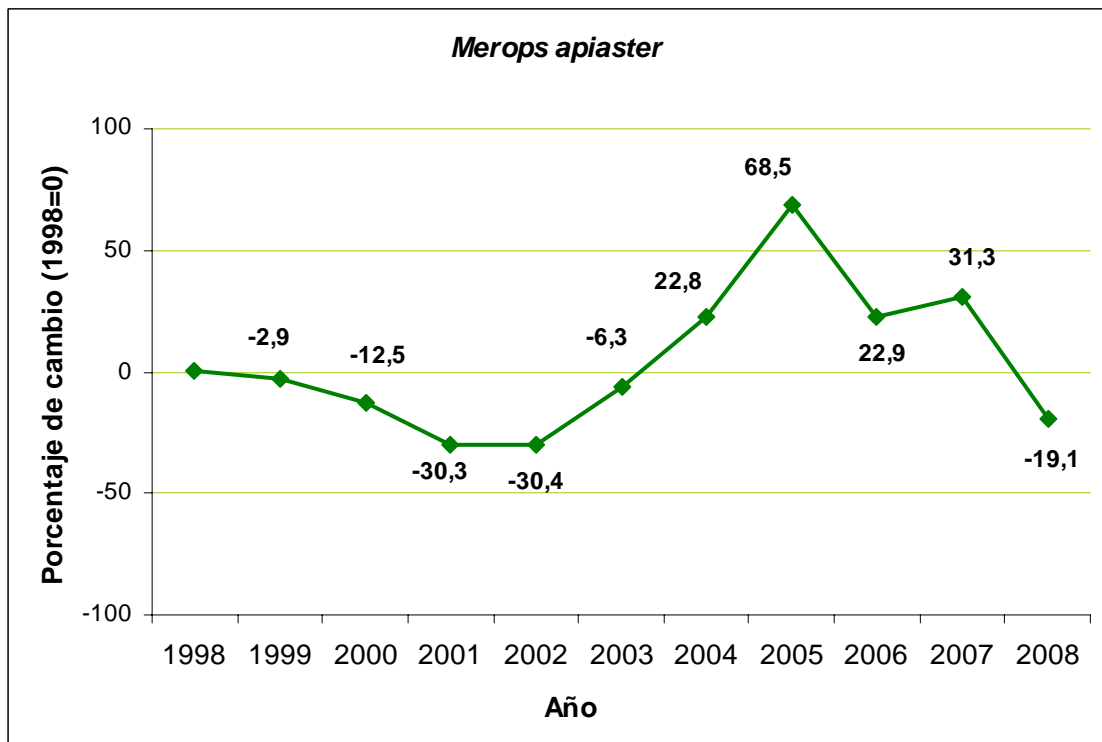
## Piquituerto común



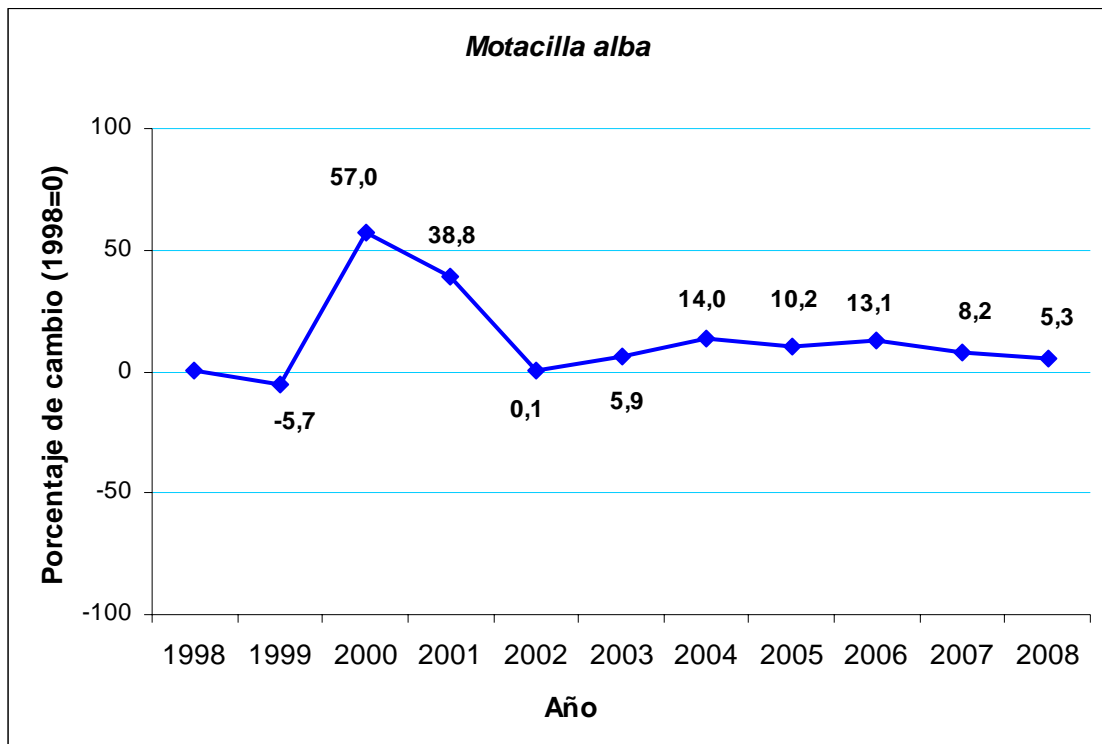
Ruiseñor común



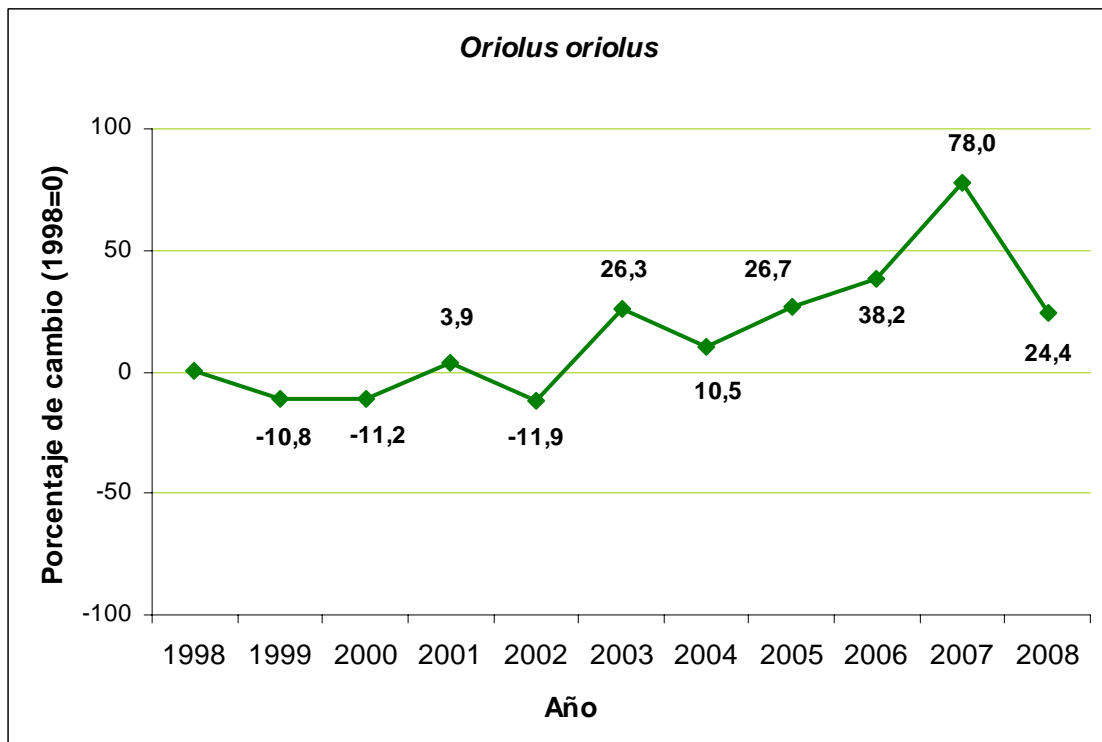
Abejaruco europeo



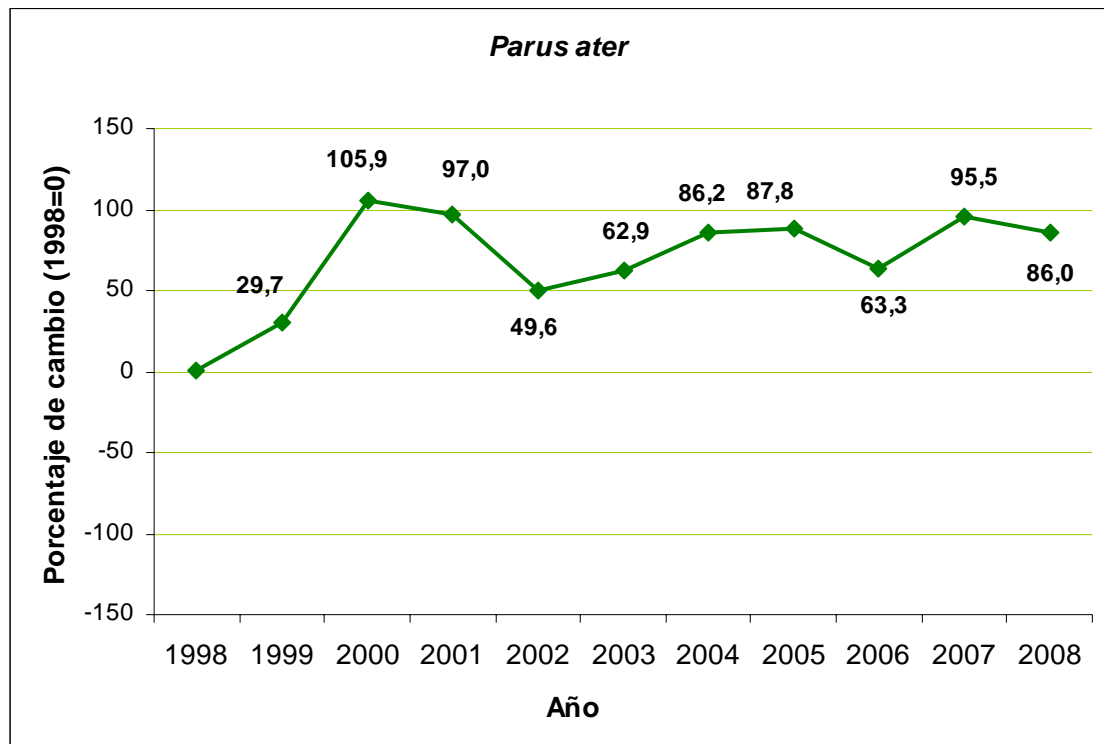
Lavandera blanca



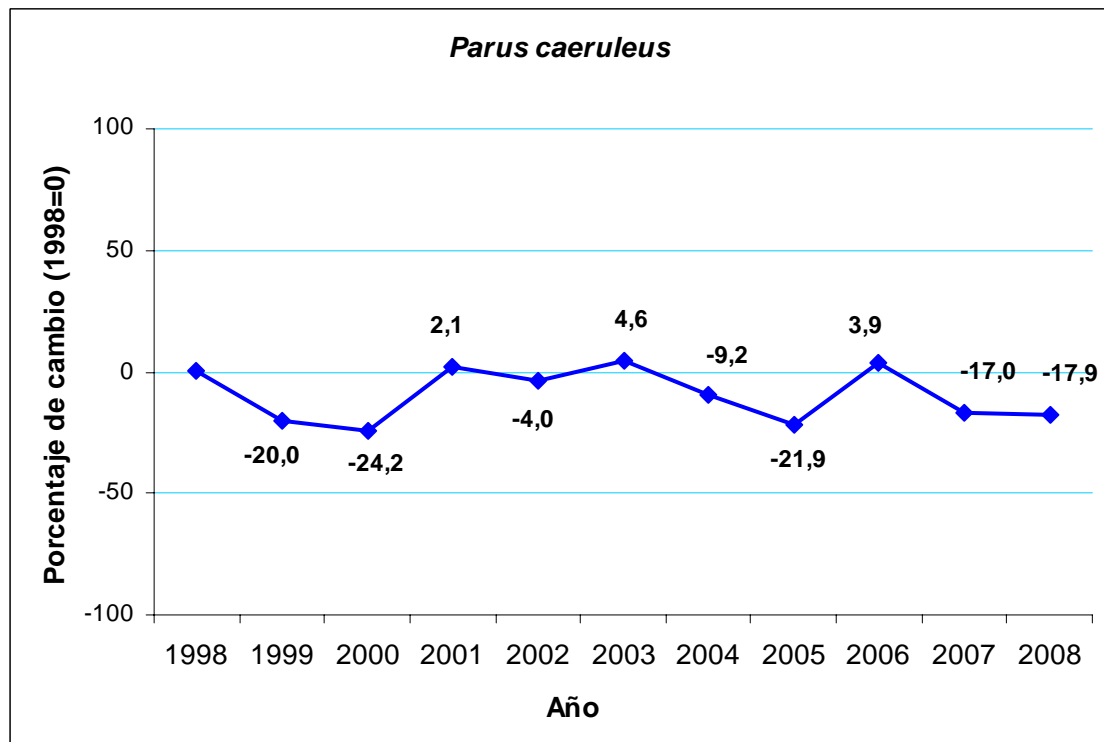
Oropéndola



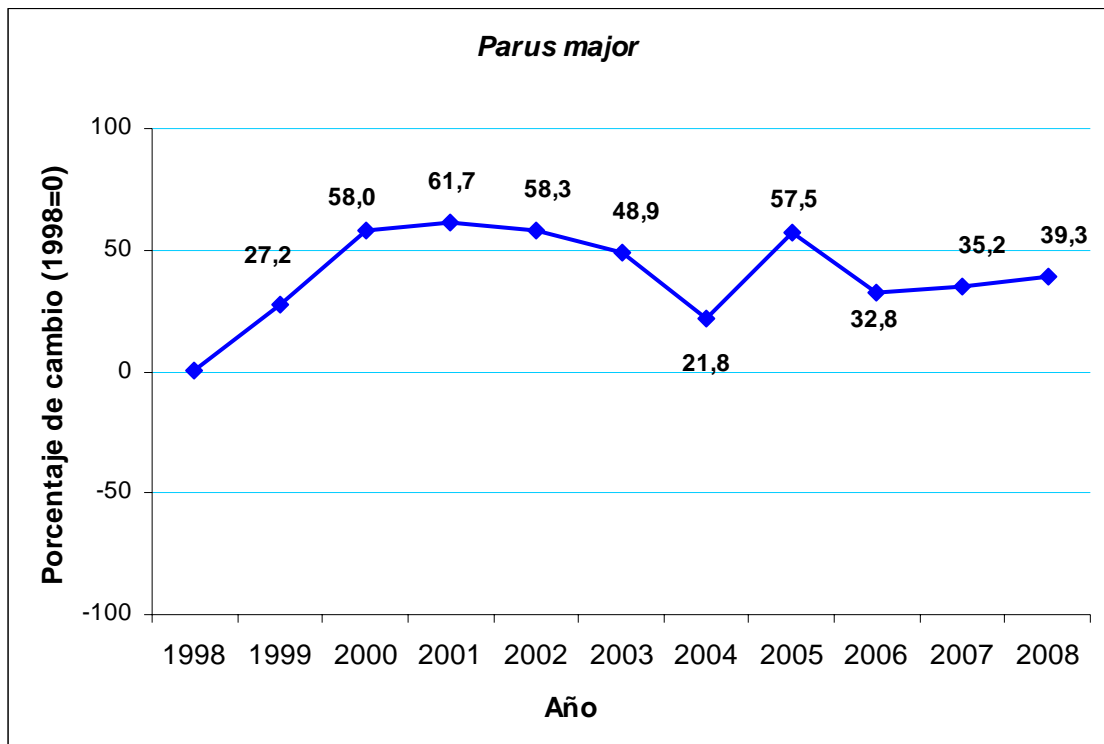
## Carbonero garrapinos



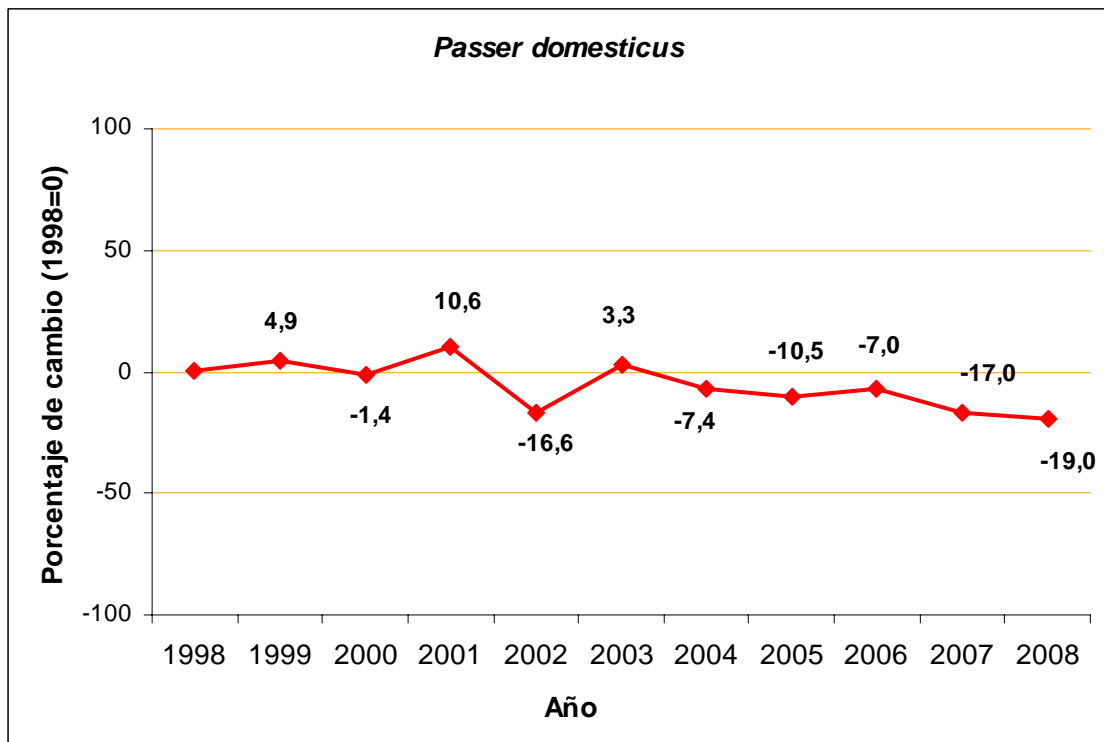
## Herrerillo común



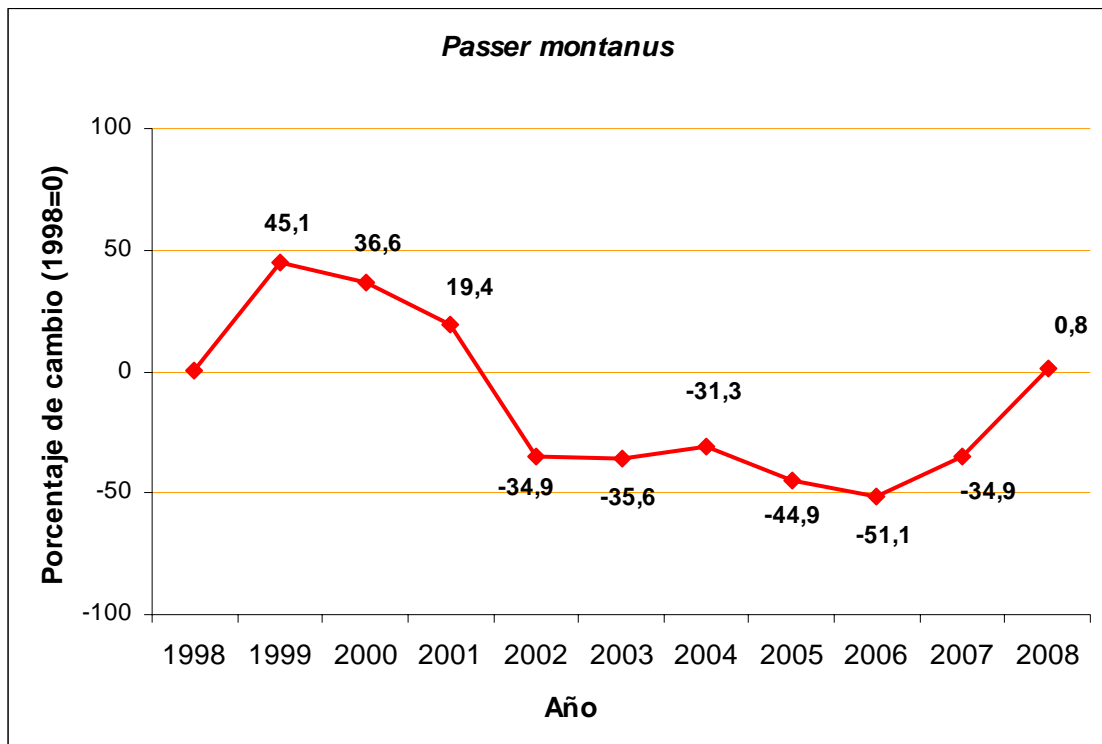
Carbonero común



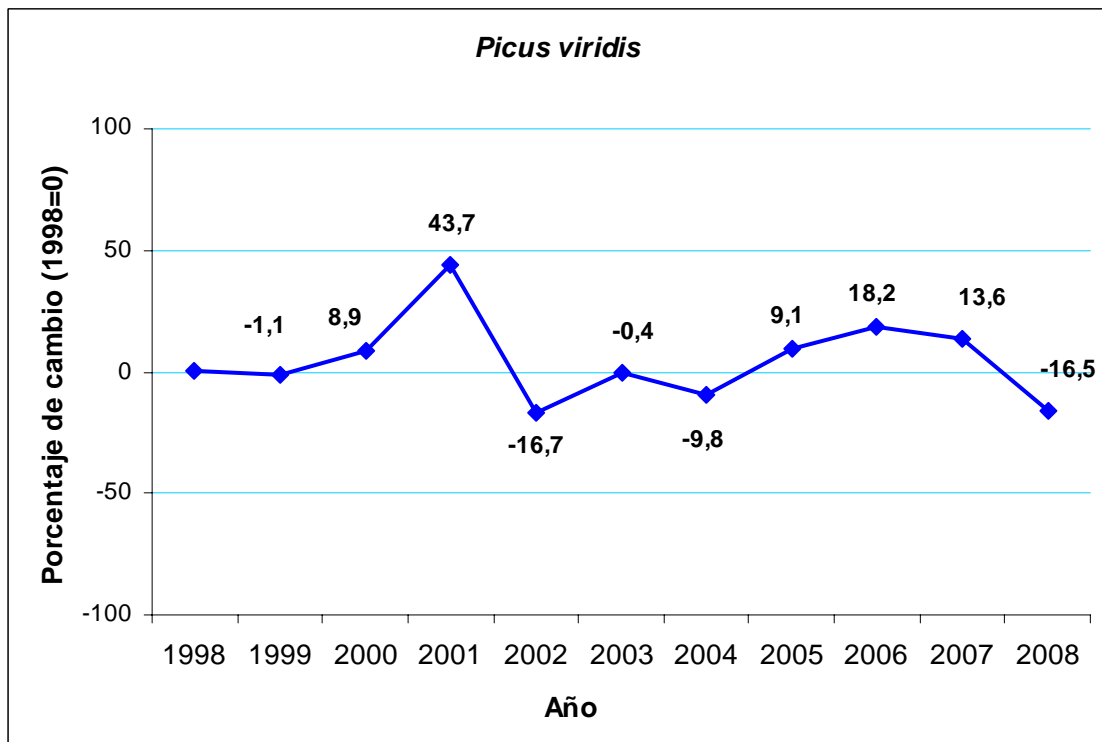
Gorrion común



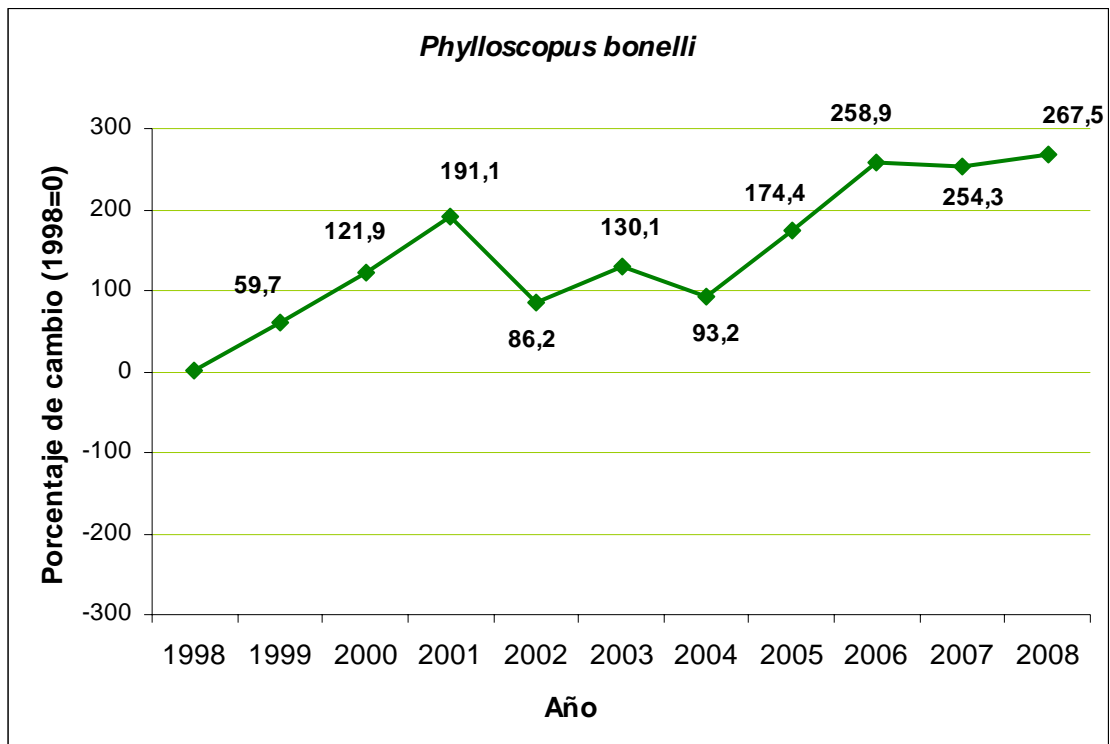
Gorrión molinero



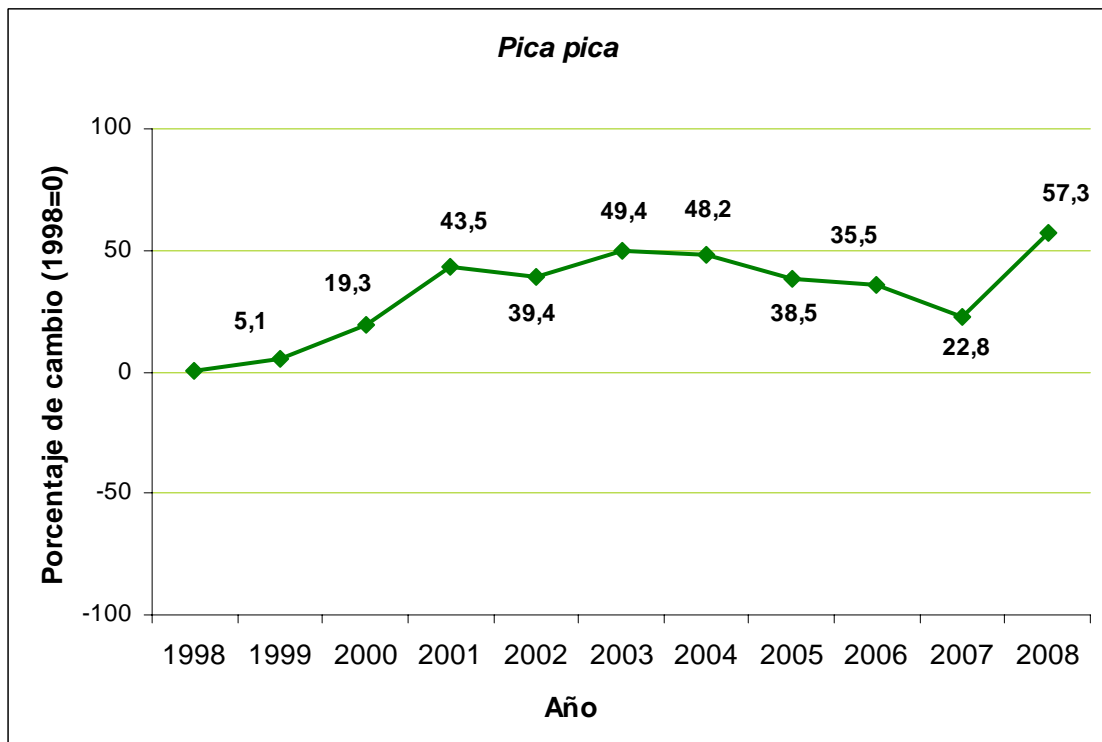
Pito real



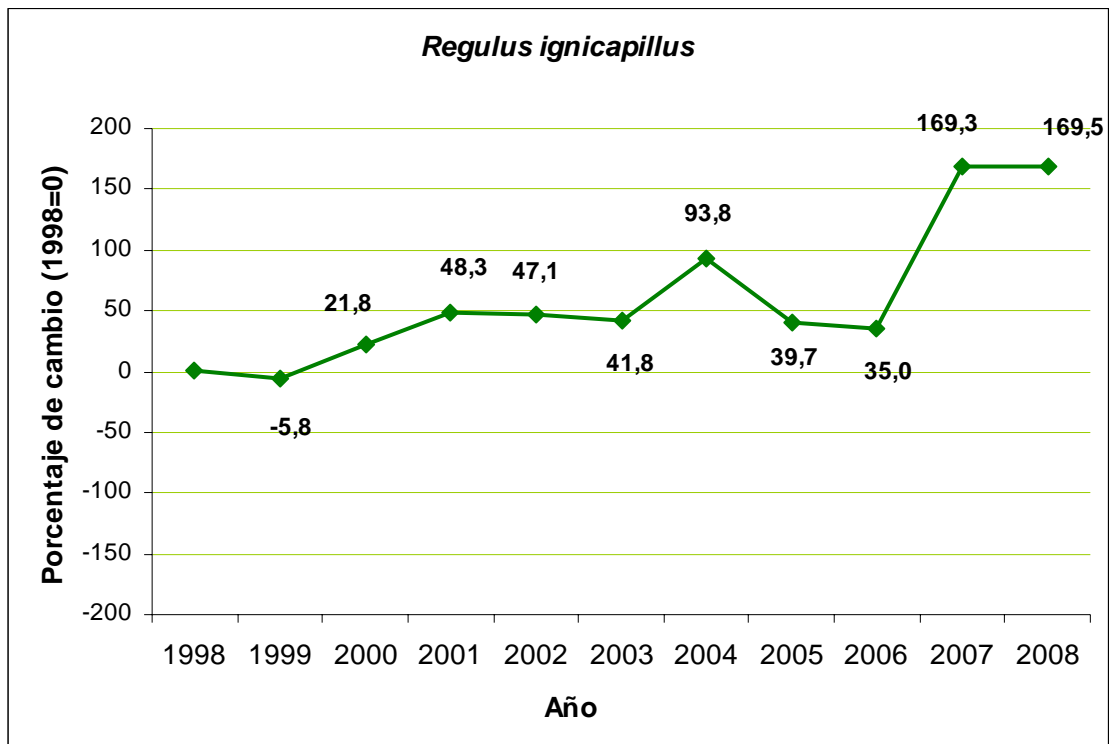
## Mosquitero papialbo



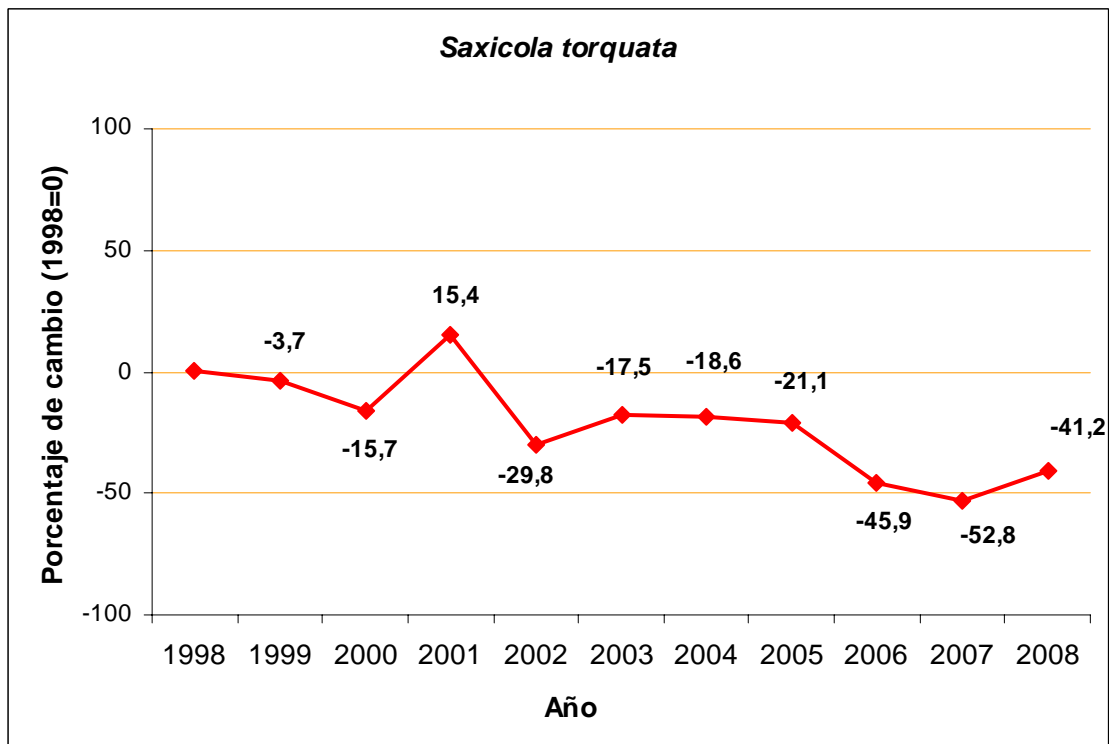
## Urraca



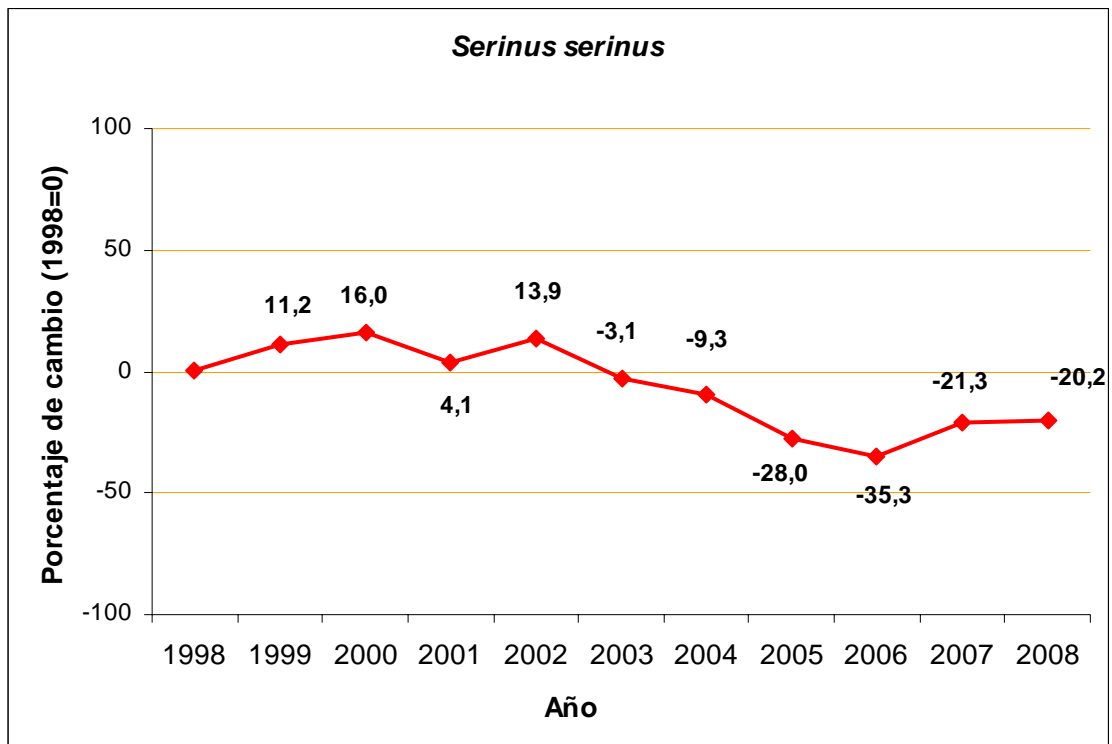
Reyezuelo listado



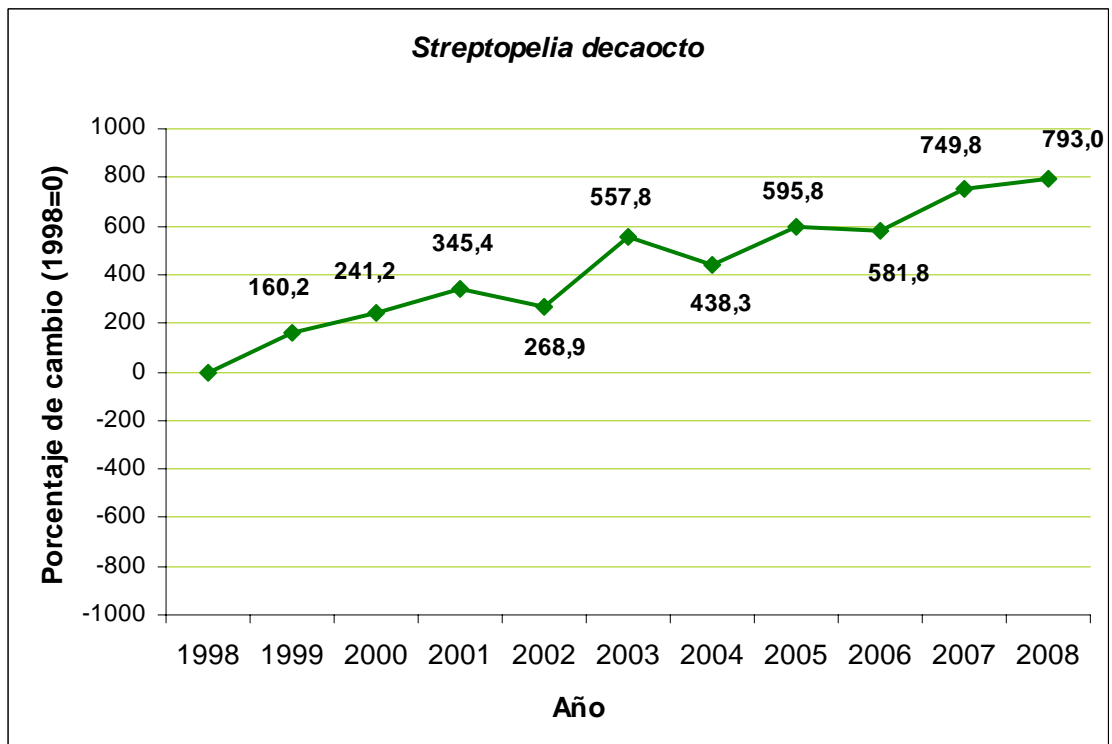
Tarabilla común



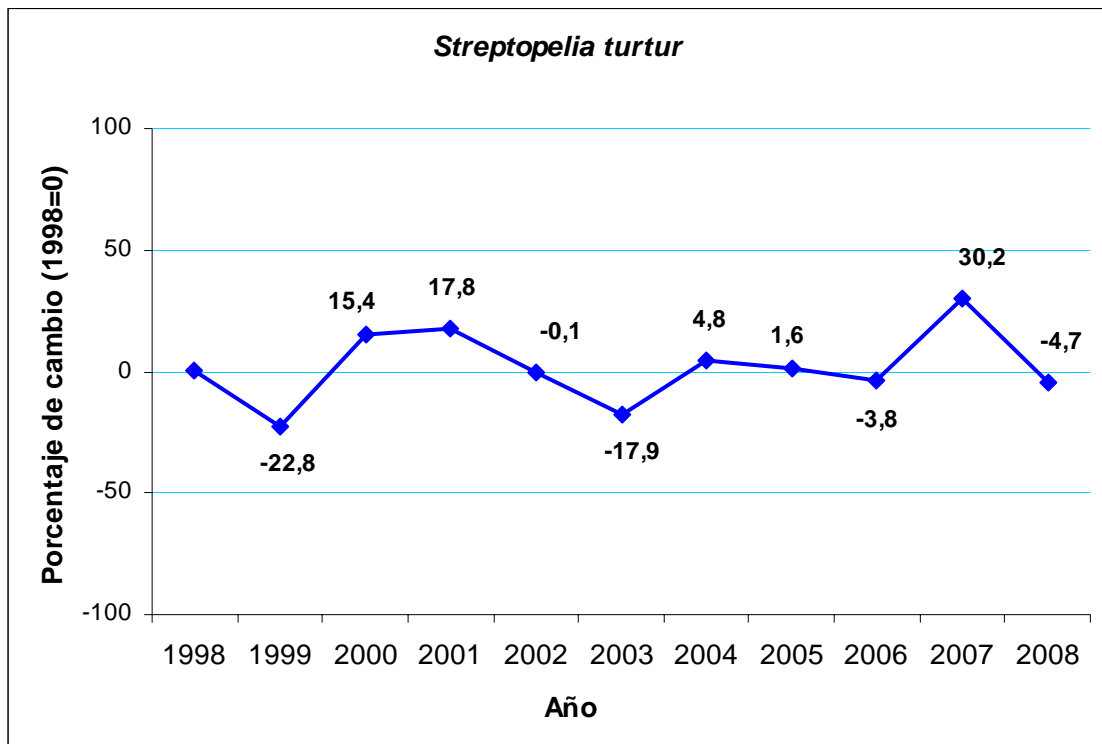
Verdecillo



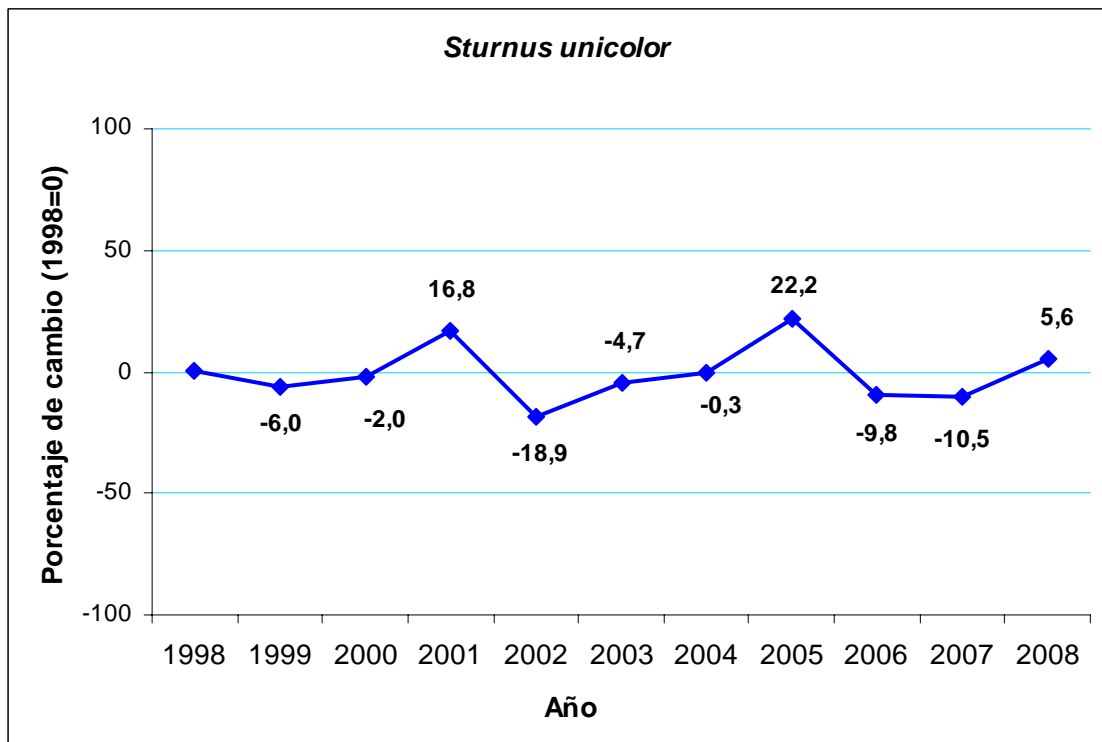
Tórtola turca



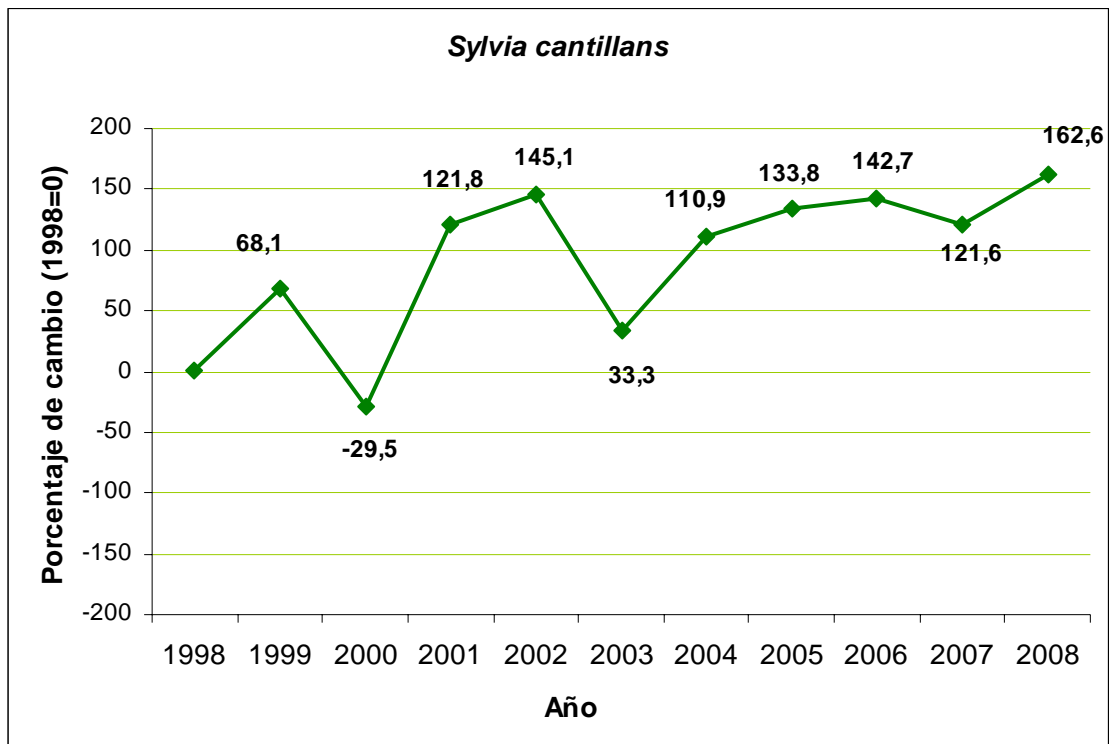
Tórtola europea



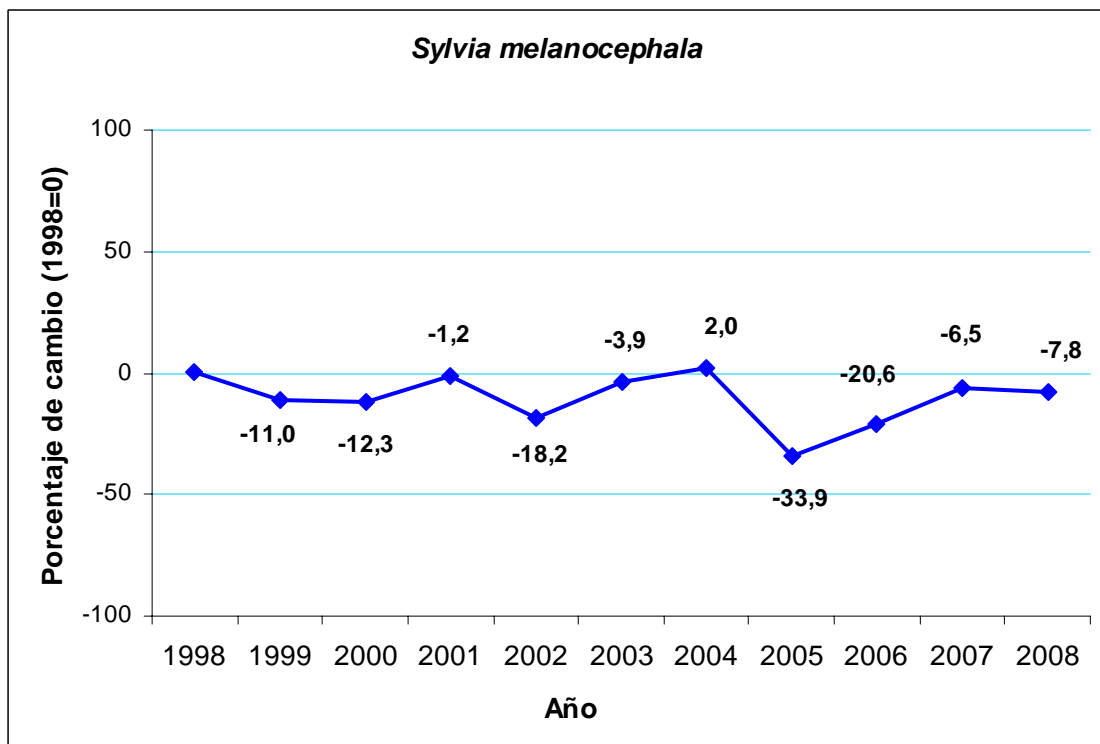
Estornino negro



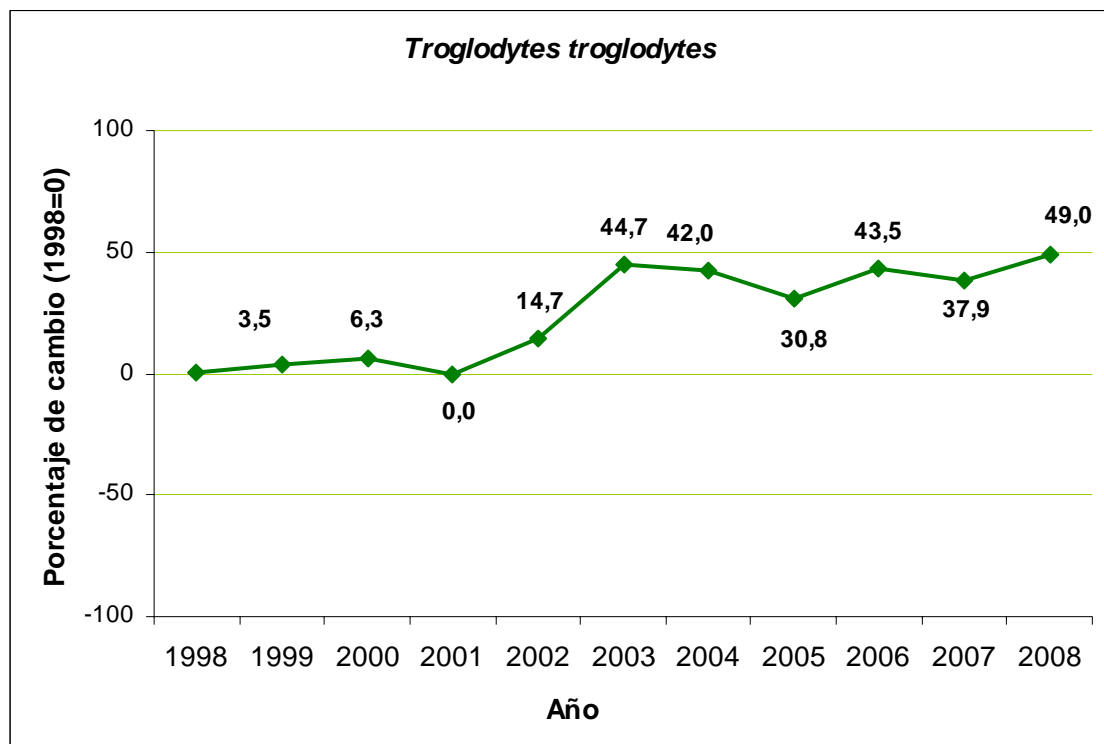
Curruca carrasqueña



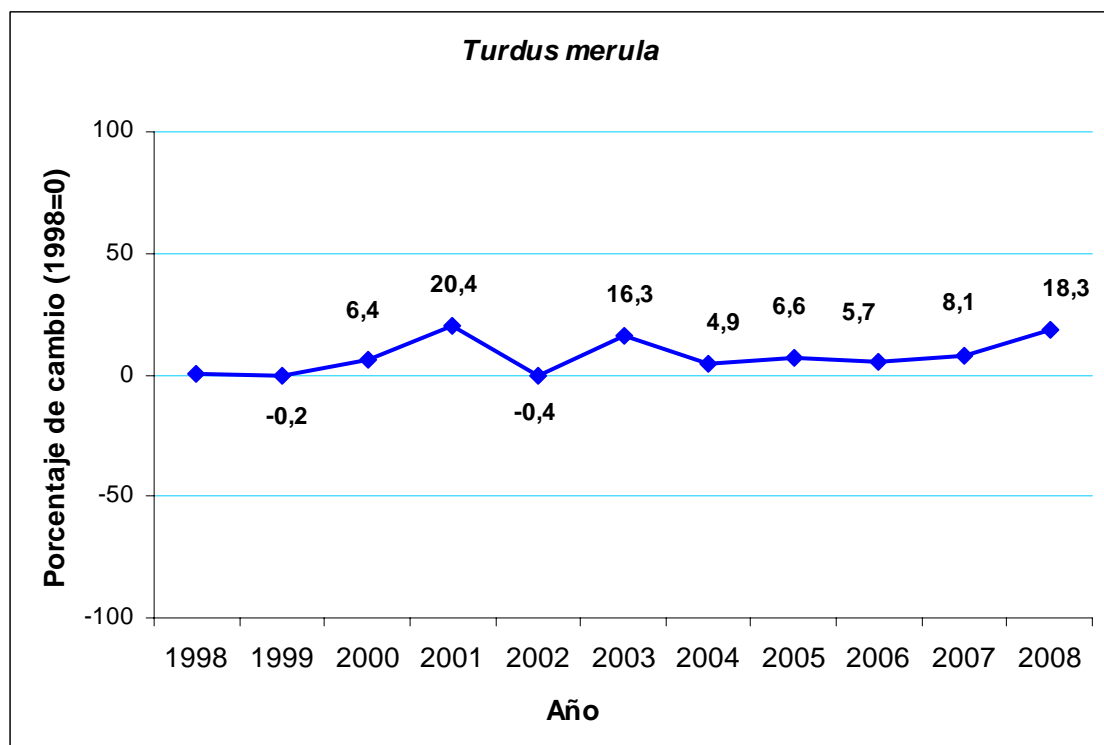
Curruca cabecinegra



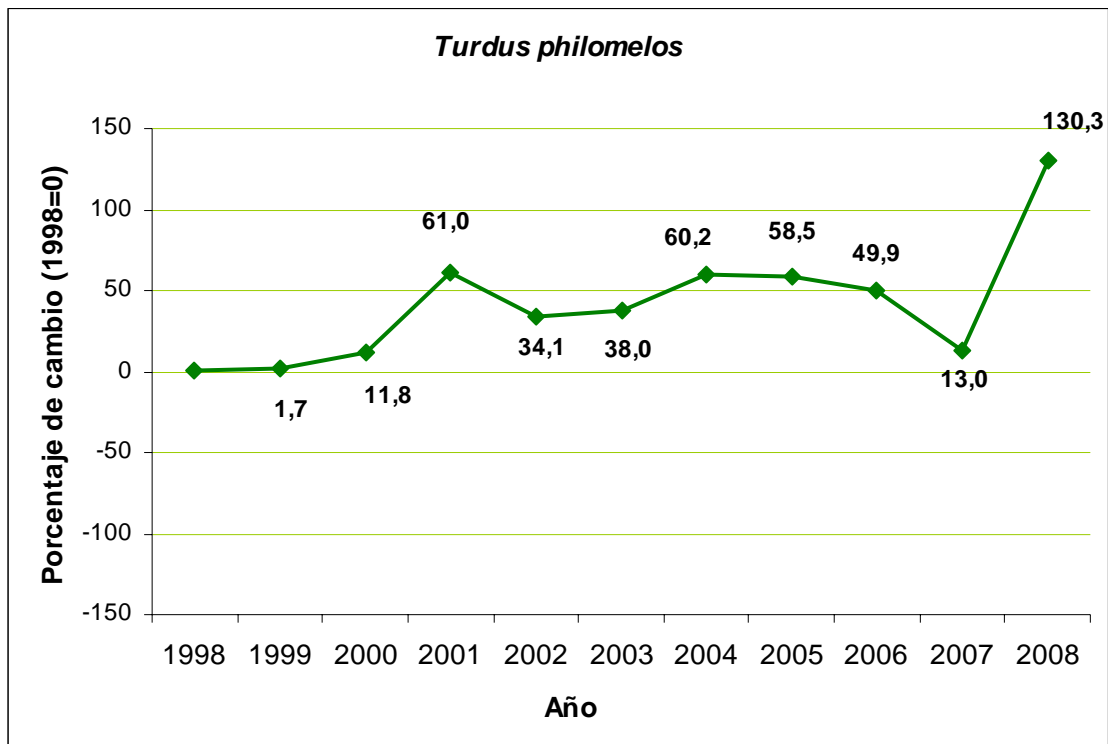
## Chochín común



## Mirlo común



Zorzal común



Abubilla

