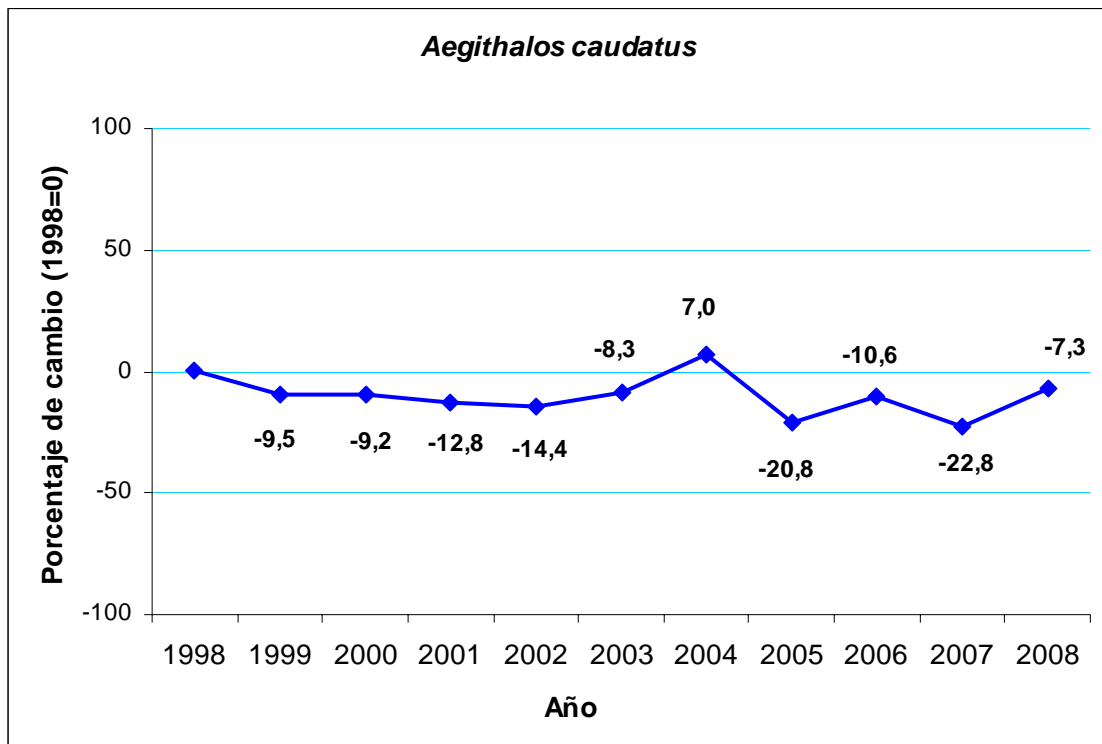
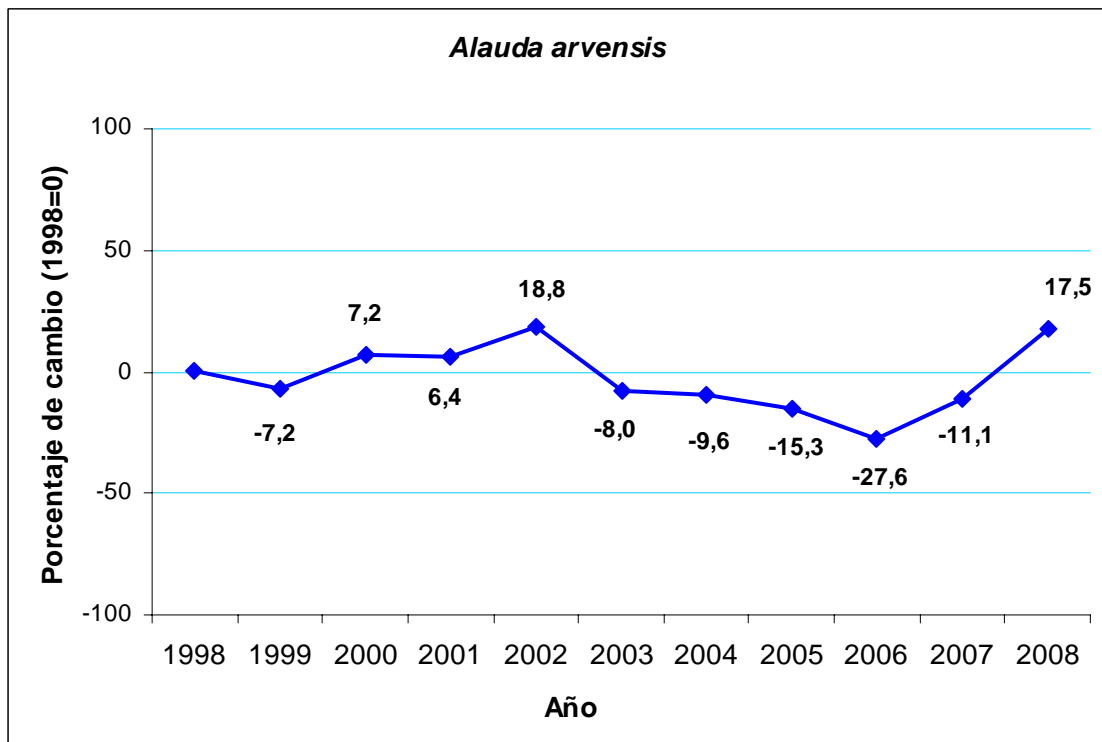


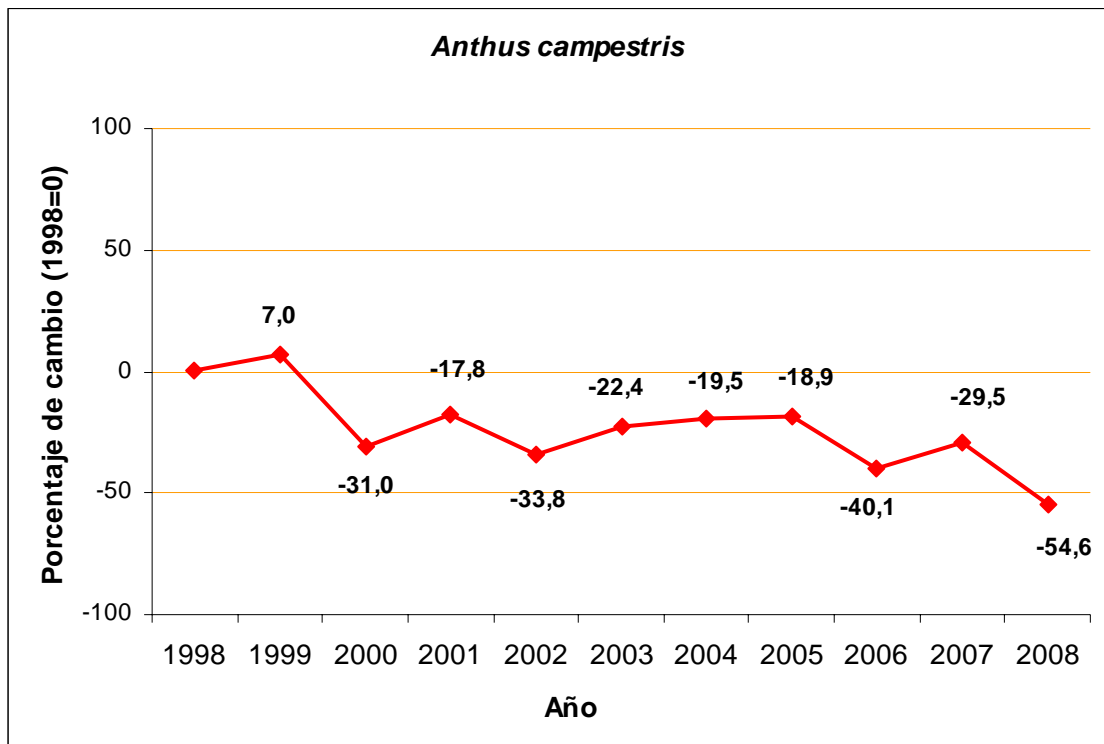
Mito



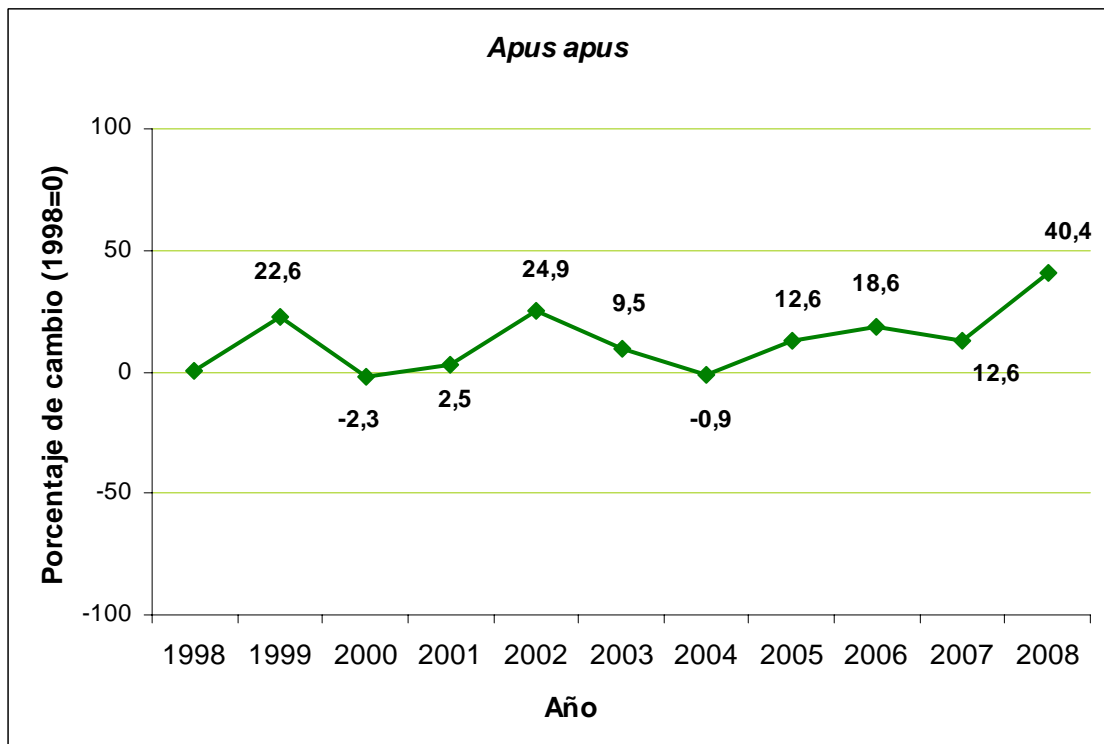
Alondra común



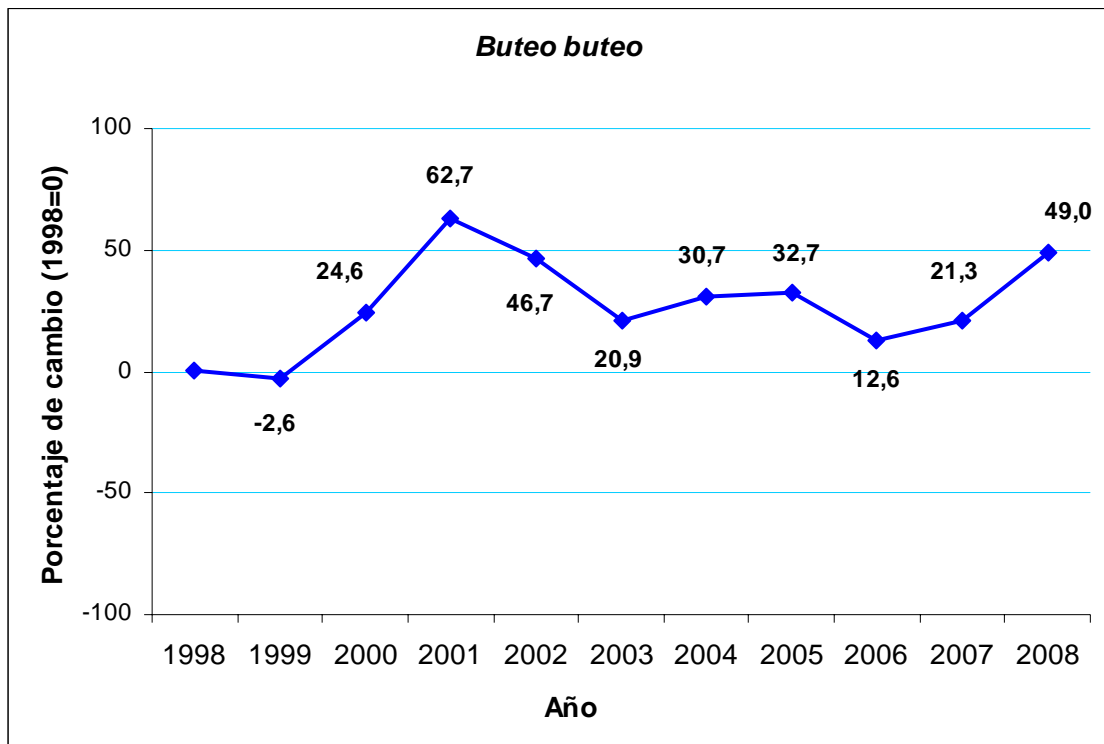
Bisbita campestre



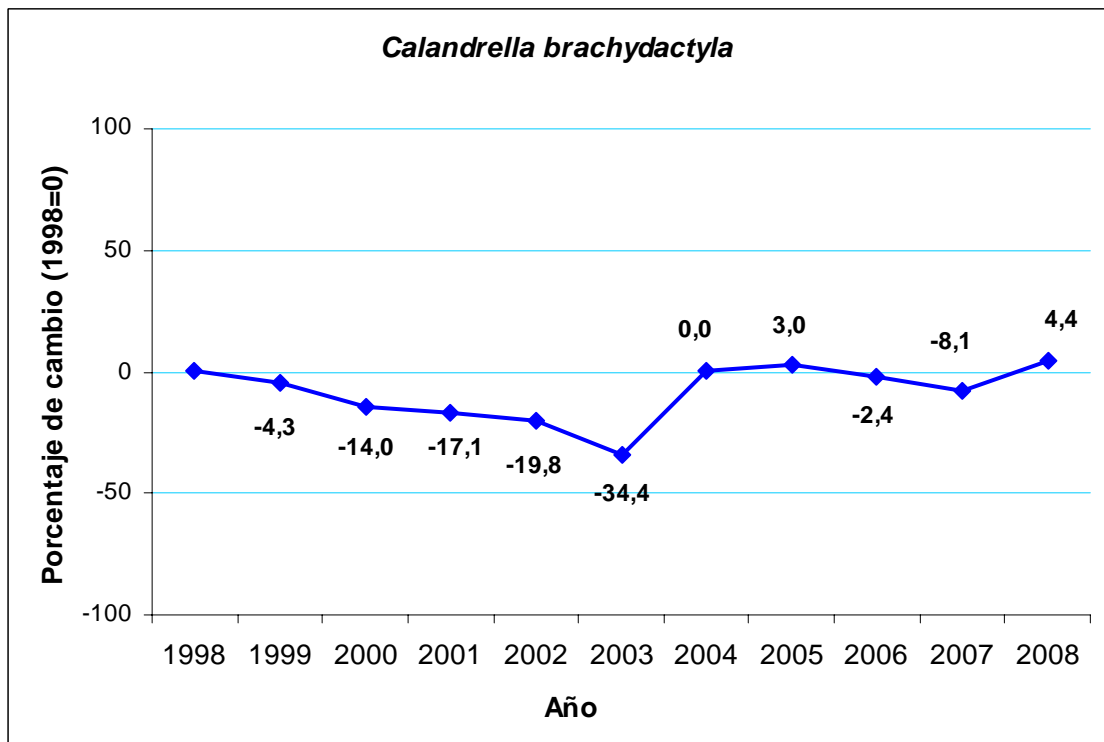
Vencejo común



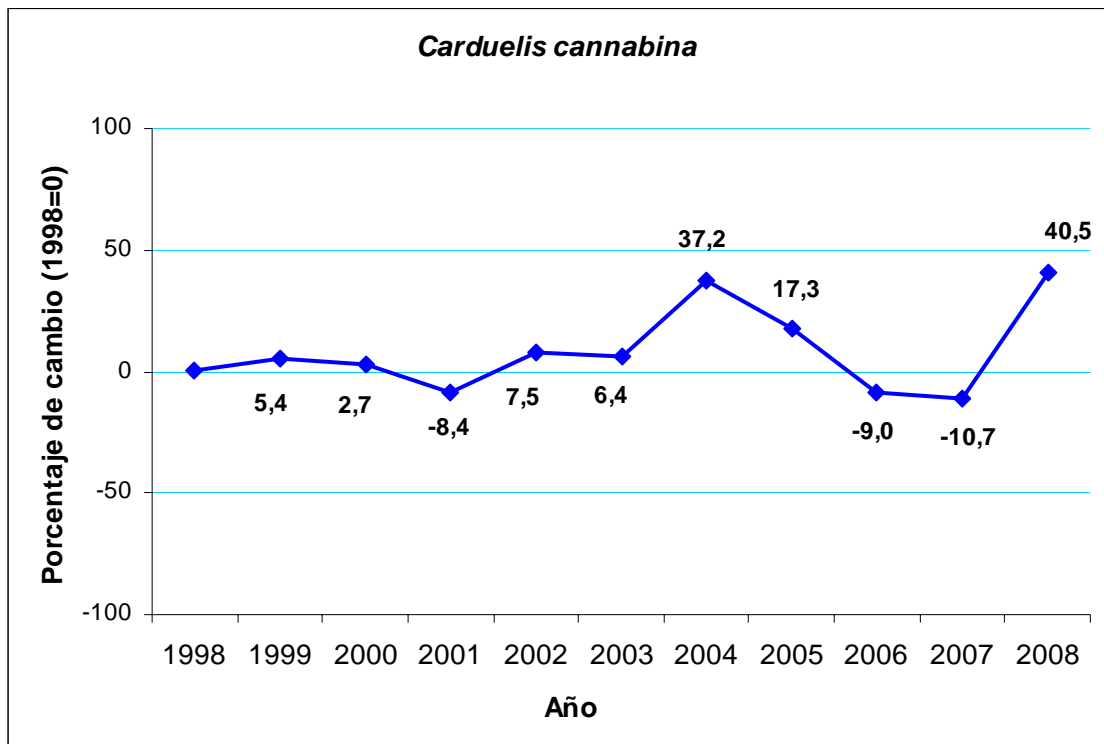
Ratonero común



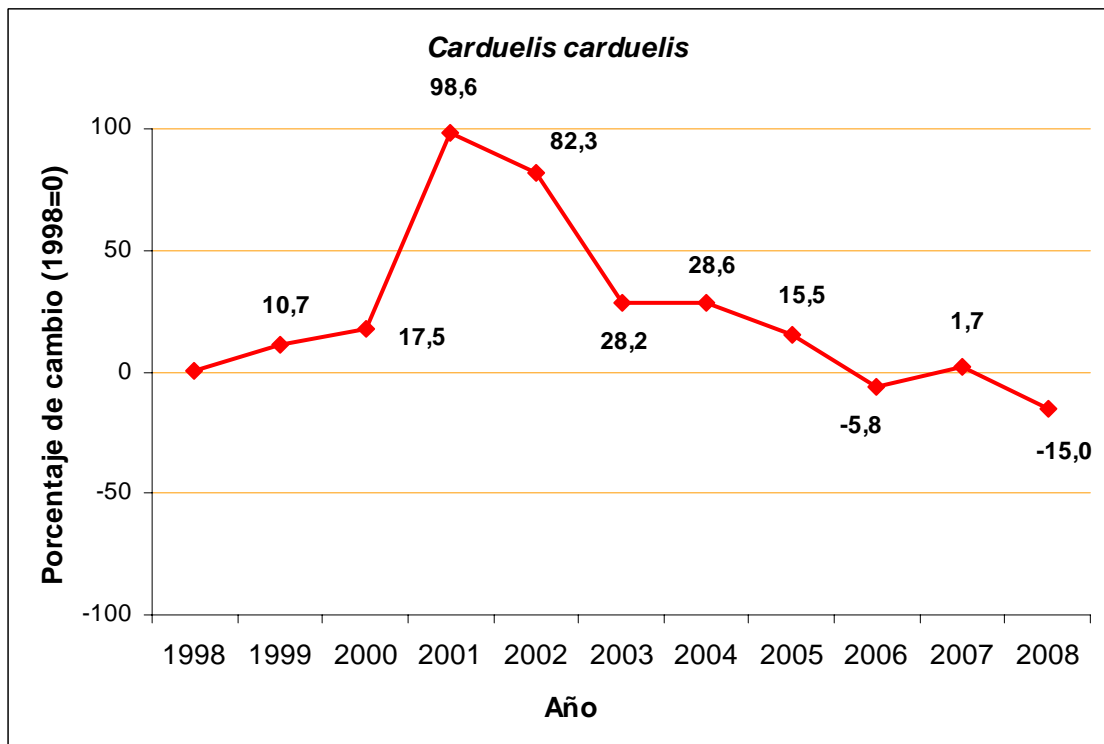
Terrera común



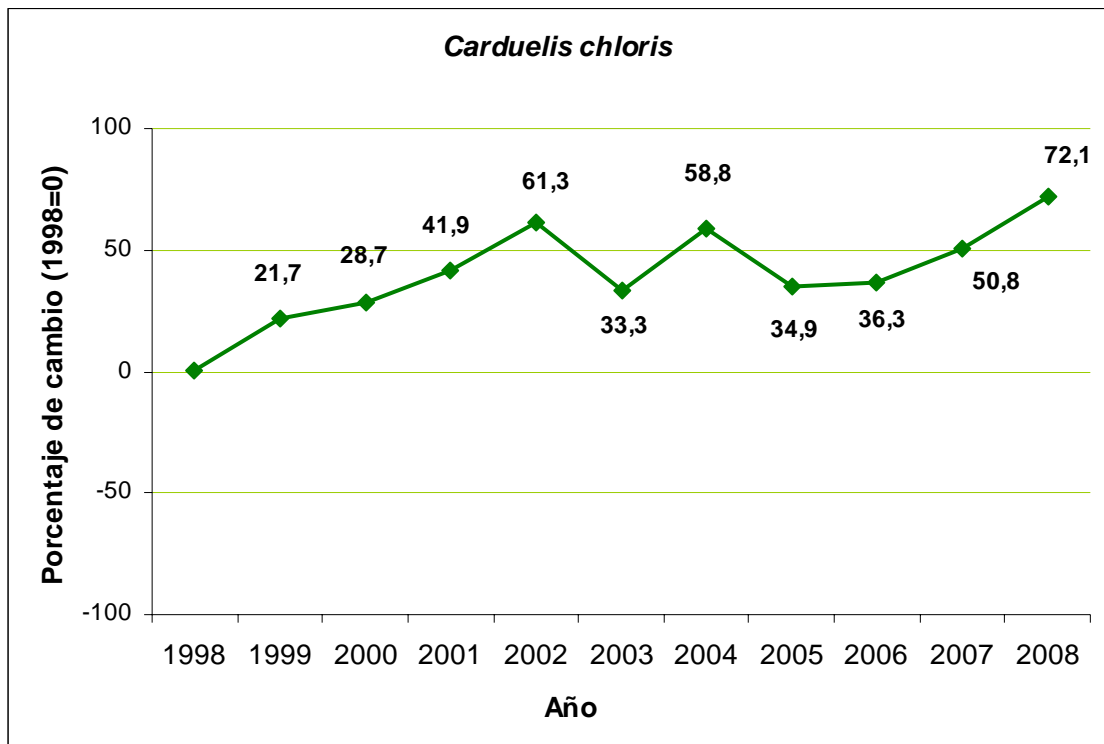
Pardillo común



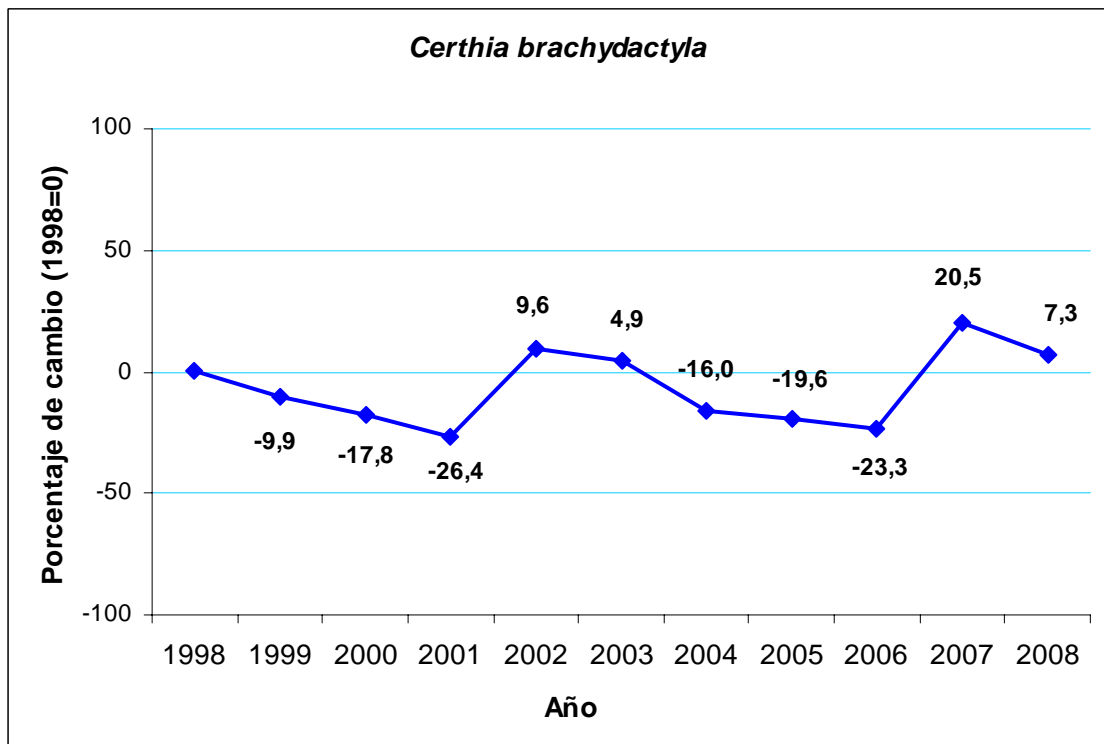
Jilguero



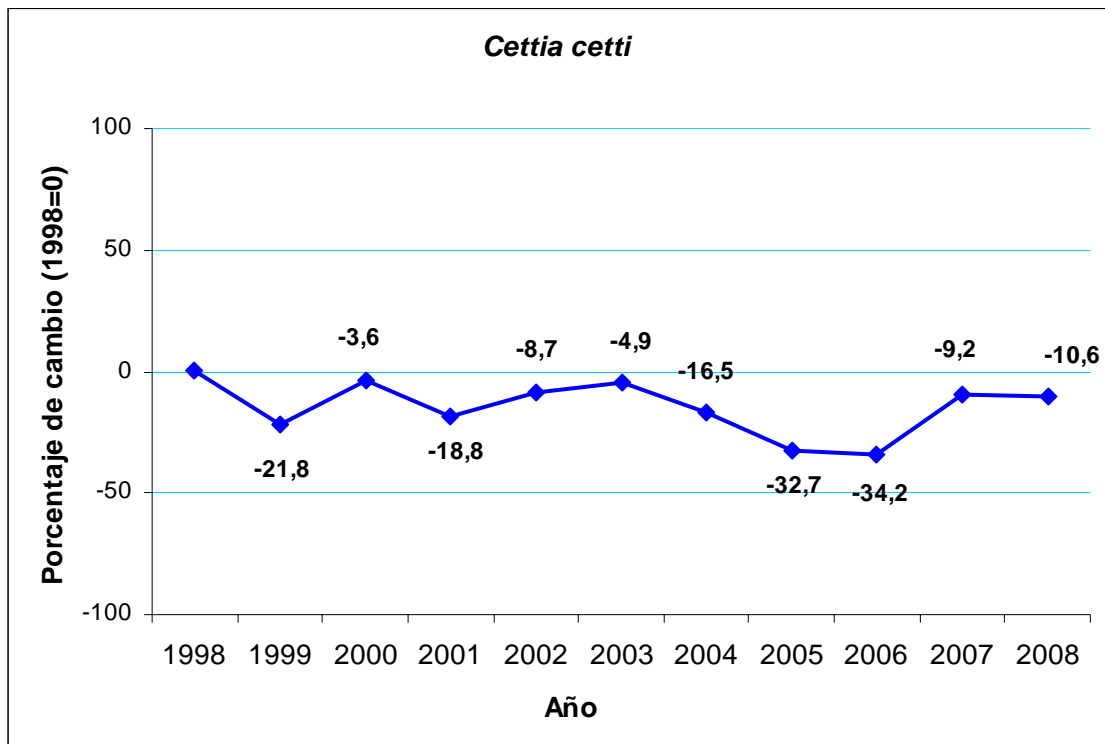
Verderón común



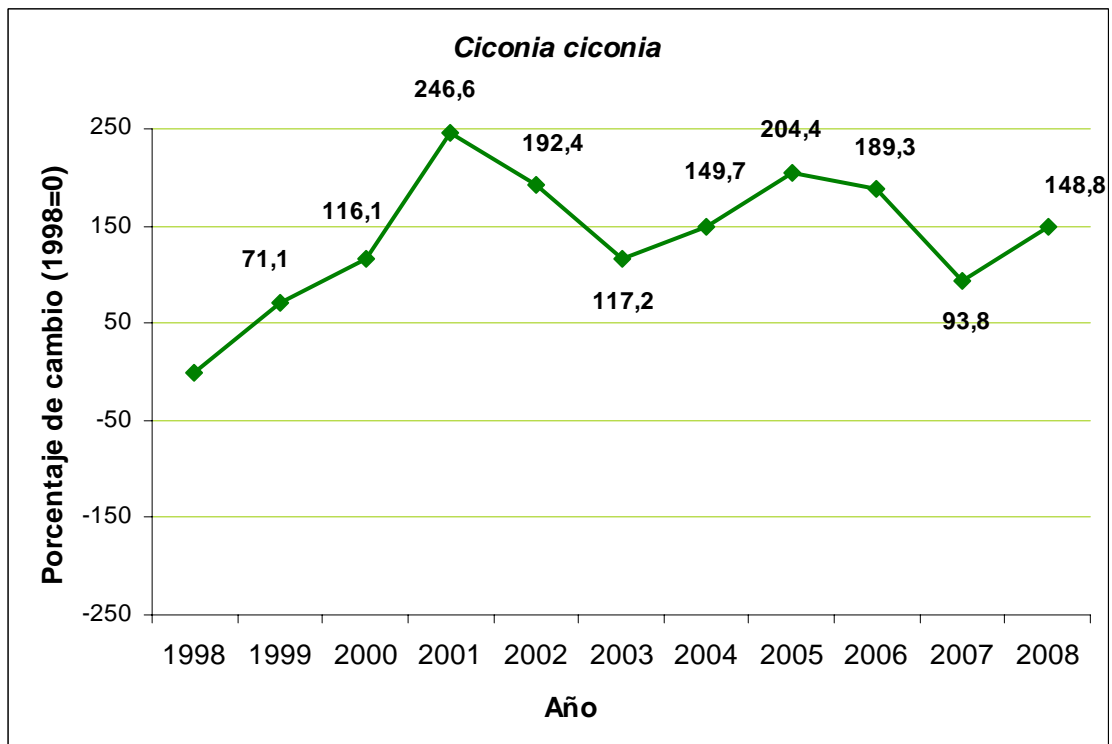
Agateador común



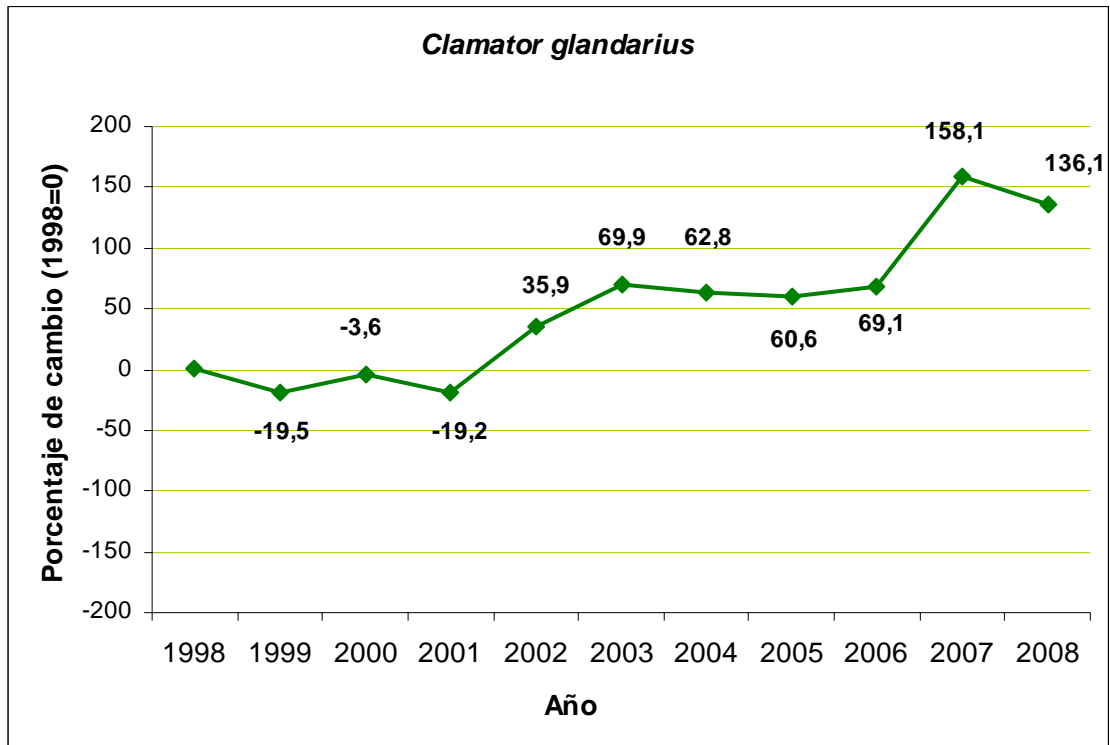
Ruiseñor bastardo



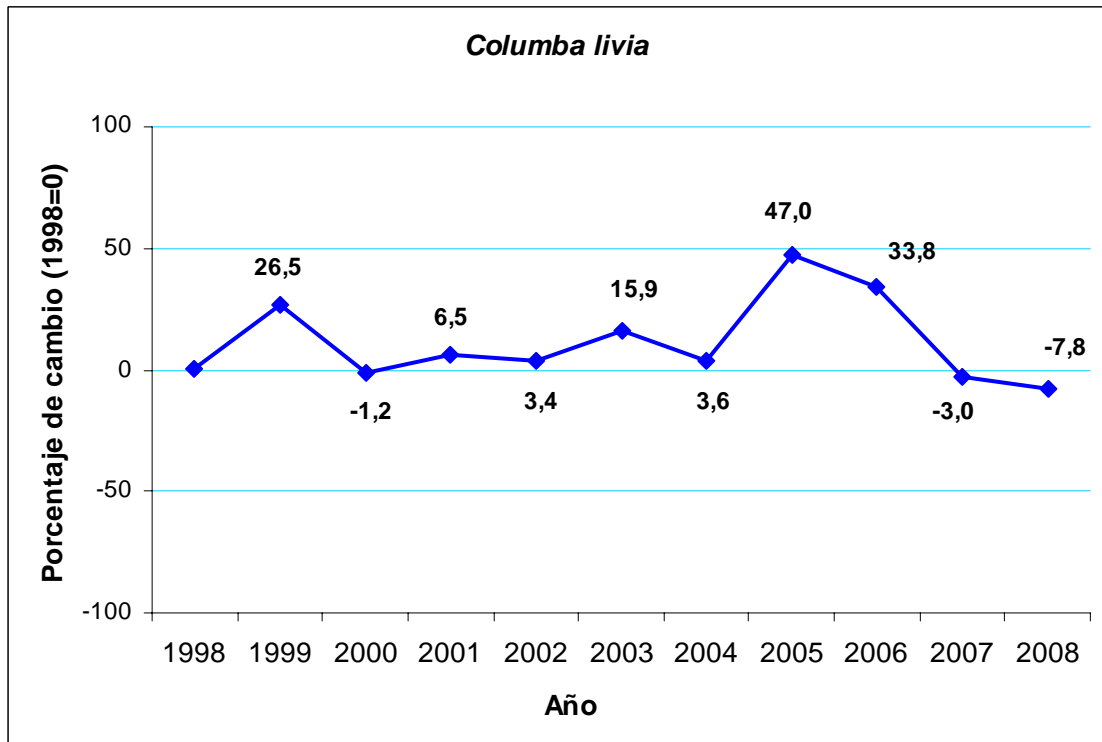
Cigüeña blanca



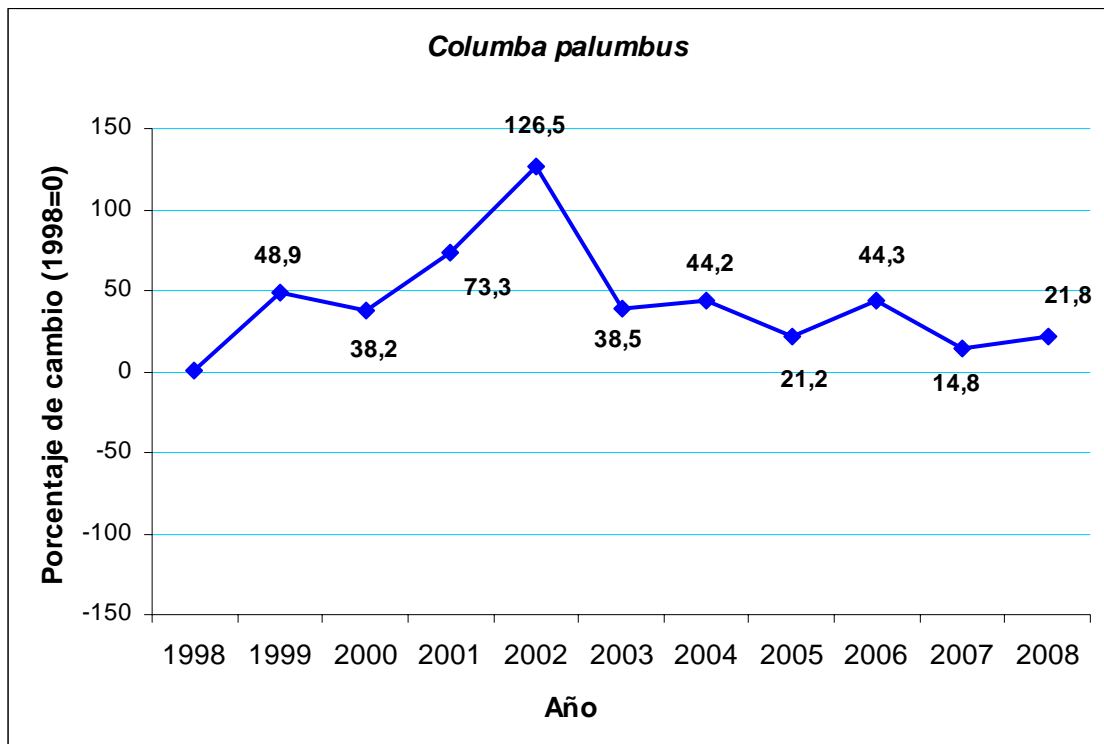
Críalo Europeo



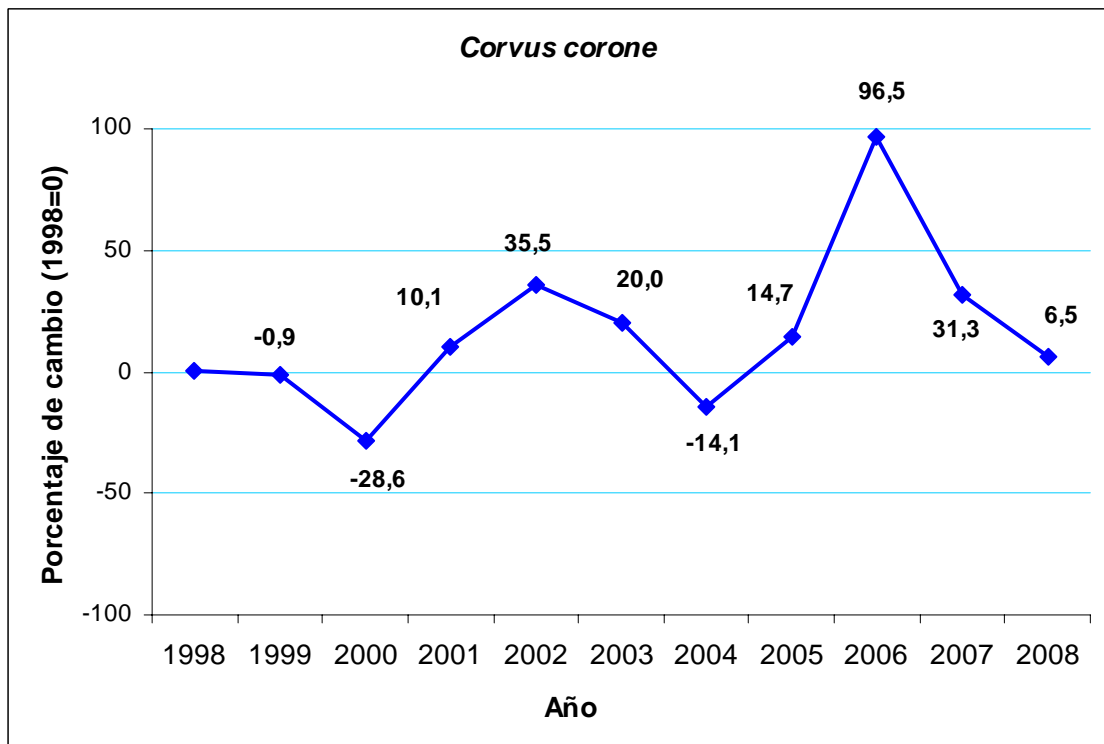
Paloma bravía



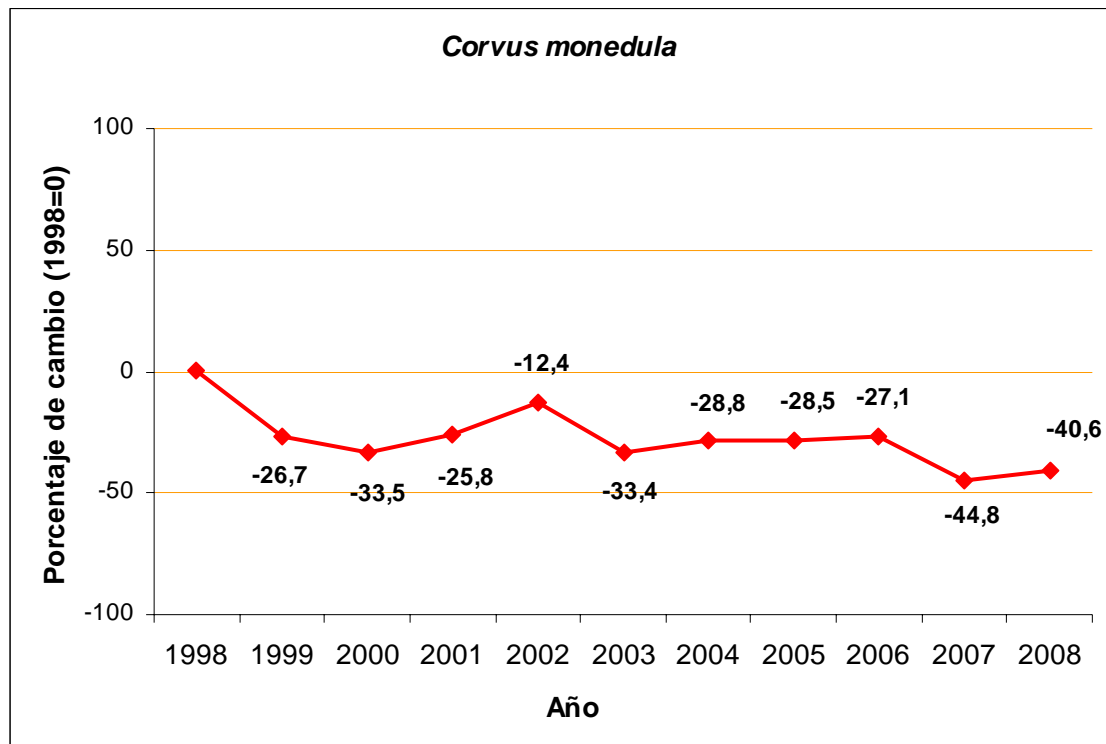
Paloma torcaz



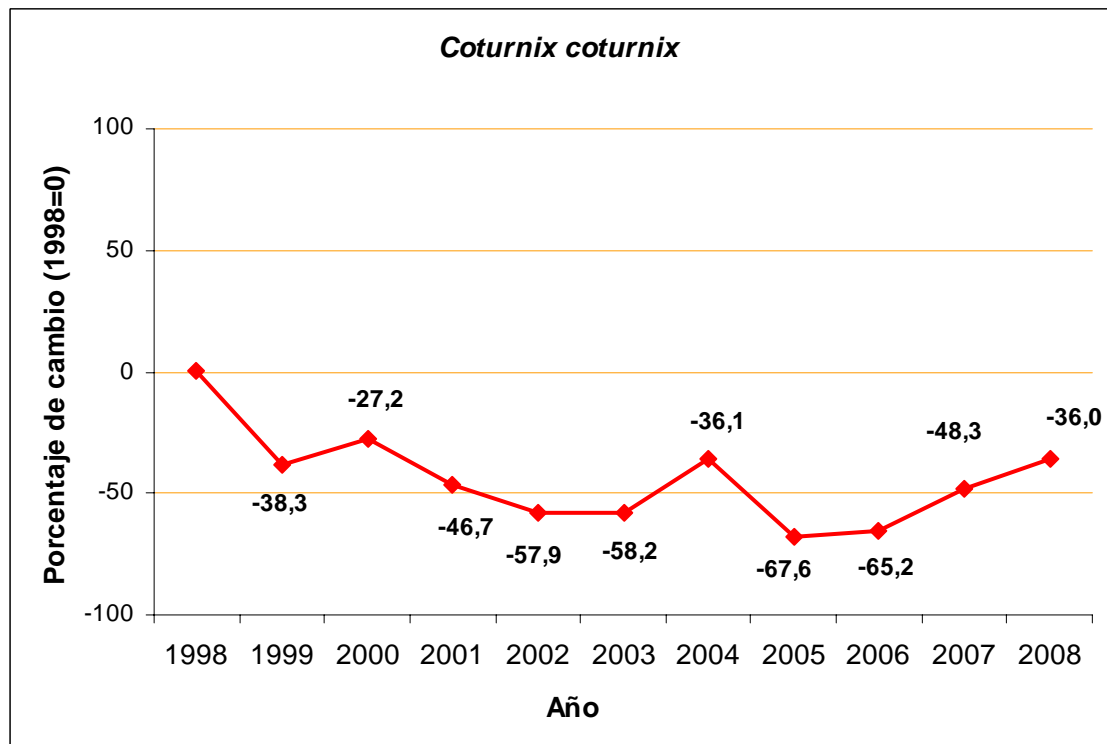
Corneja común



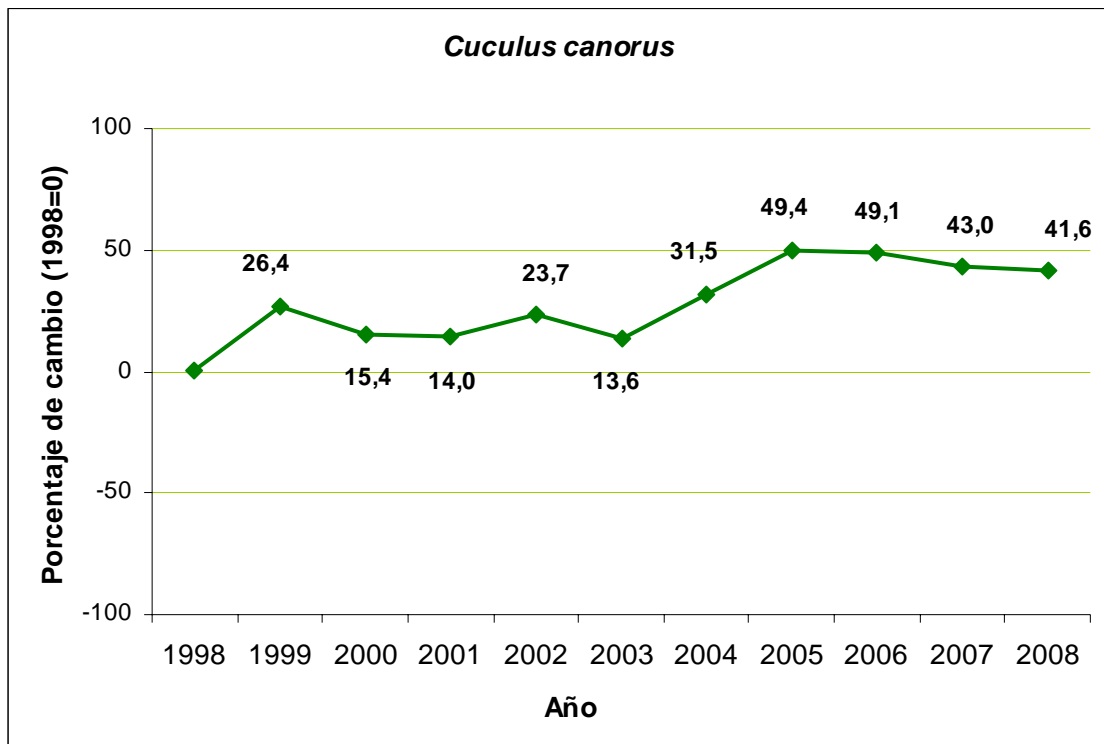
Grajilla



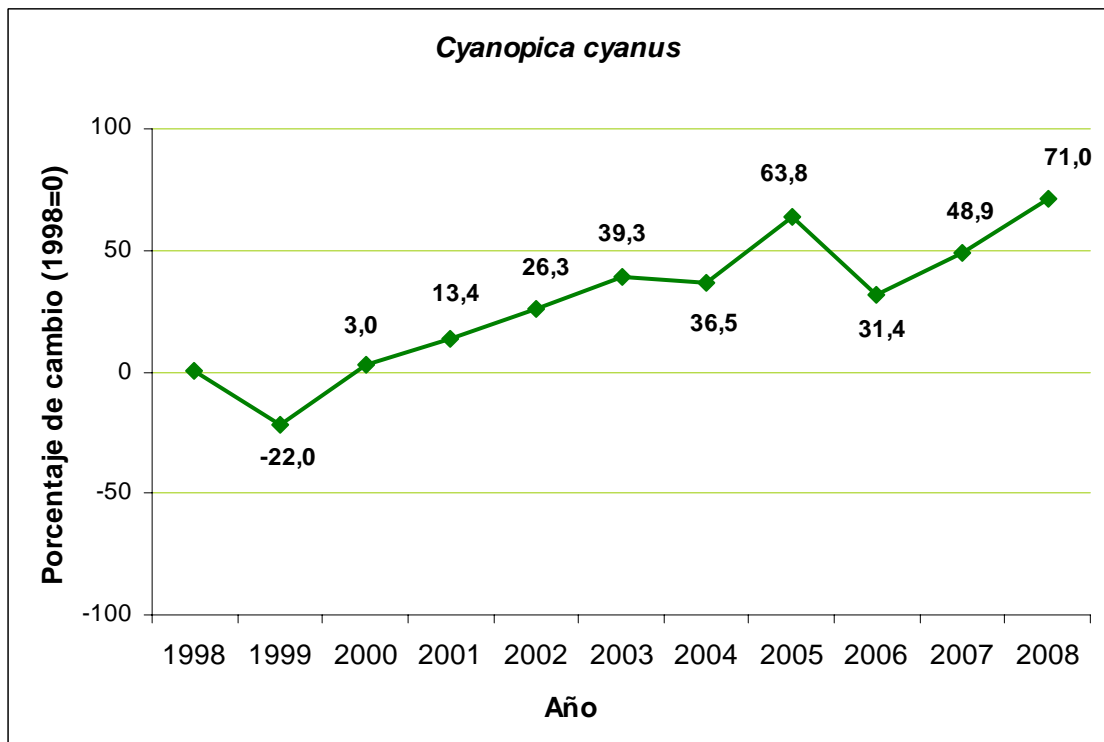
Codorniz común



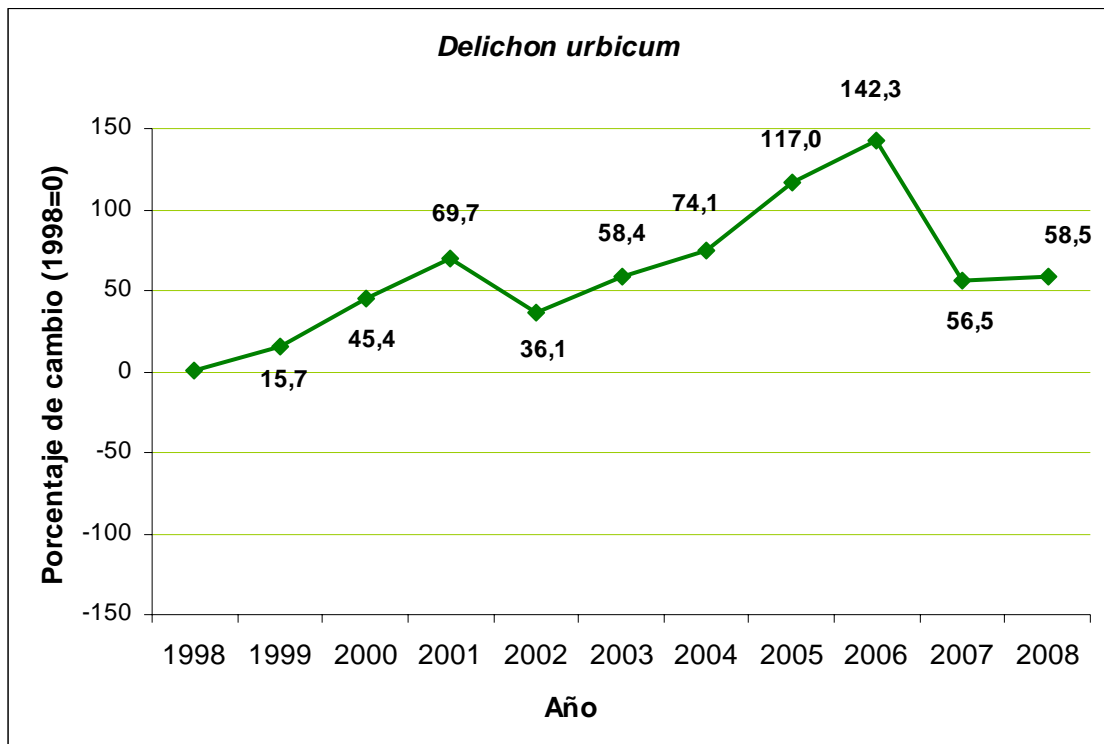
Cuco común



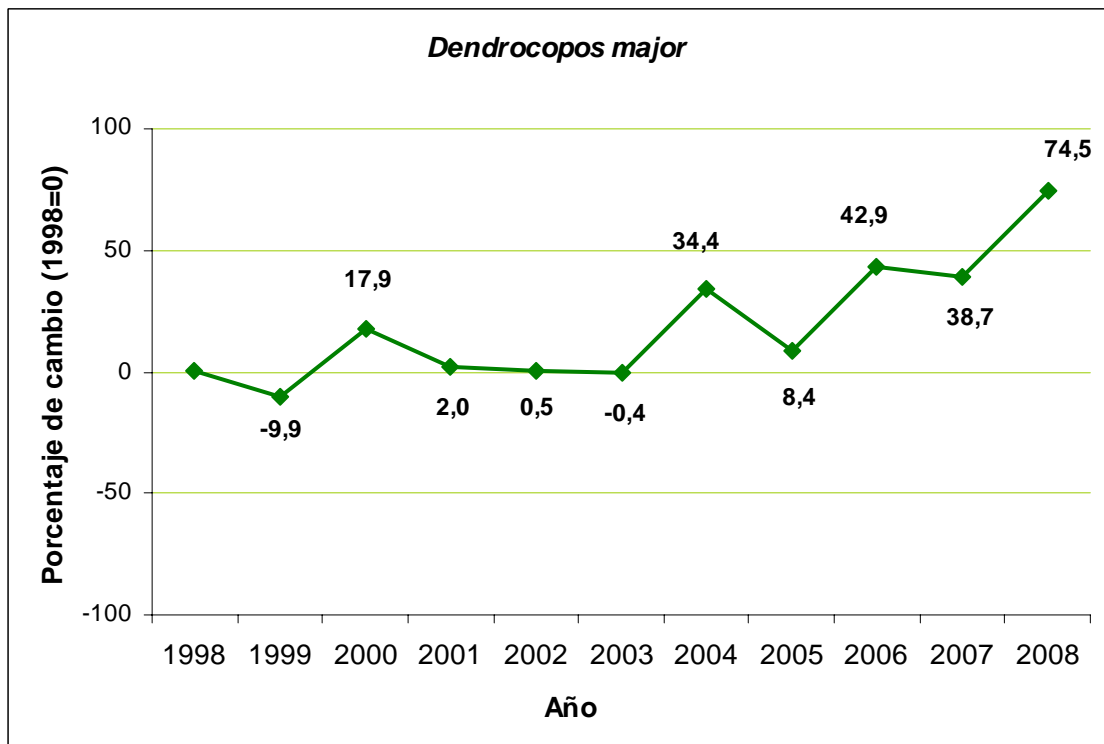
Rabilargo



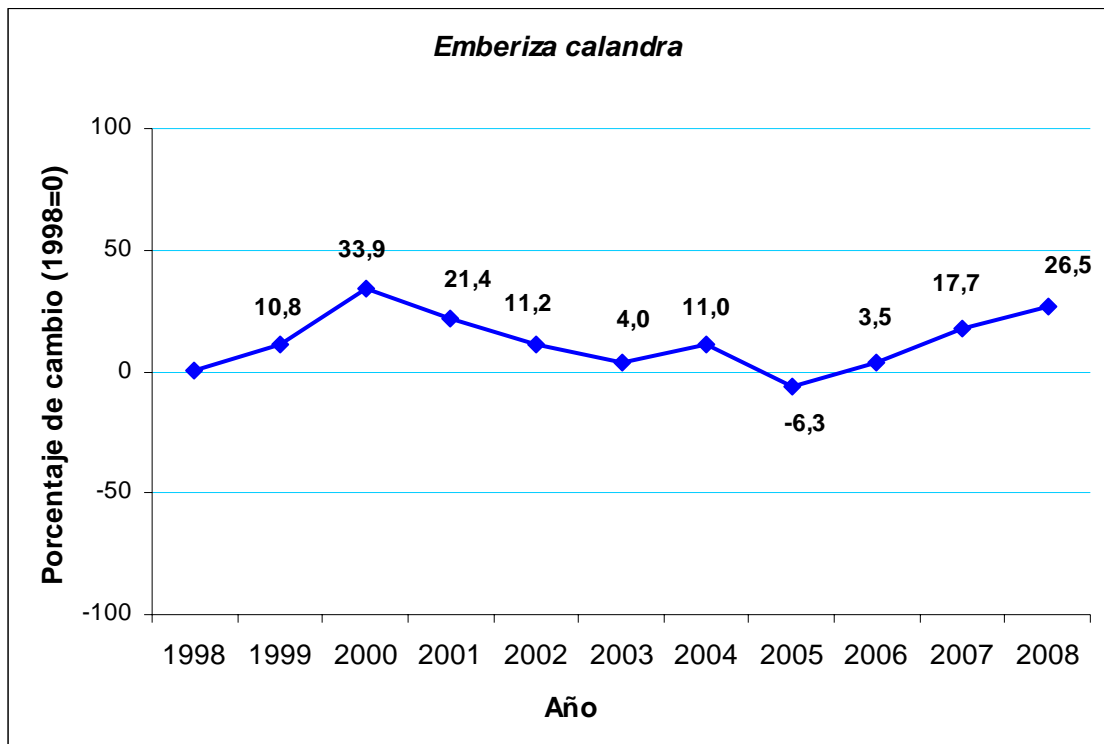
Avión común



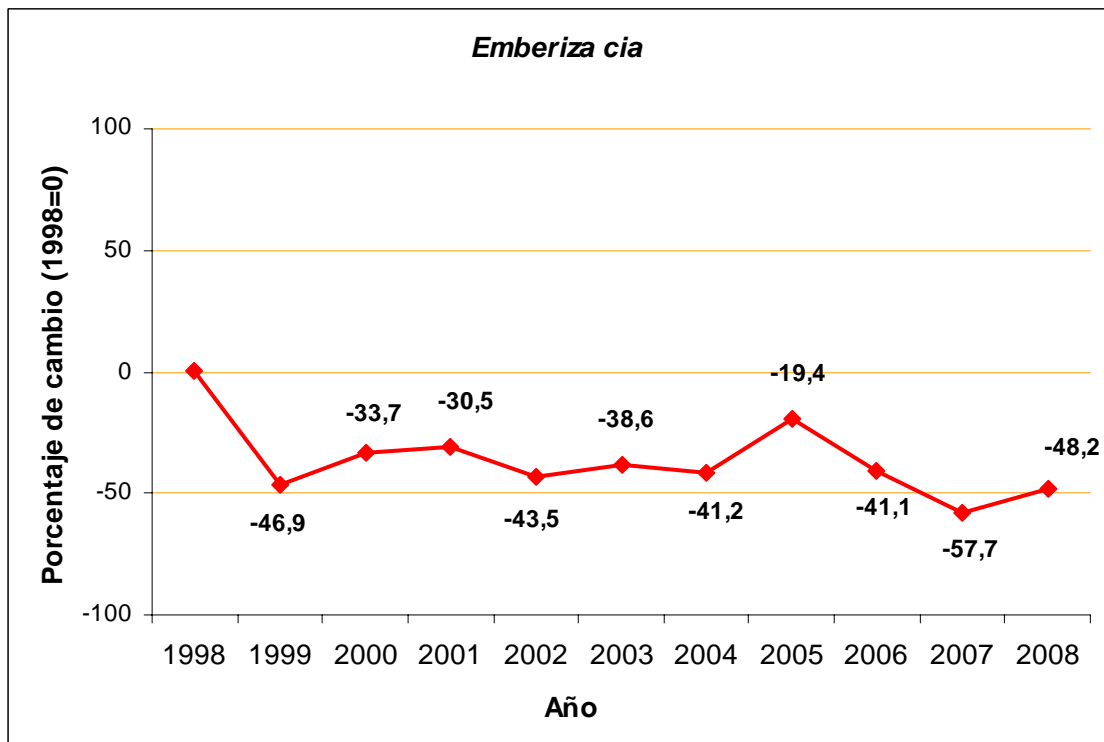
Pico picapinos



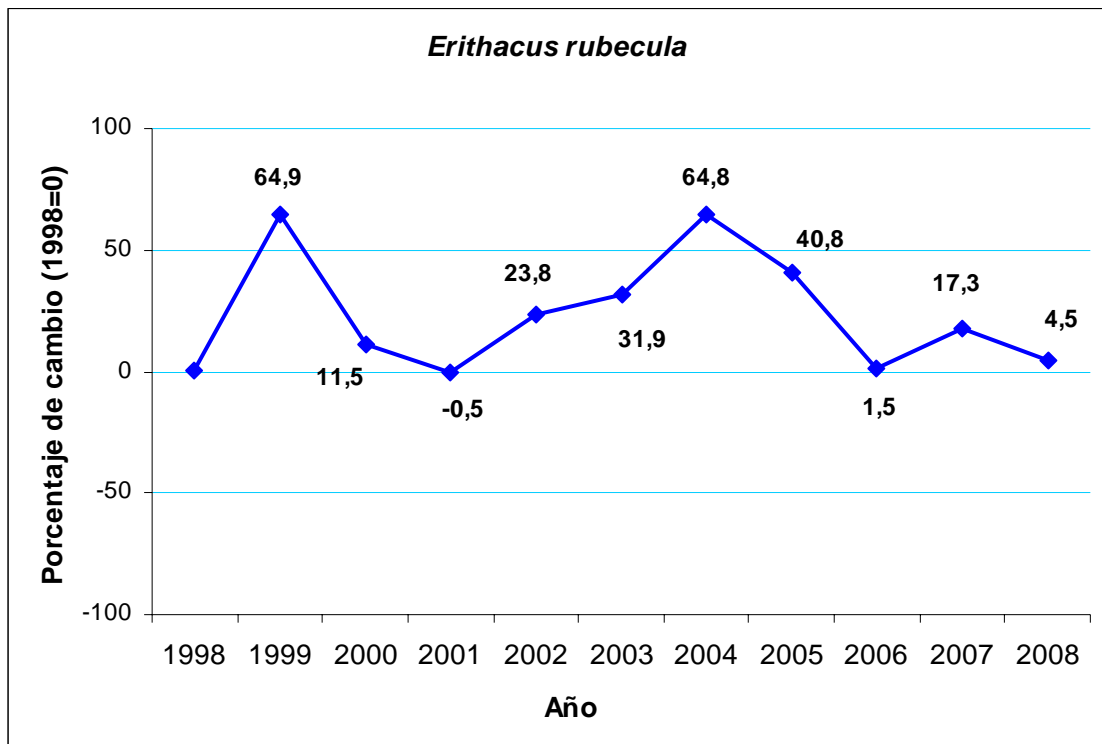
Triguero



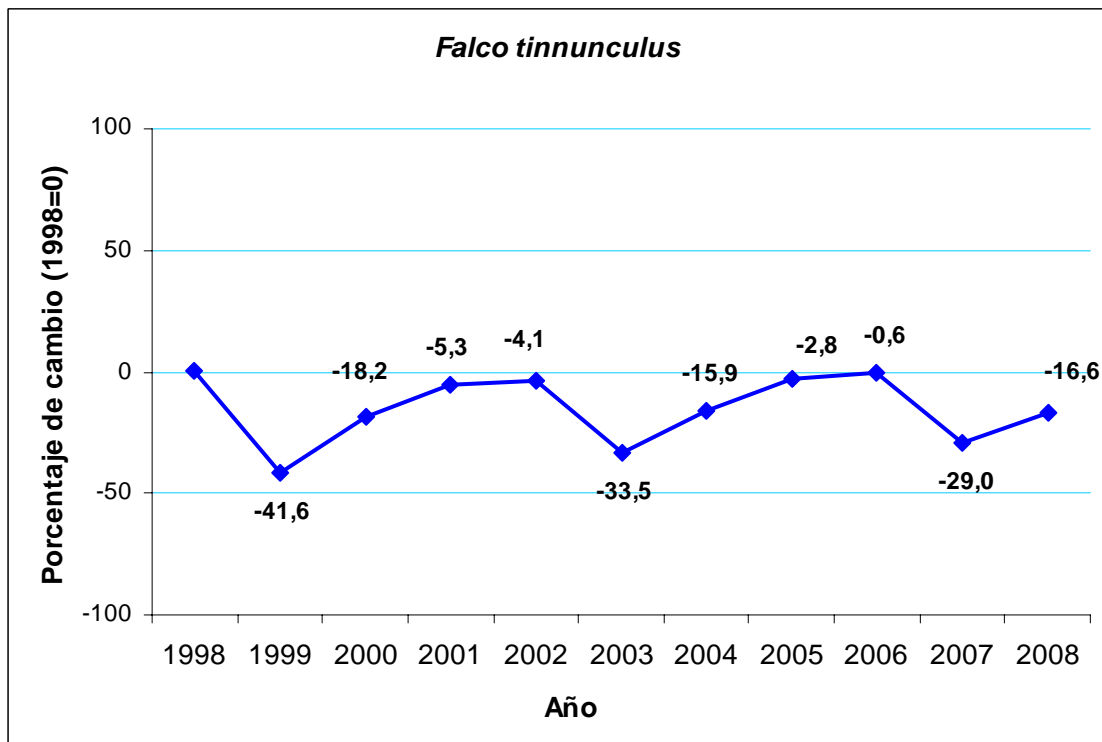
Escribano montesino



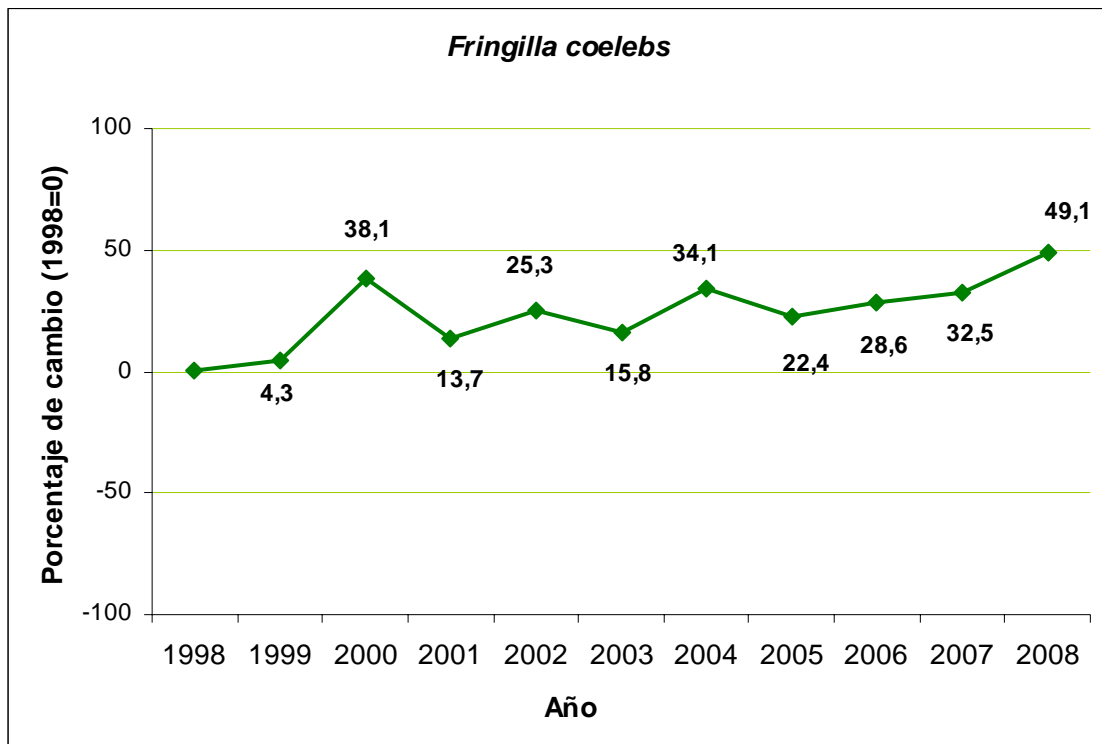
Petirrojo europeo



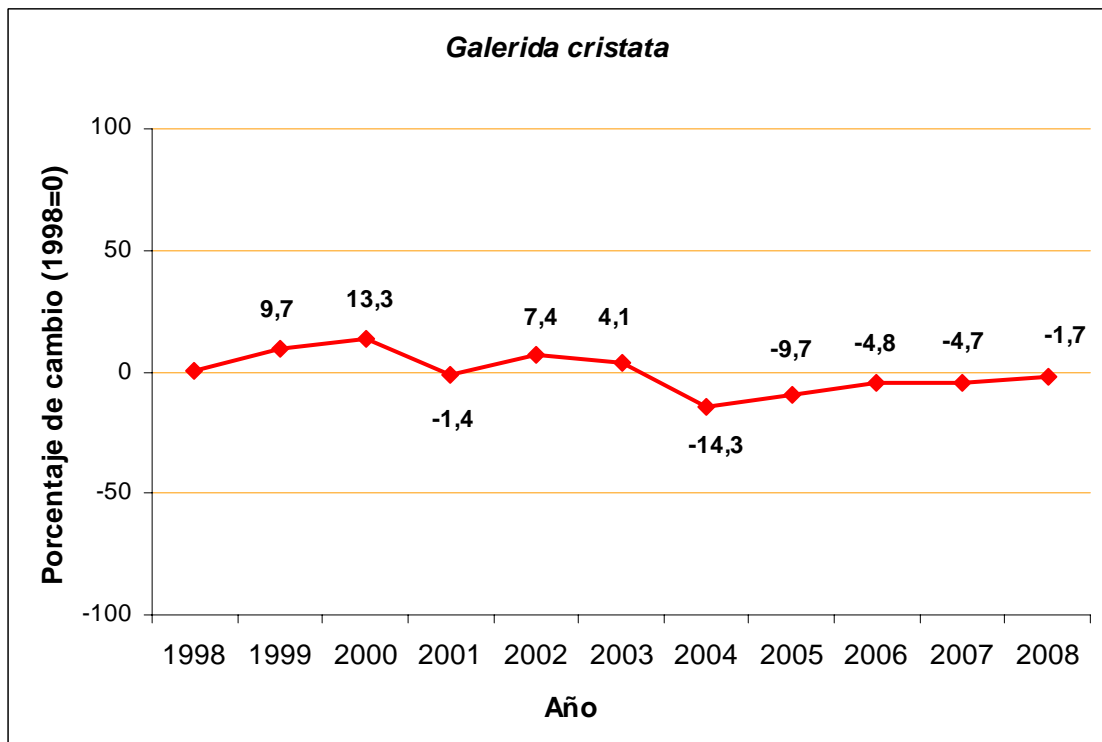
Cernícalo vulgar



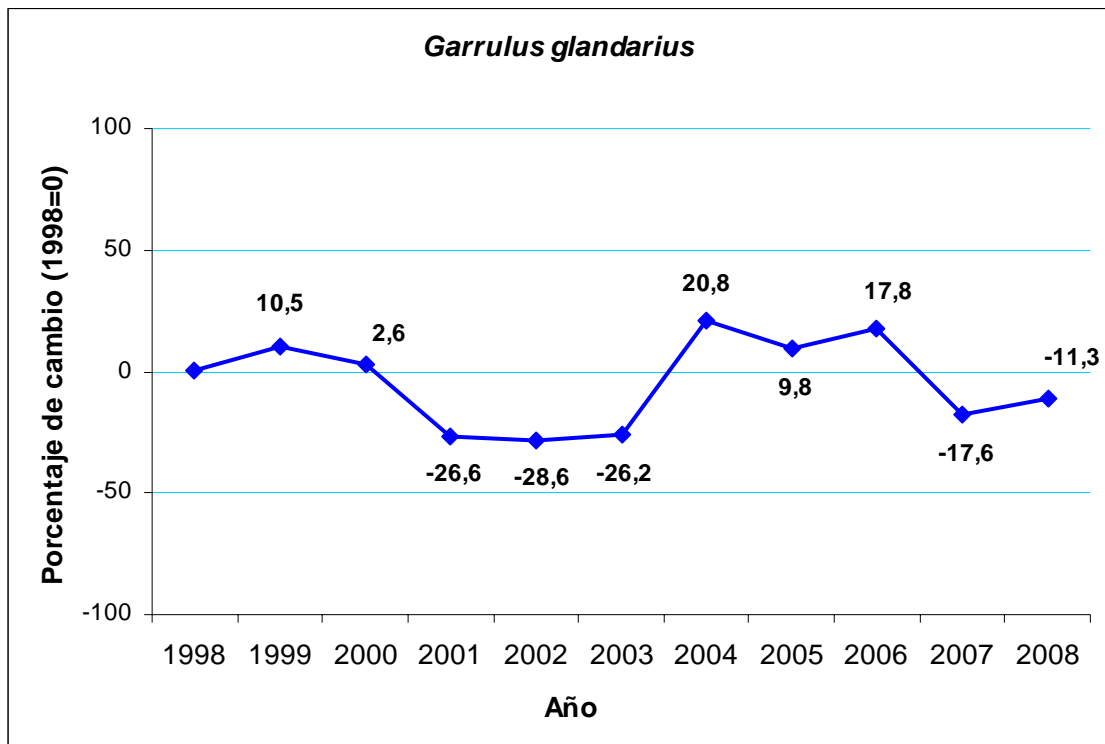
Pinzón vulgar



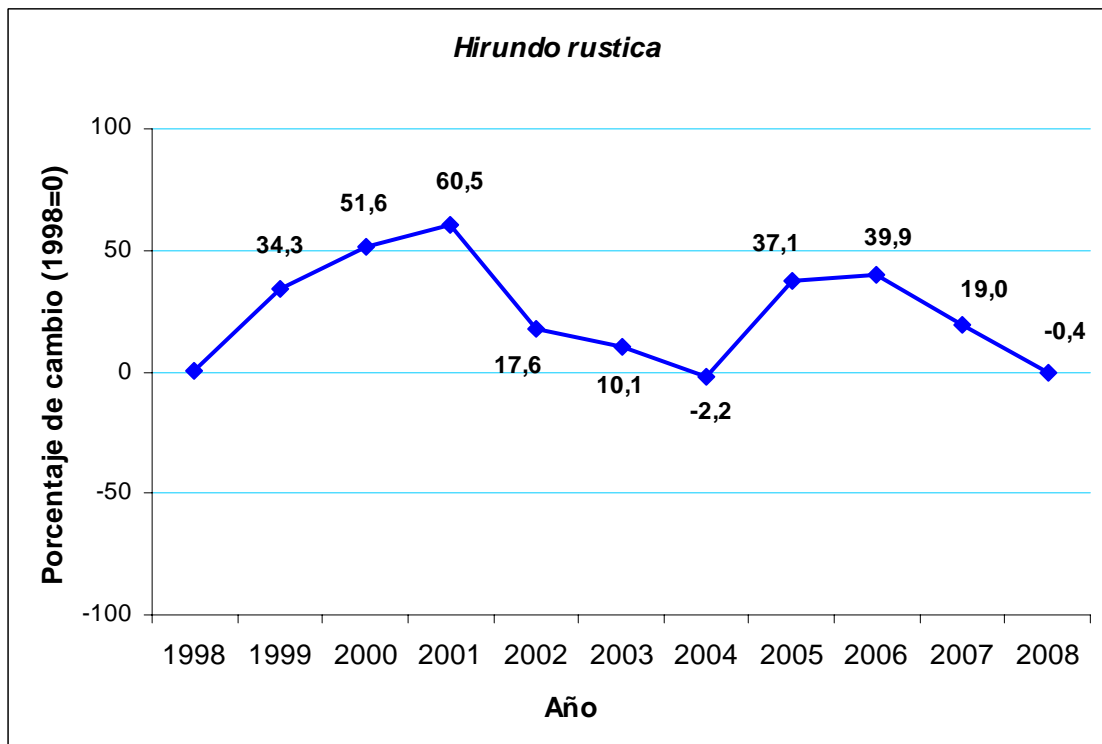
Cogujada común



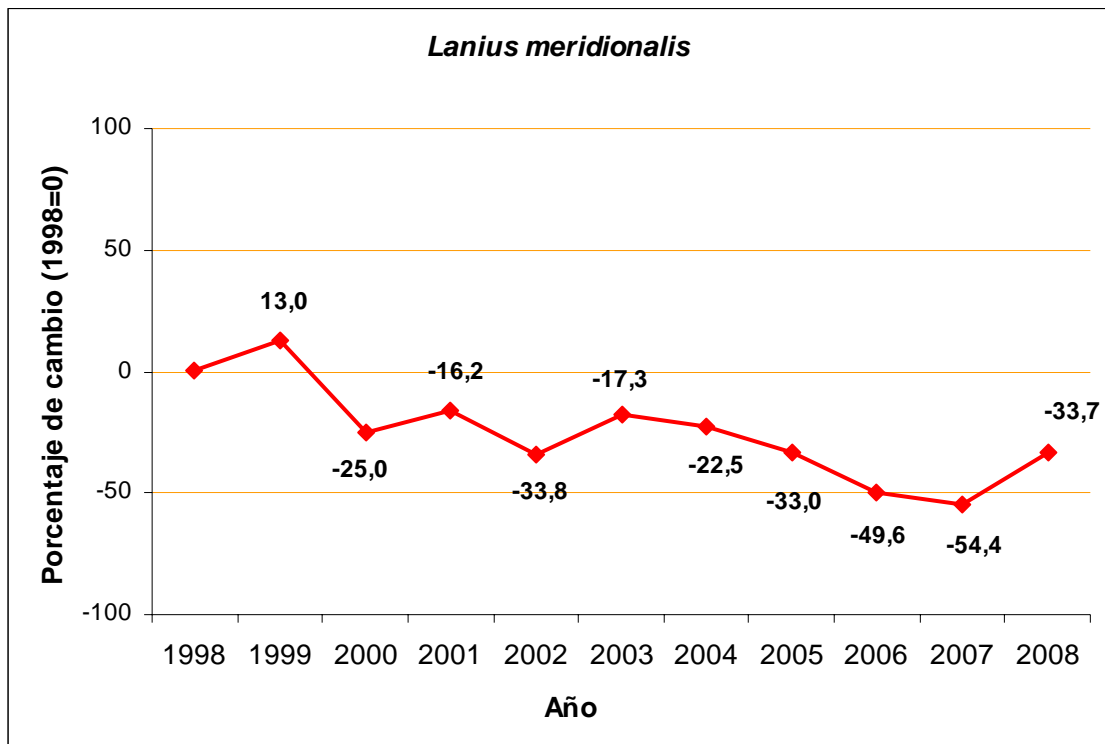
Arrendajo



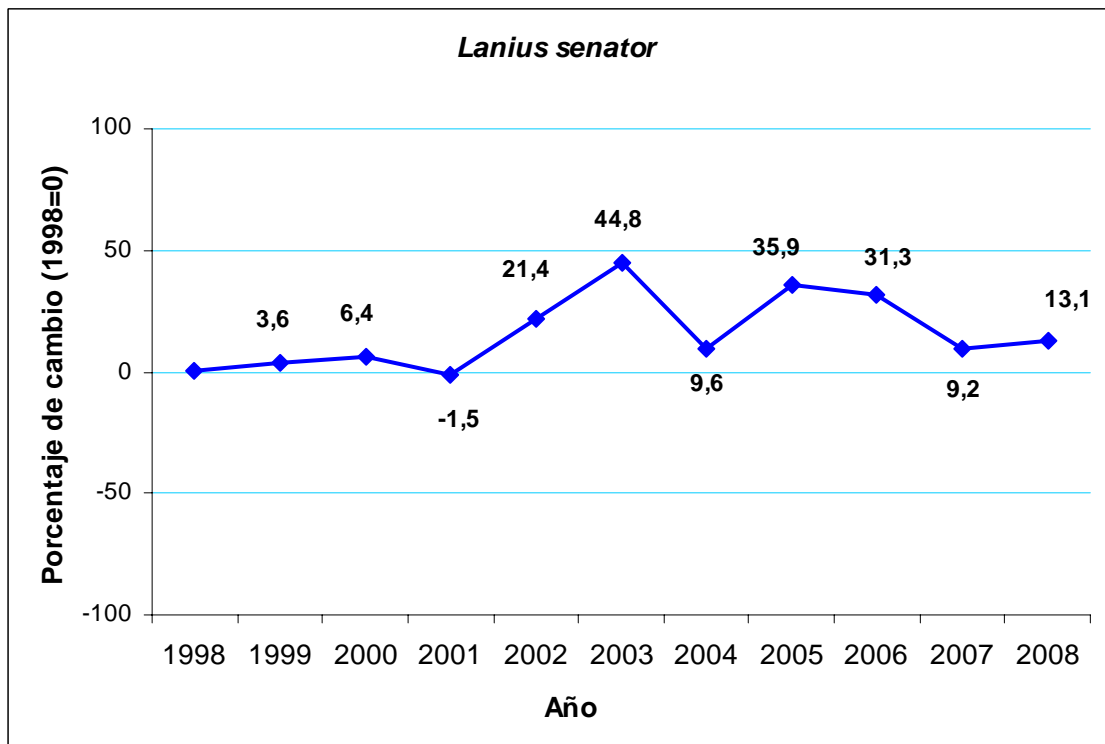
Golondrina común



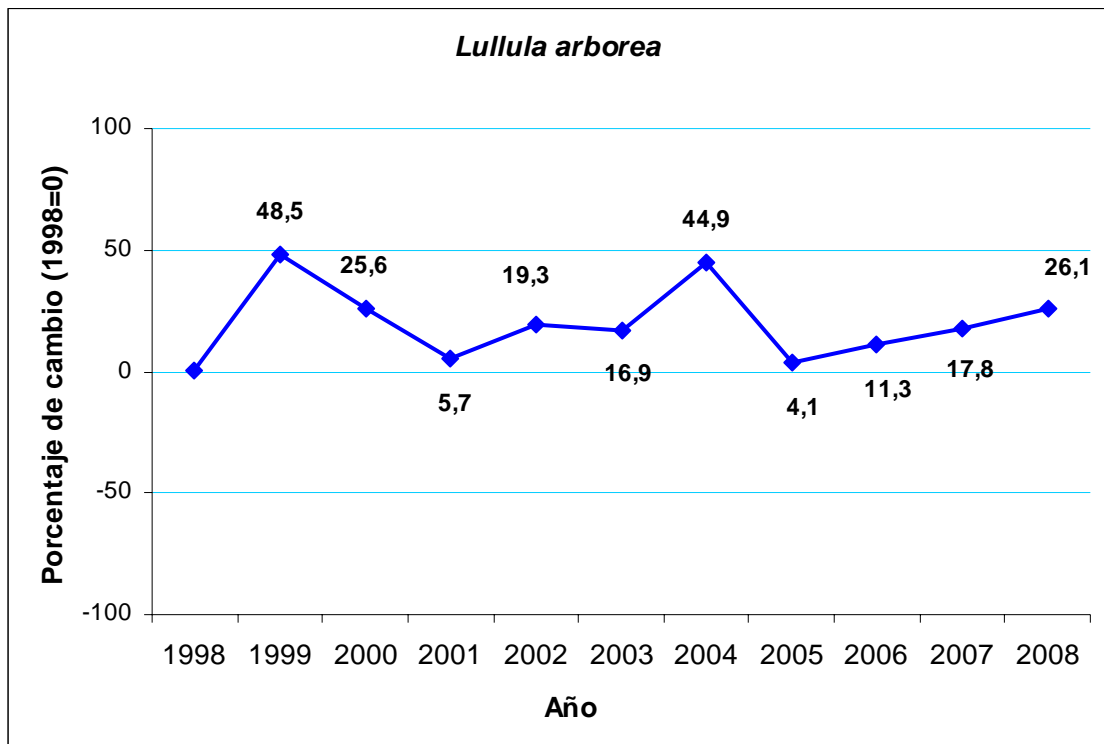
Alcaudón real



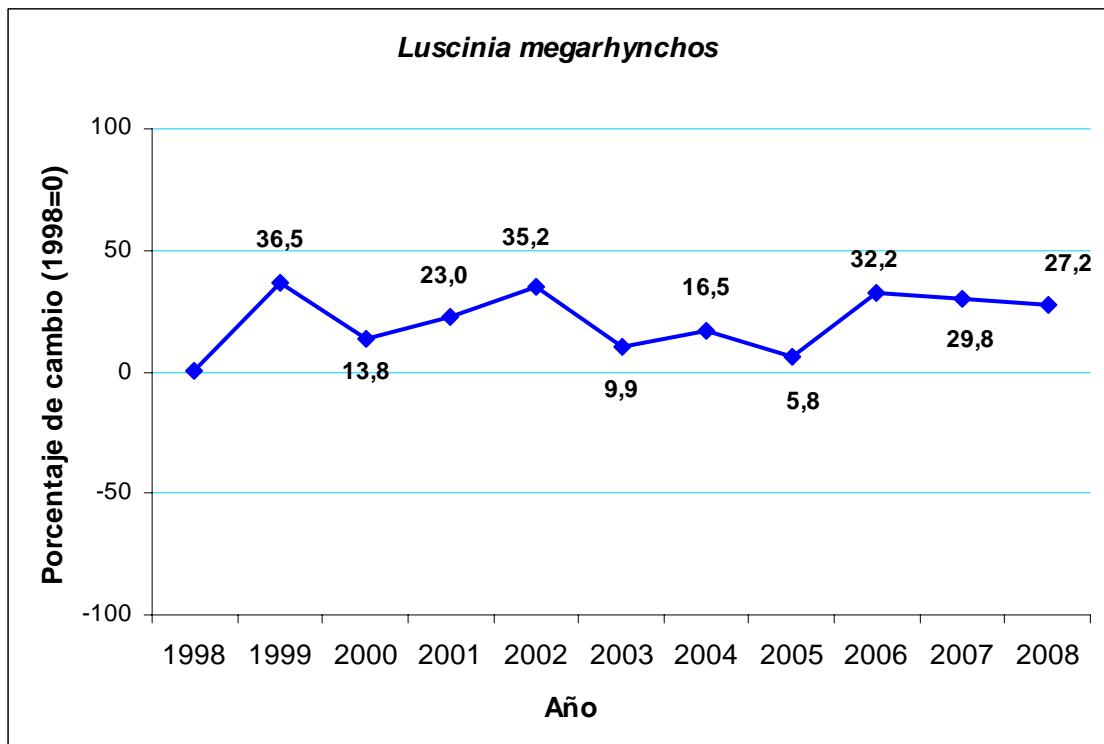
Alcaudón común



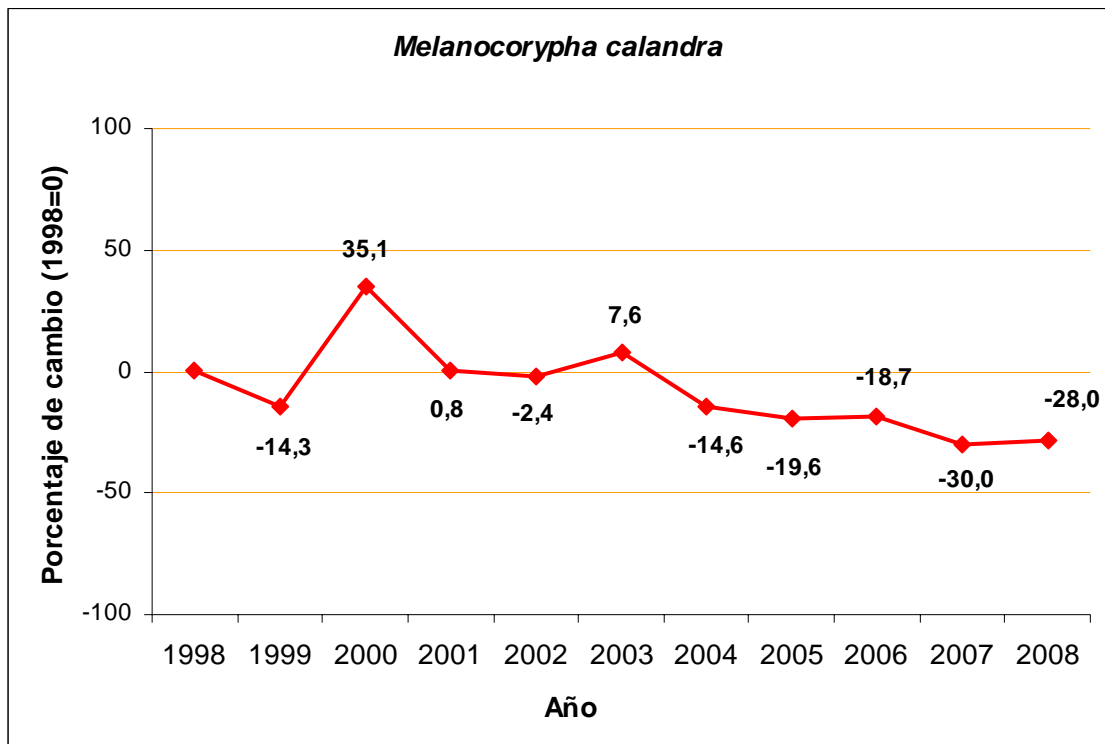
Totovía



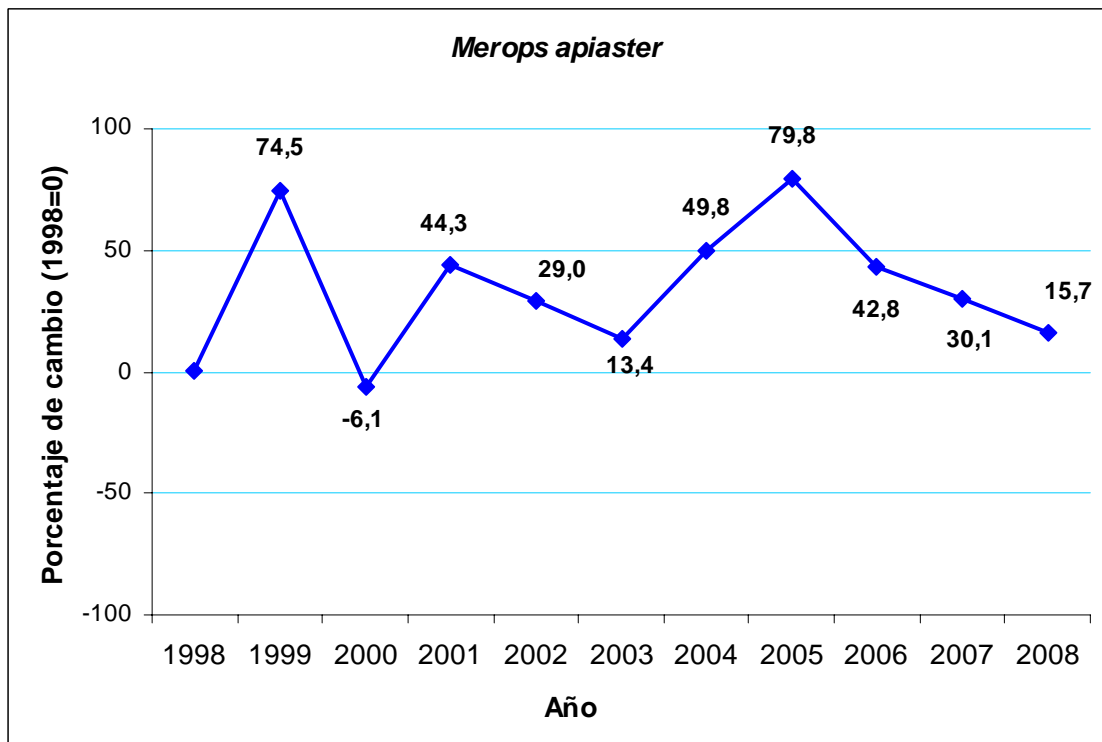
Ruiseñor común



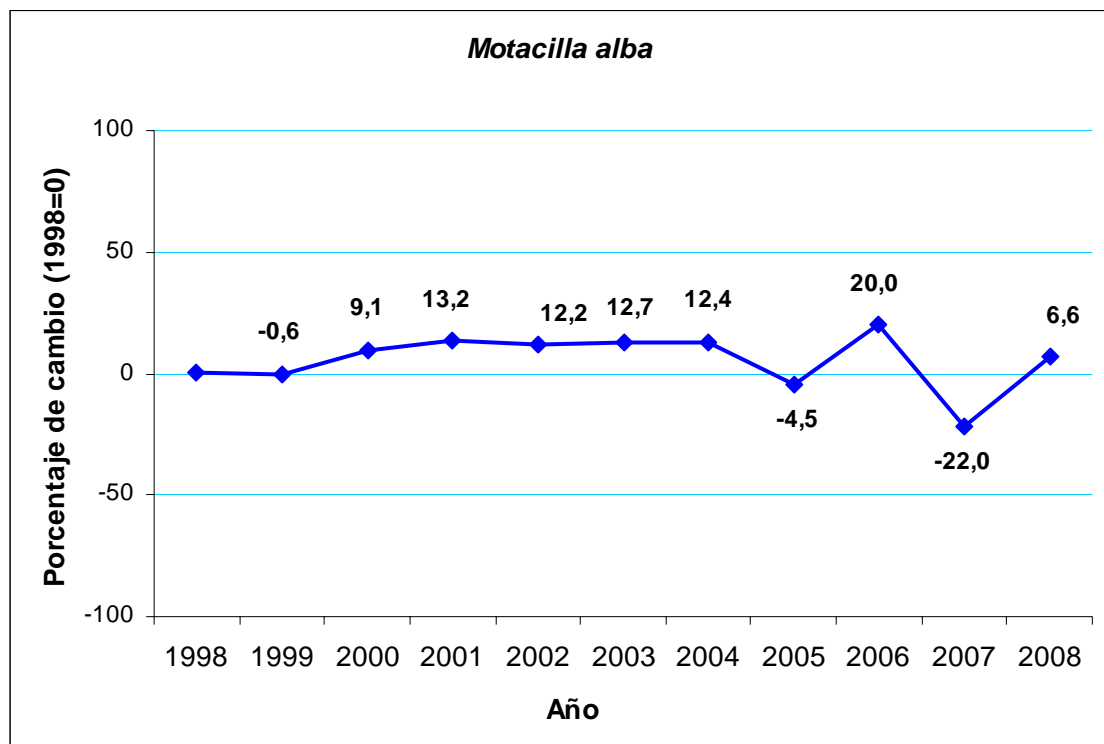
Calandria común



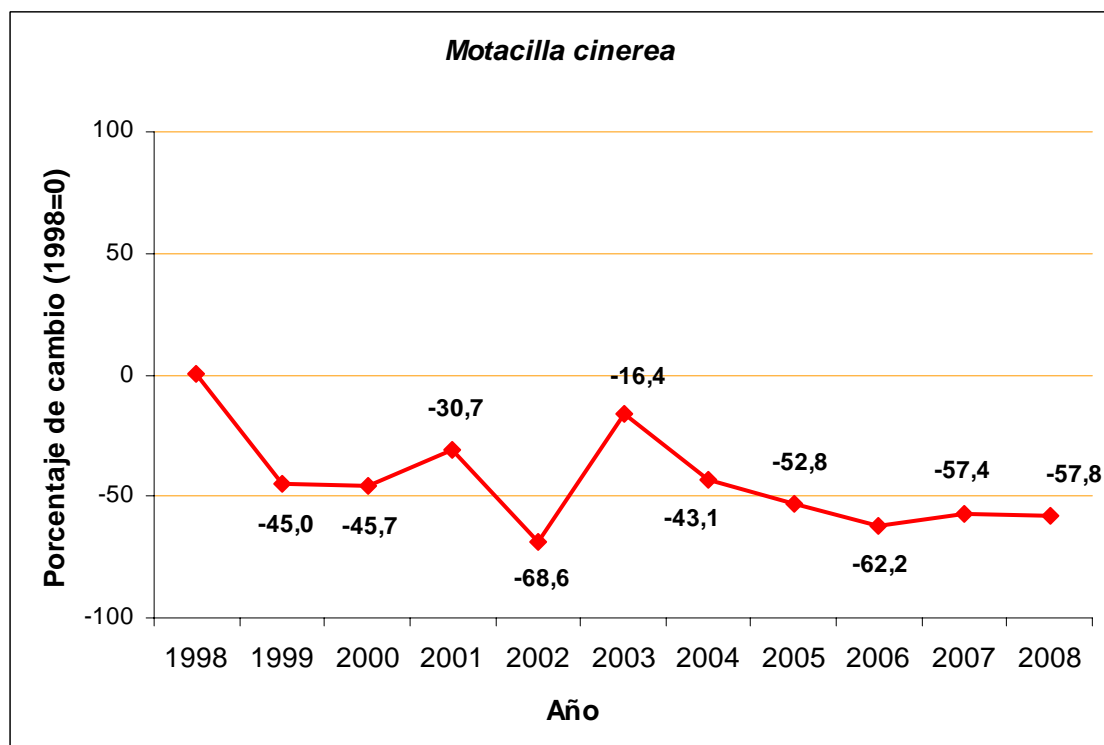
Abejaruco europeo



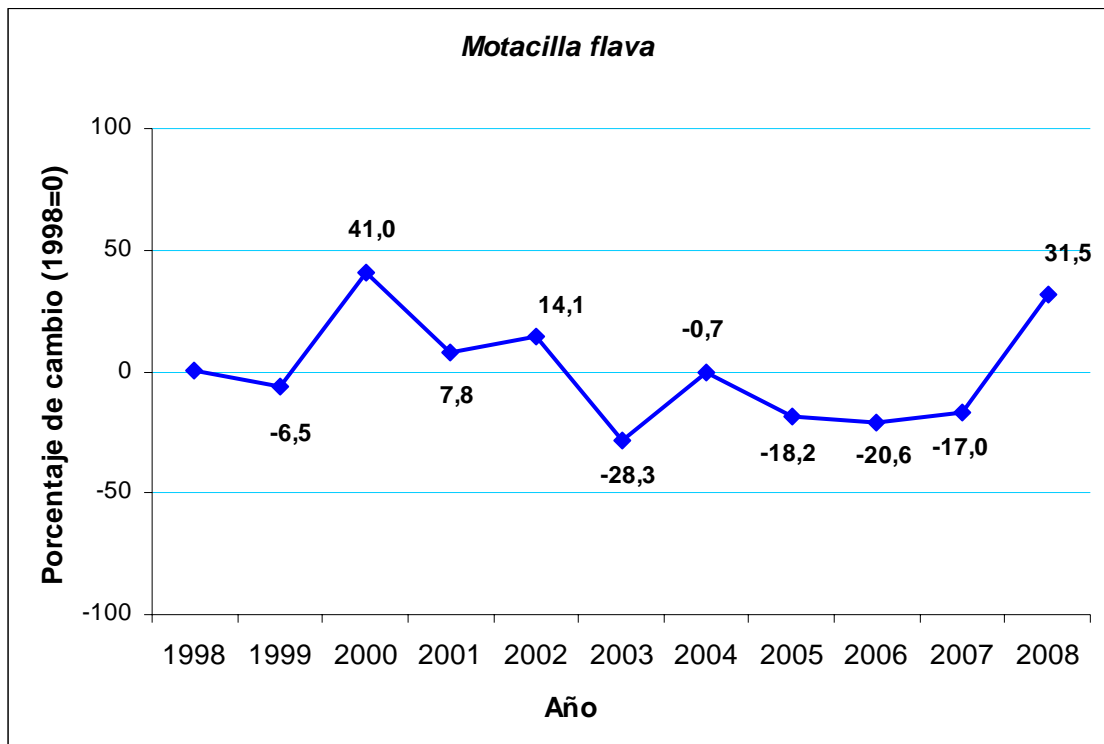
Lavandera blanca



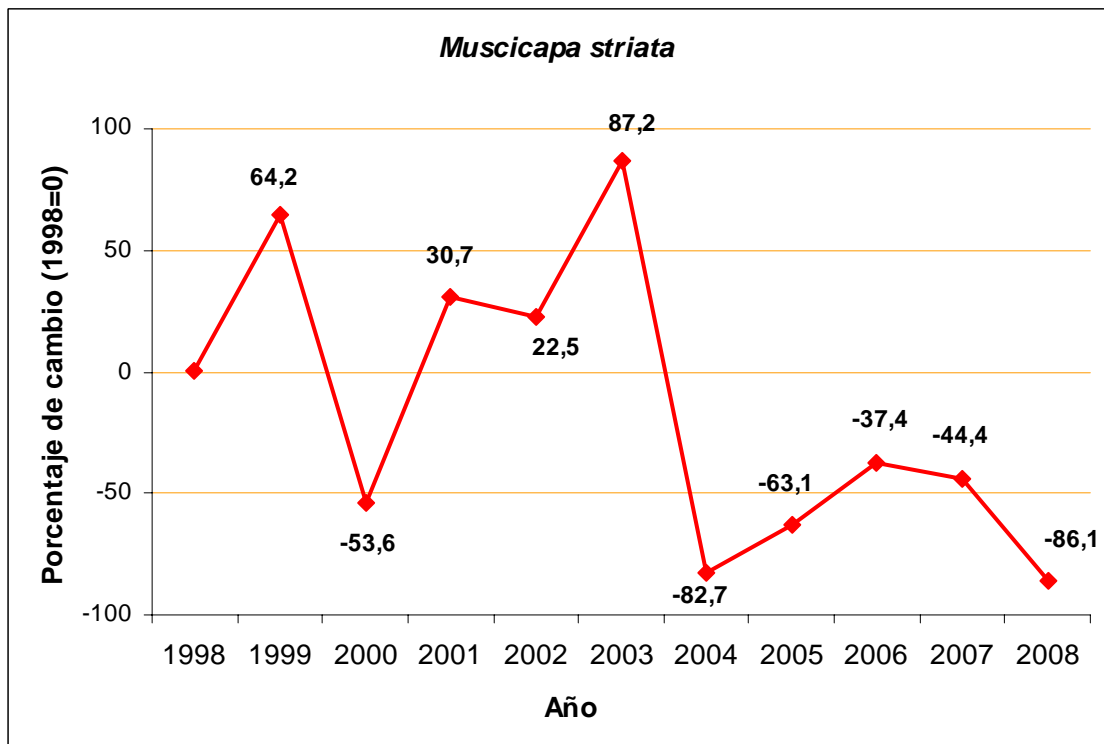
Lavandera cascadeña



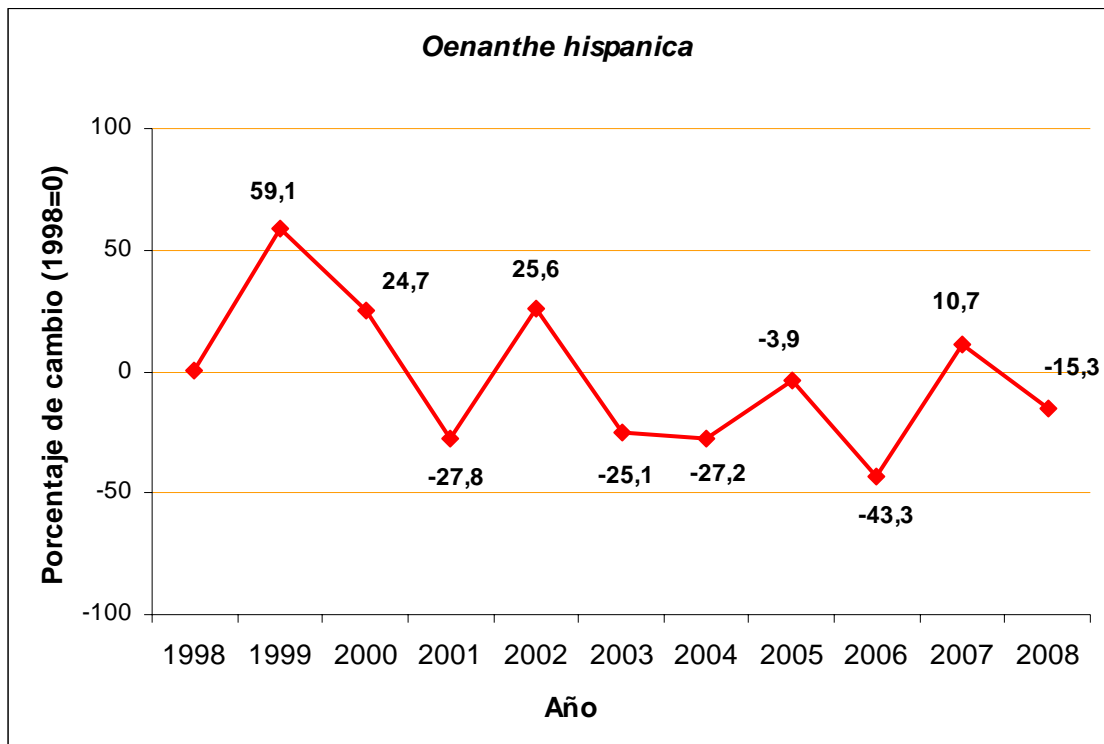
Lavandera boyera



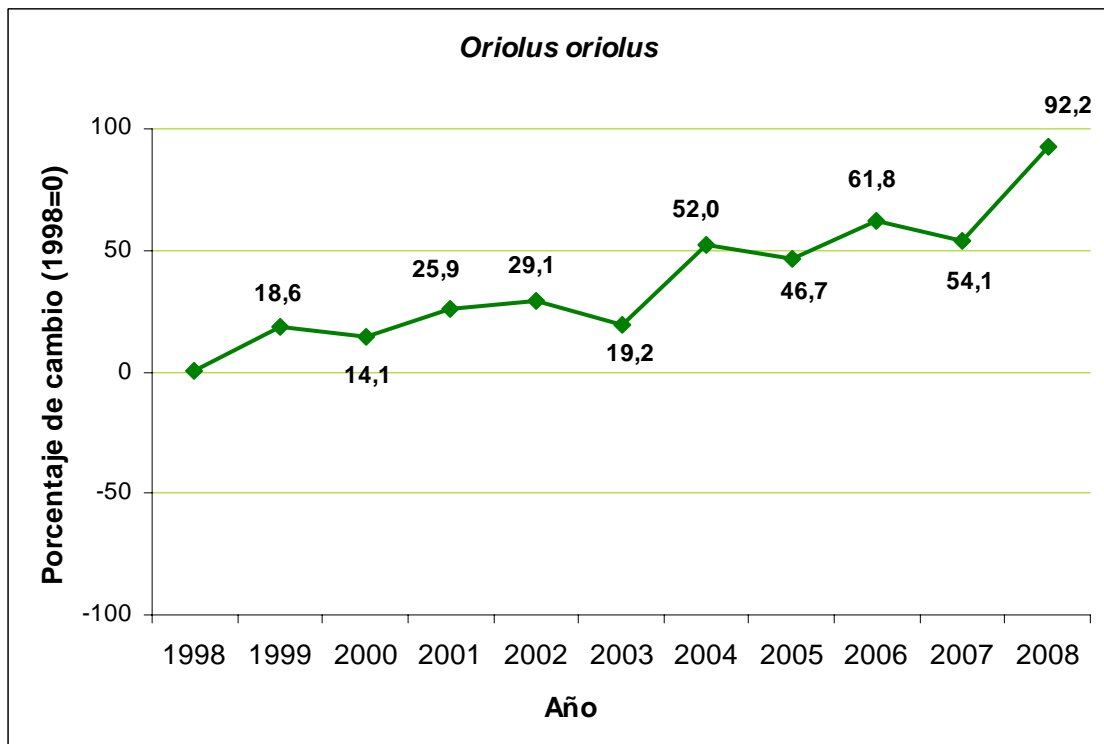
Papamoscas cerrojillo



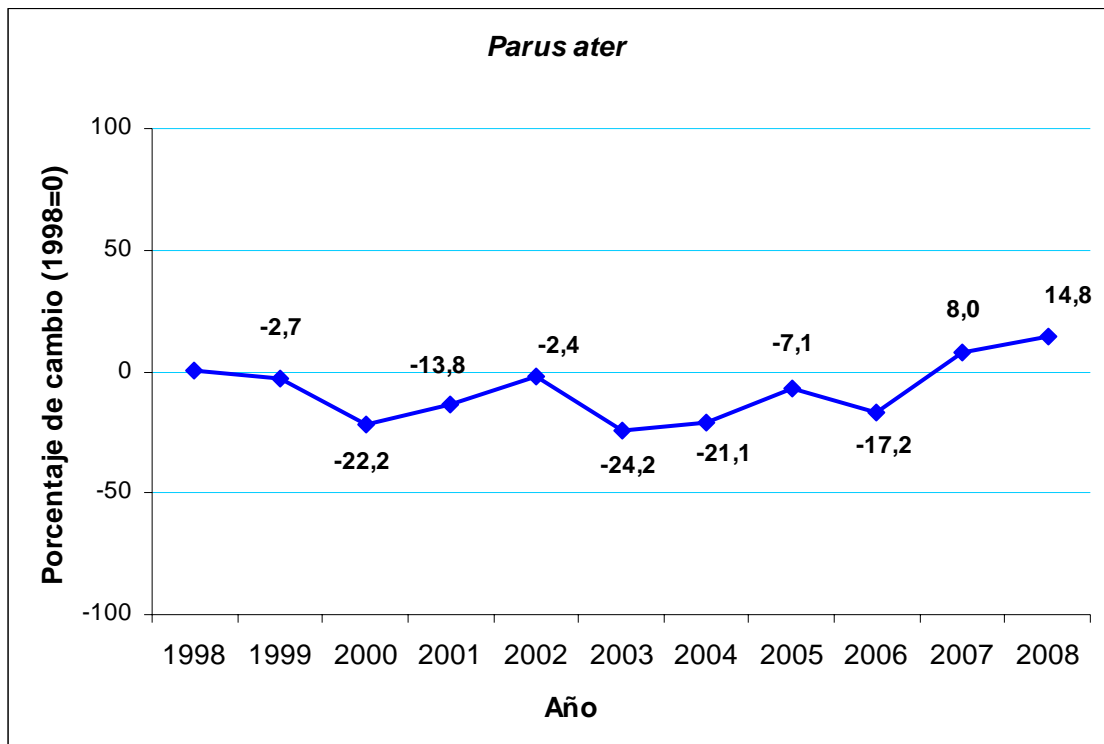
Collalba rubia



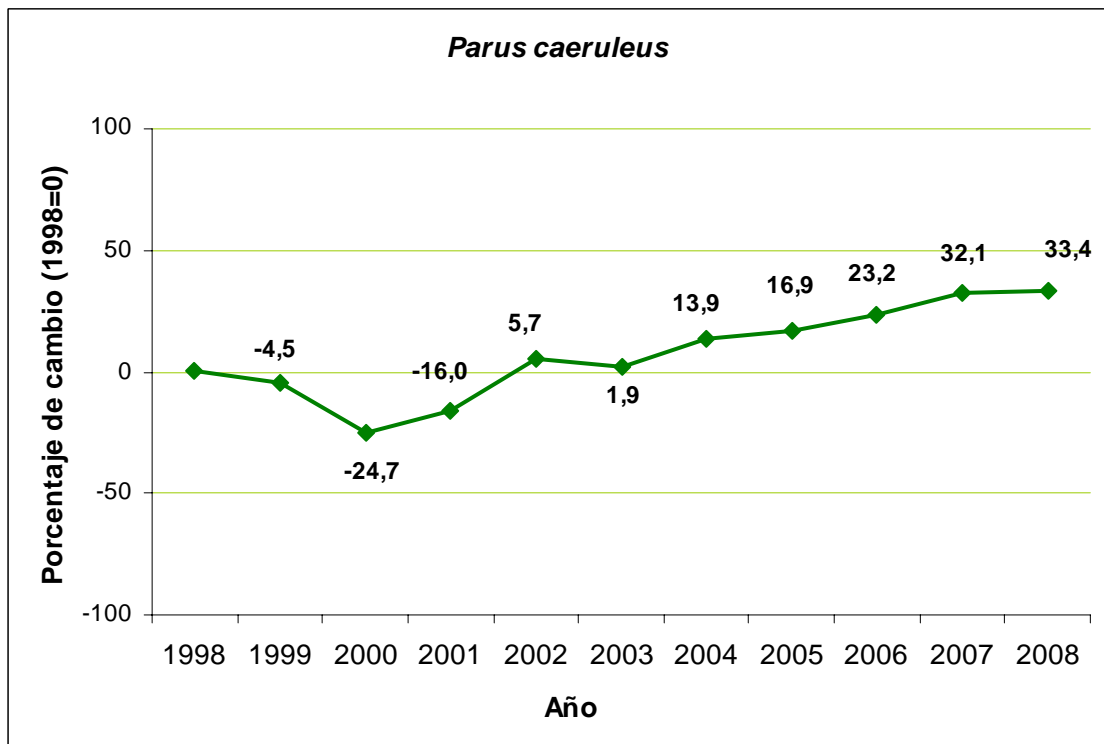
Oropéndola



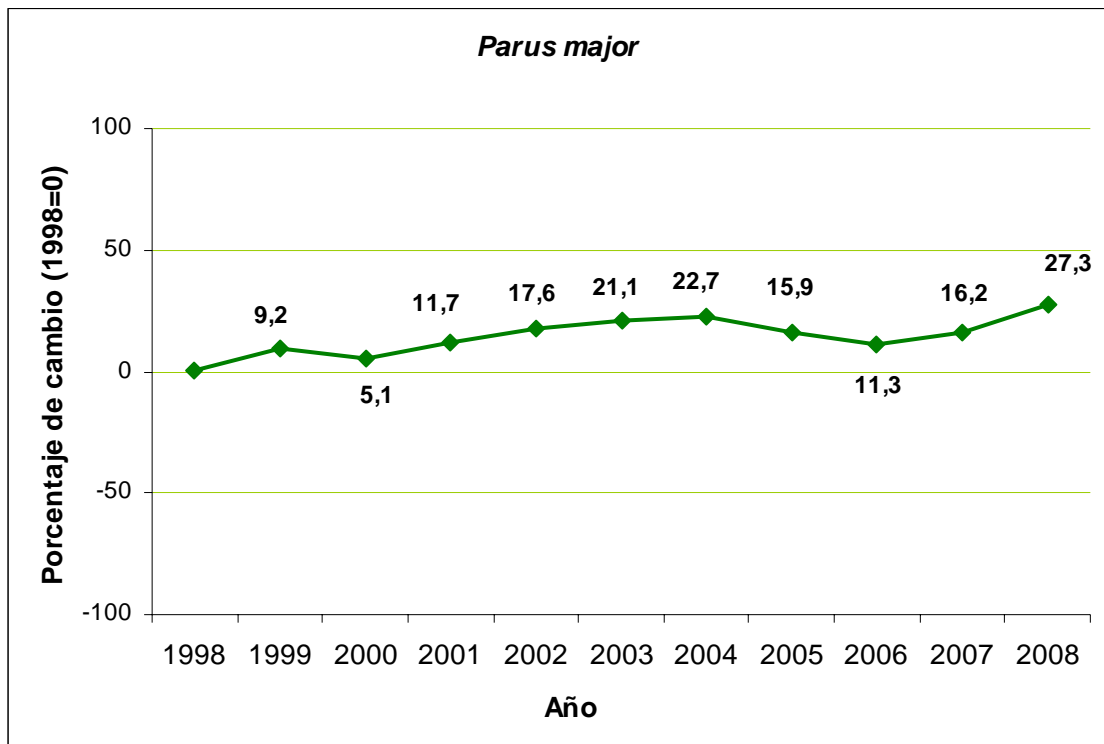
Carbonero garrapinos



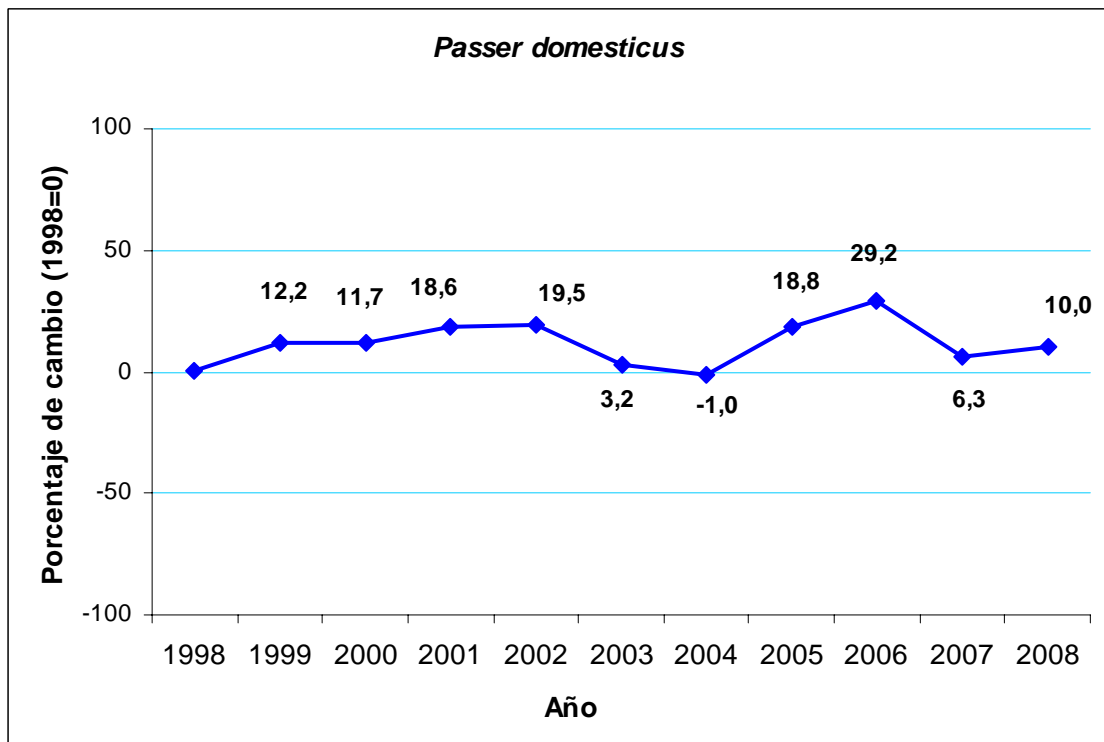
Herrerillo común



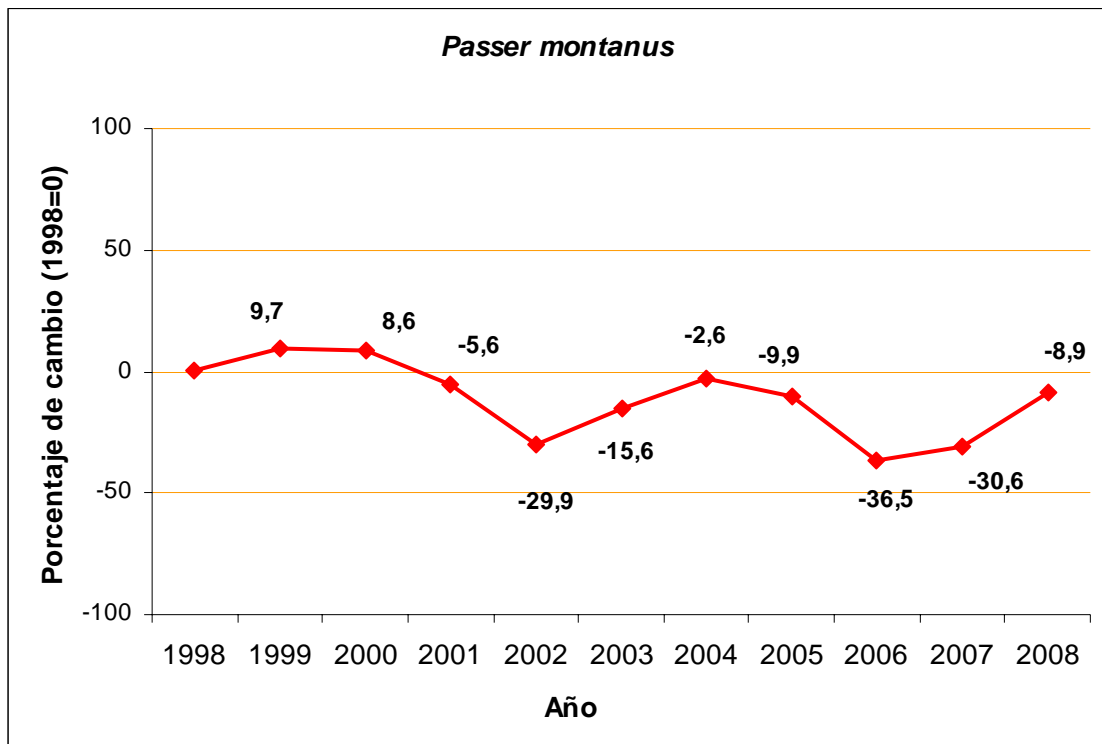
Carbonero común



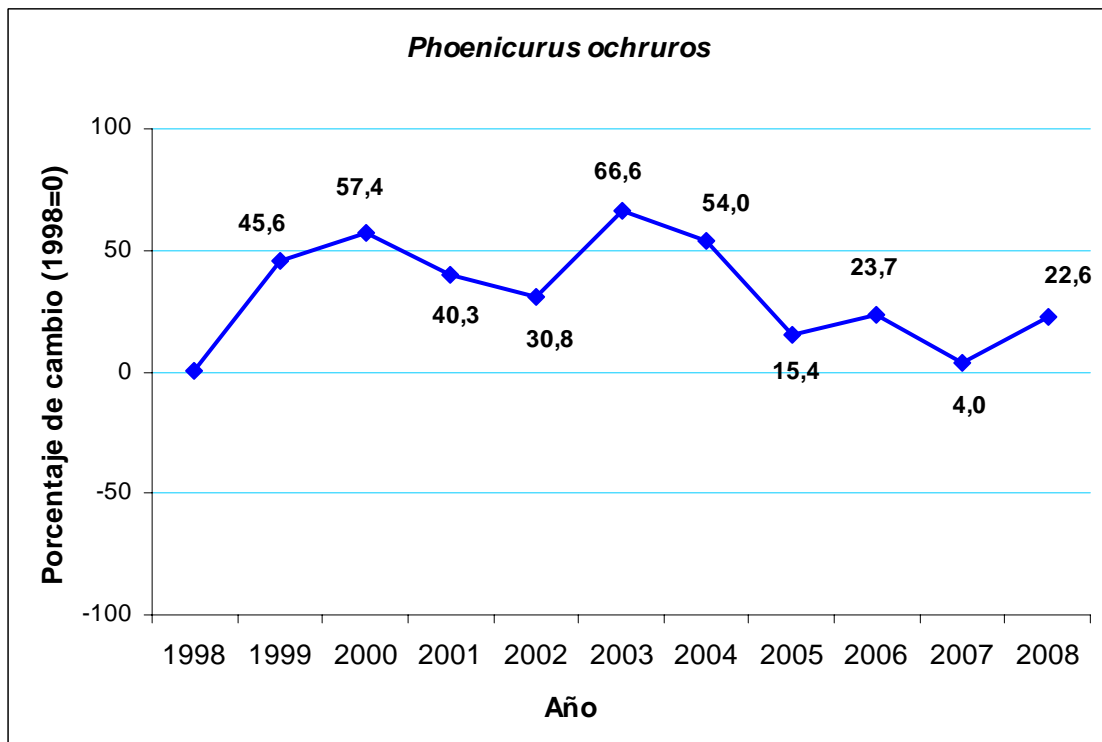
Gorrión común



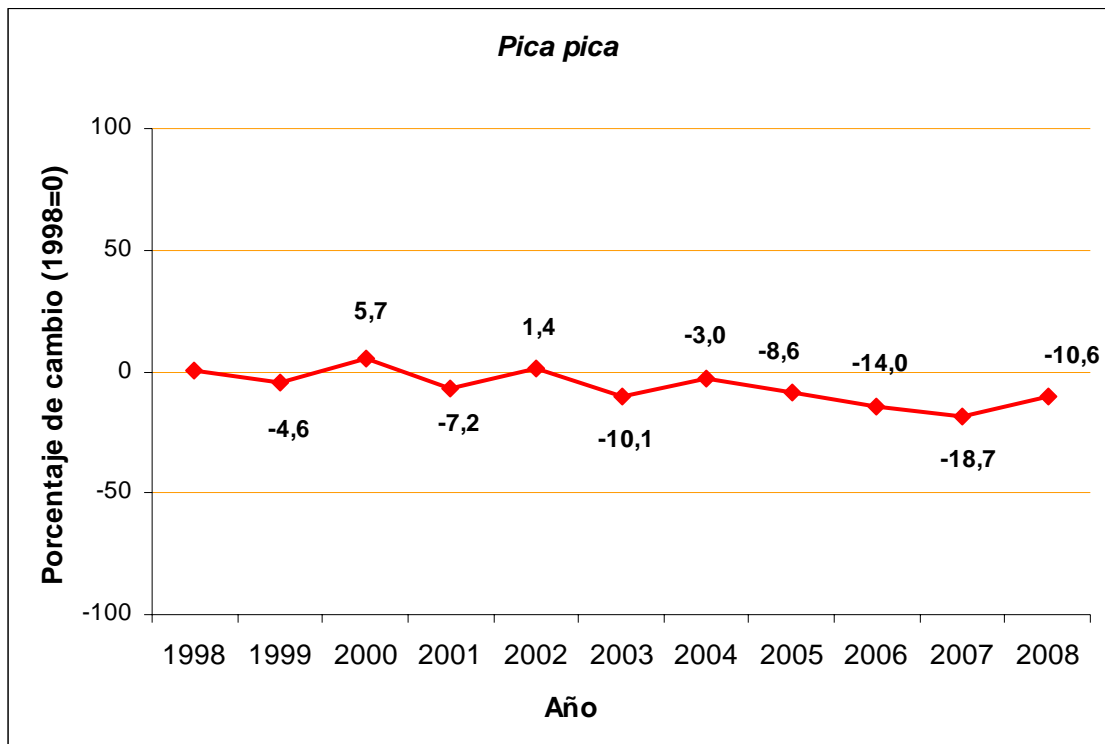
Gorrión molinero



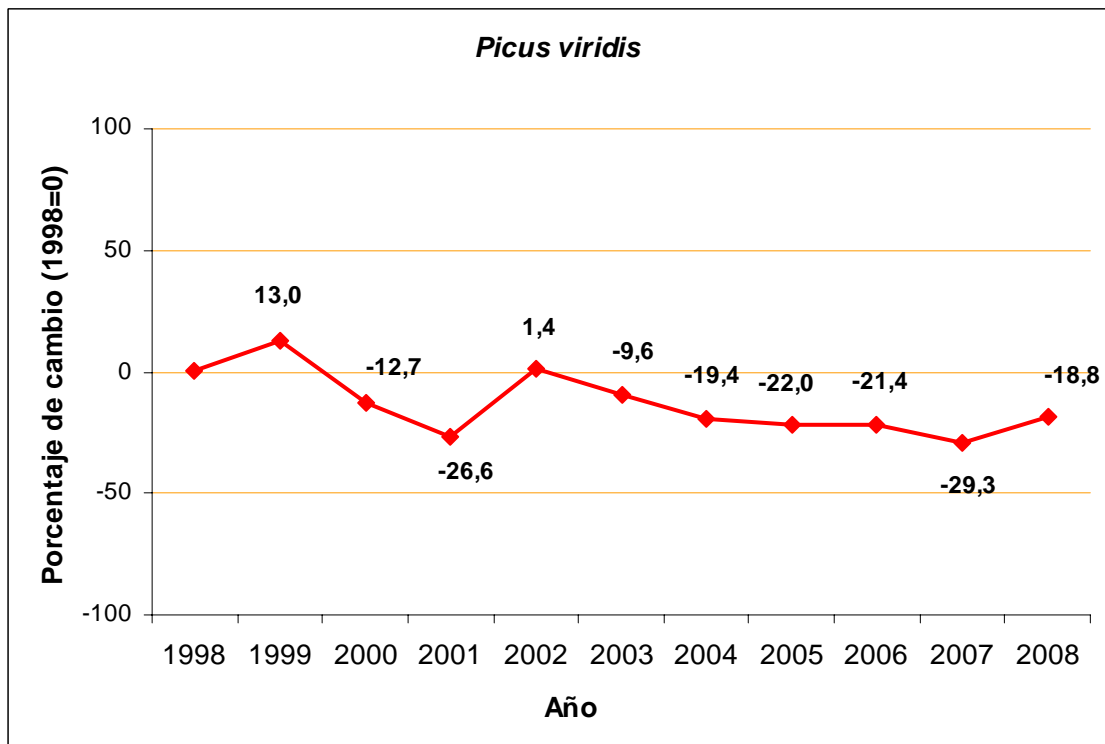
Colirrojo tizón



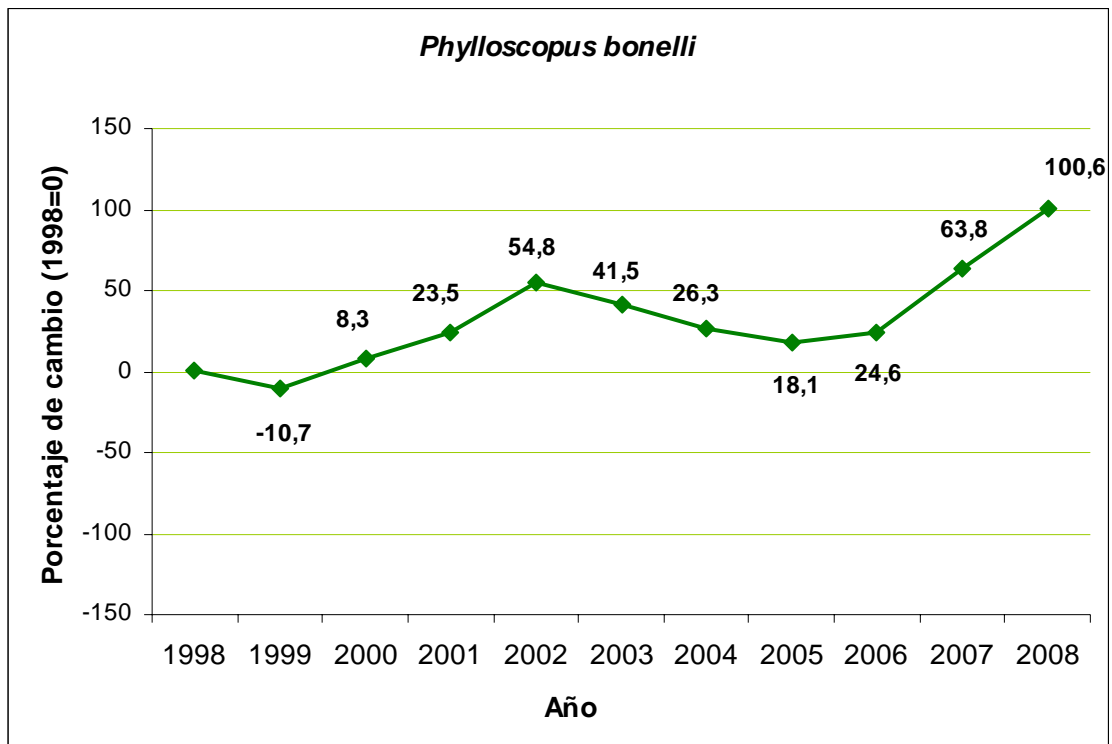
Urraca



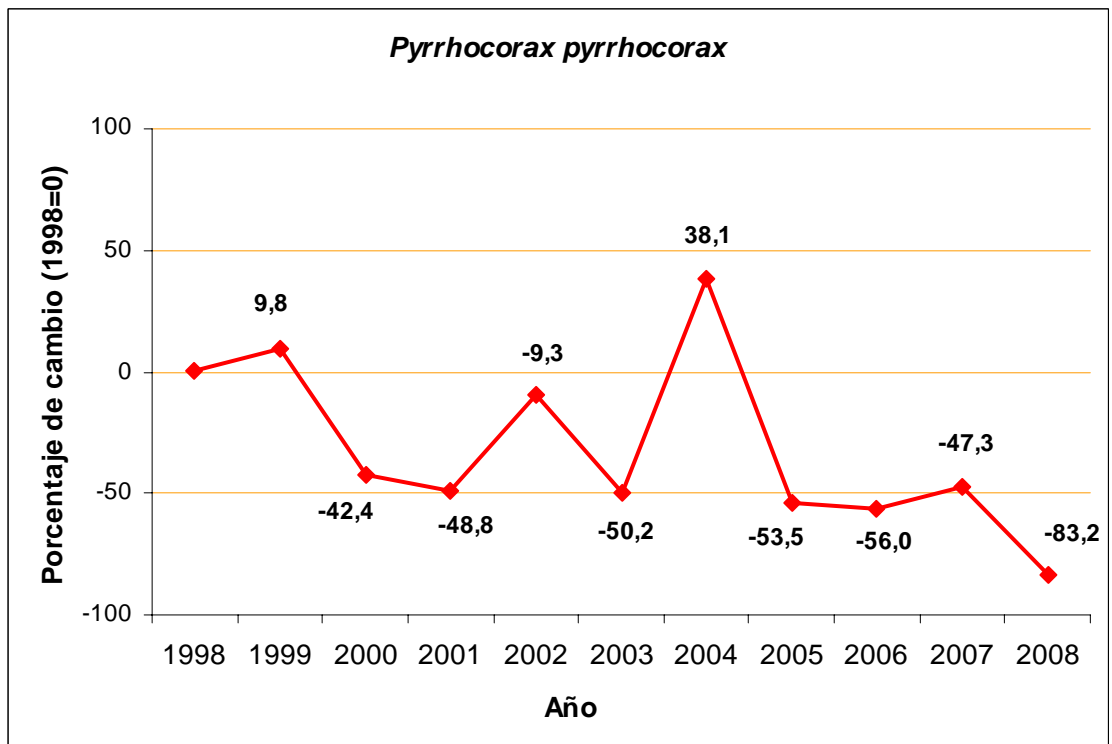
Pito real



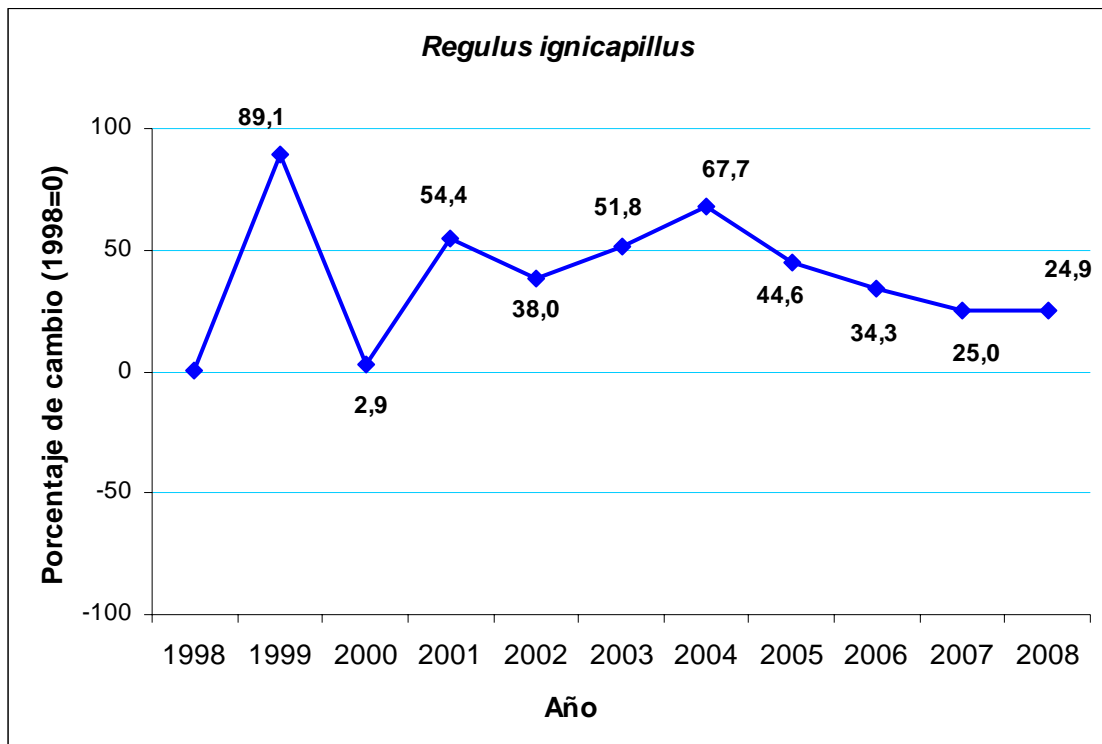
Mosquitero papialbo



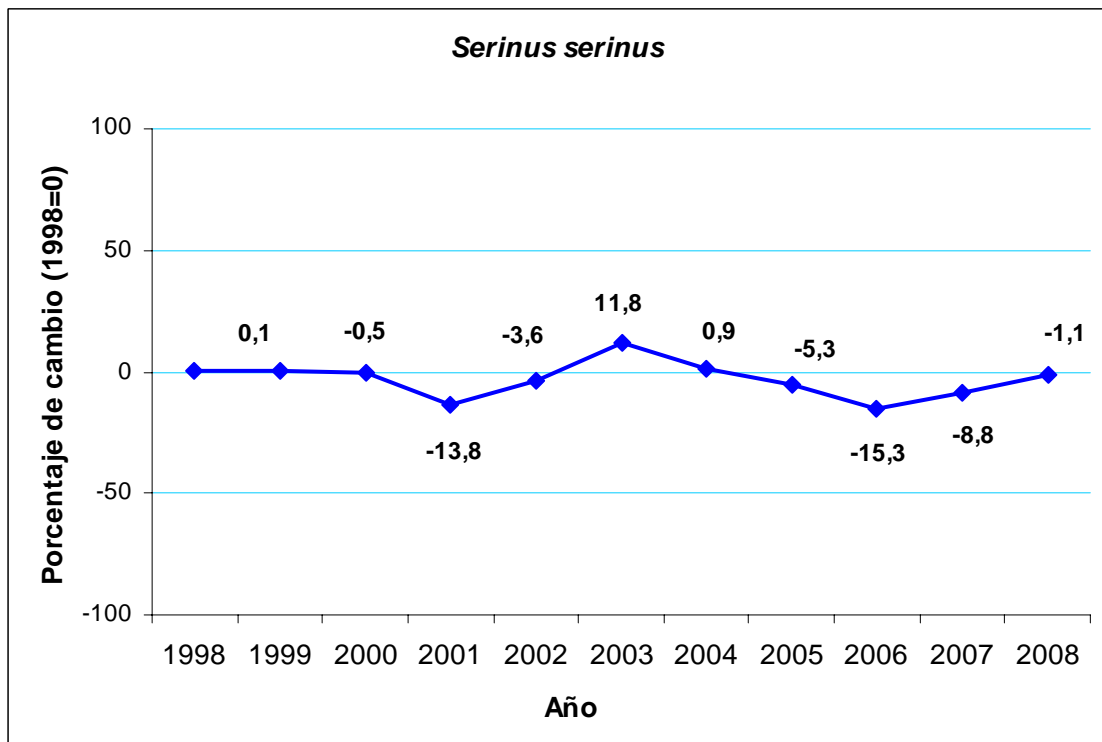
Chova piquirroja



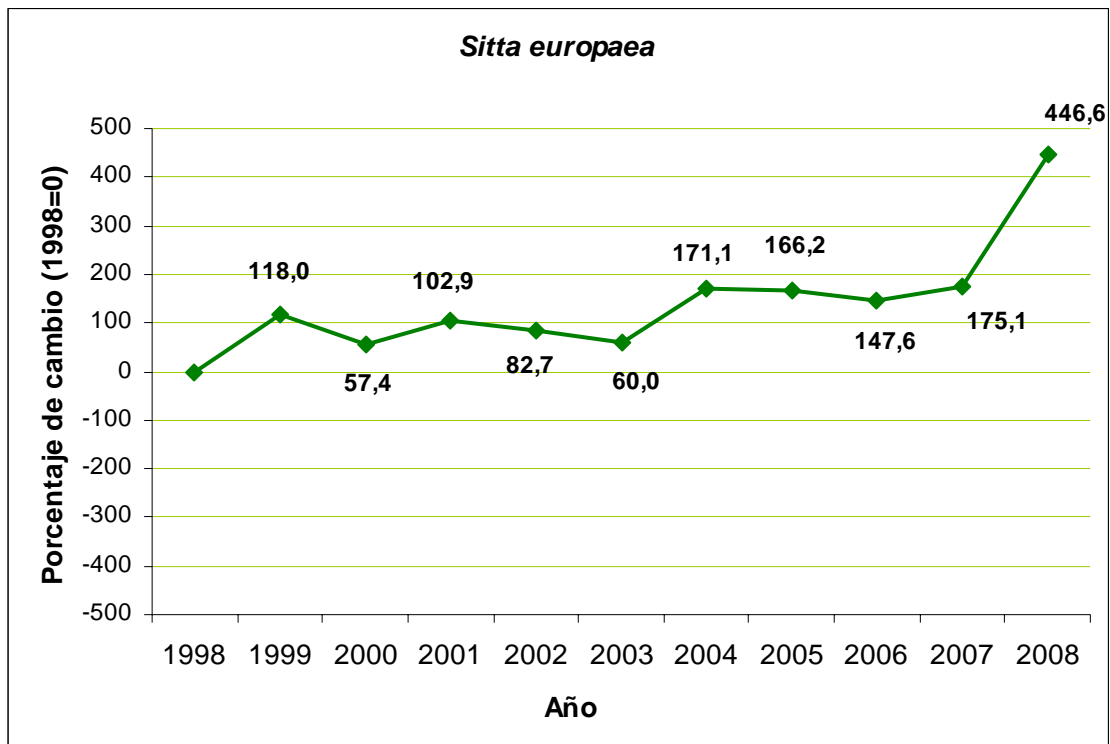
Reyezuelo listado



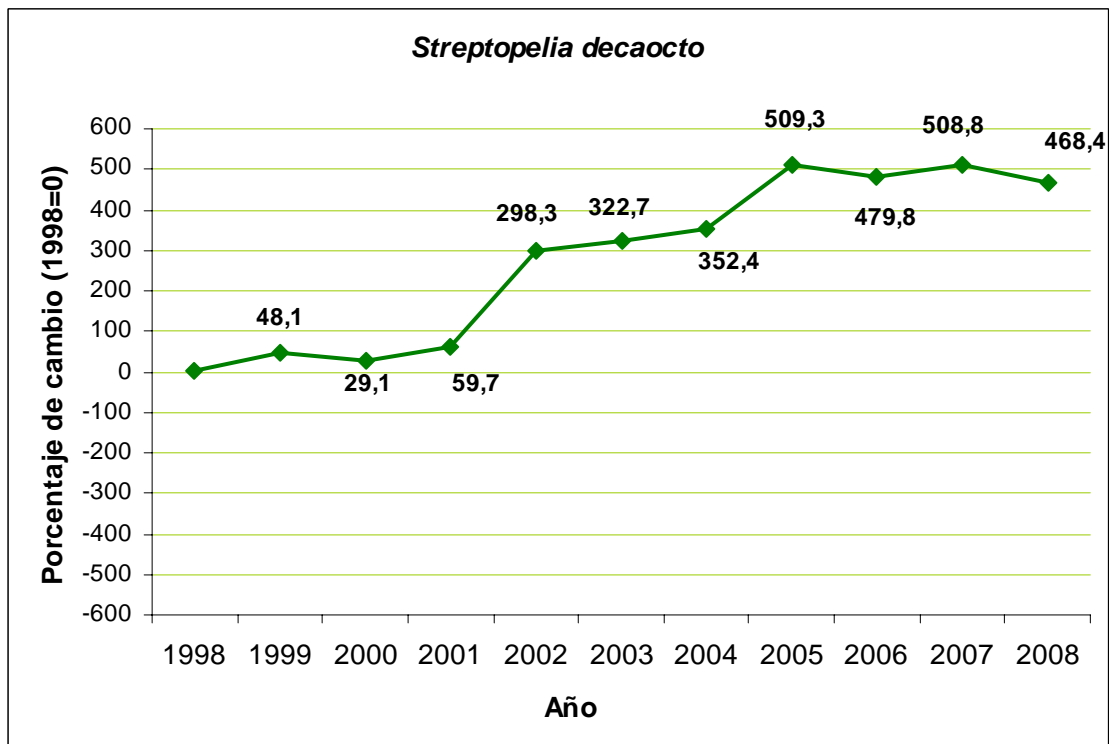
Verdecillo



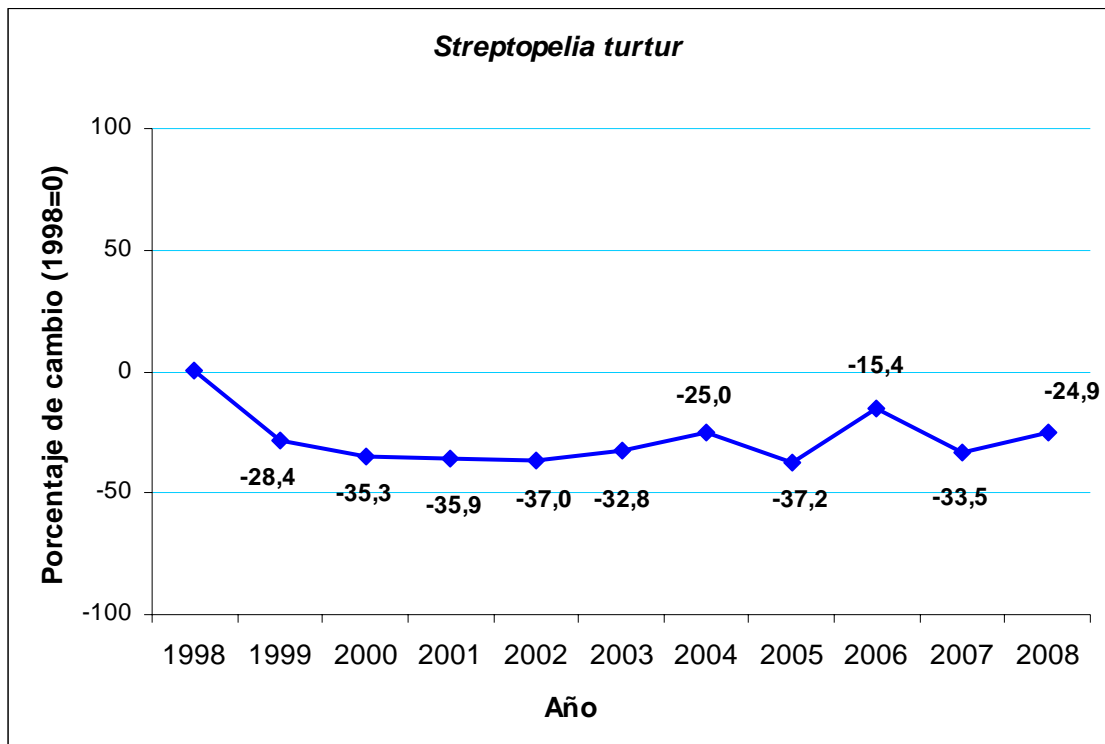
Trepador azul



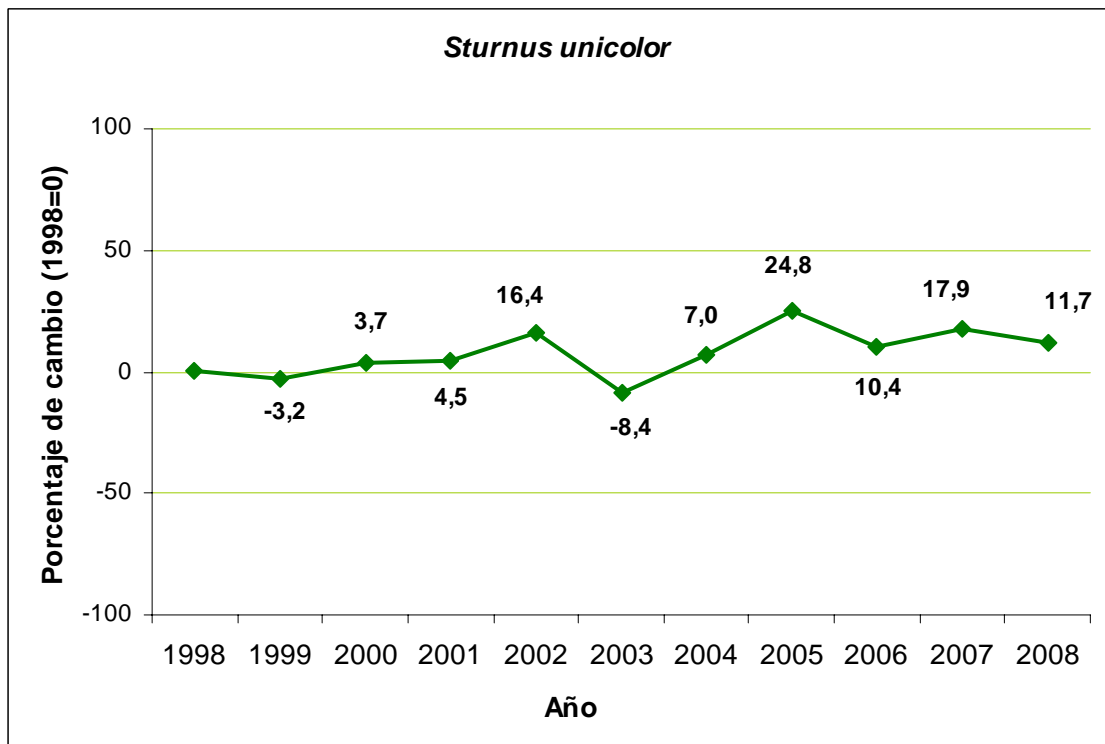
Tórtola turca



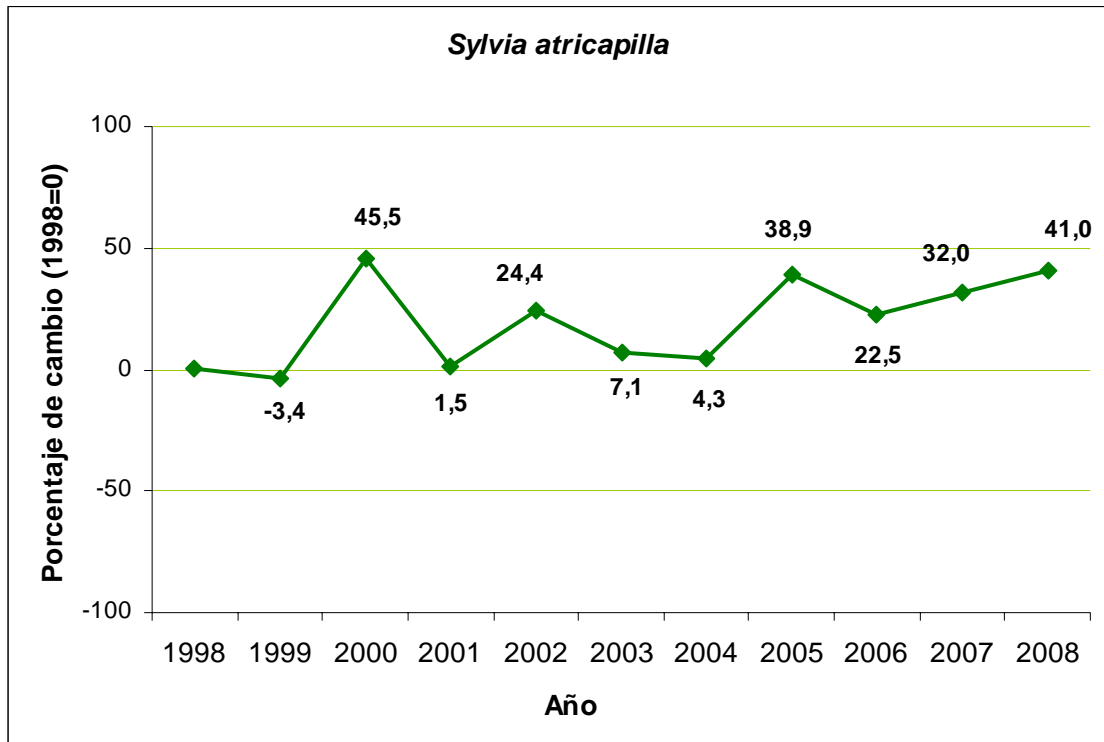
Tórtola europea



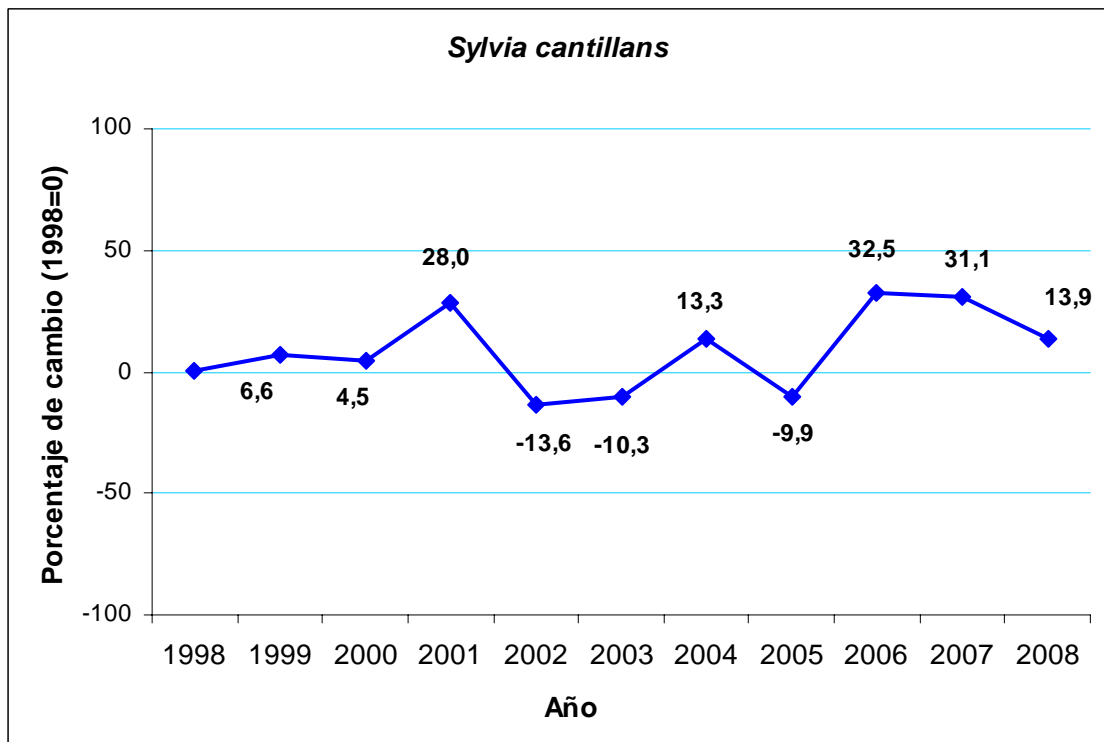
Estornino negro



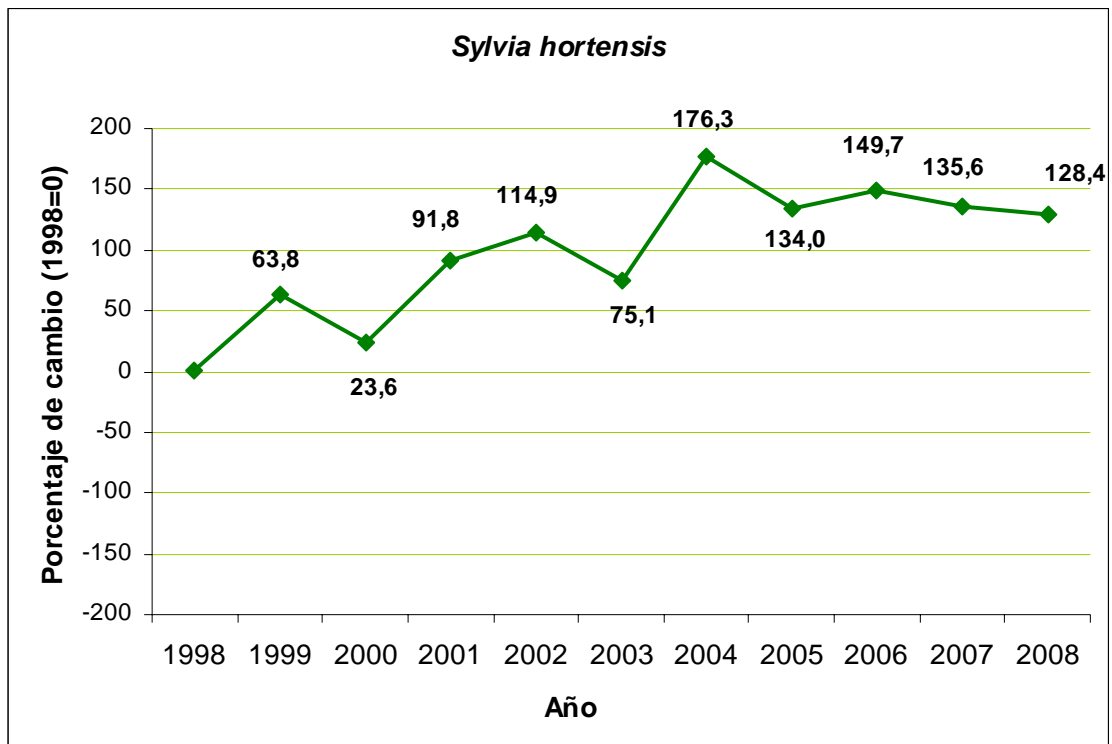
Curruca capirotada



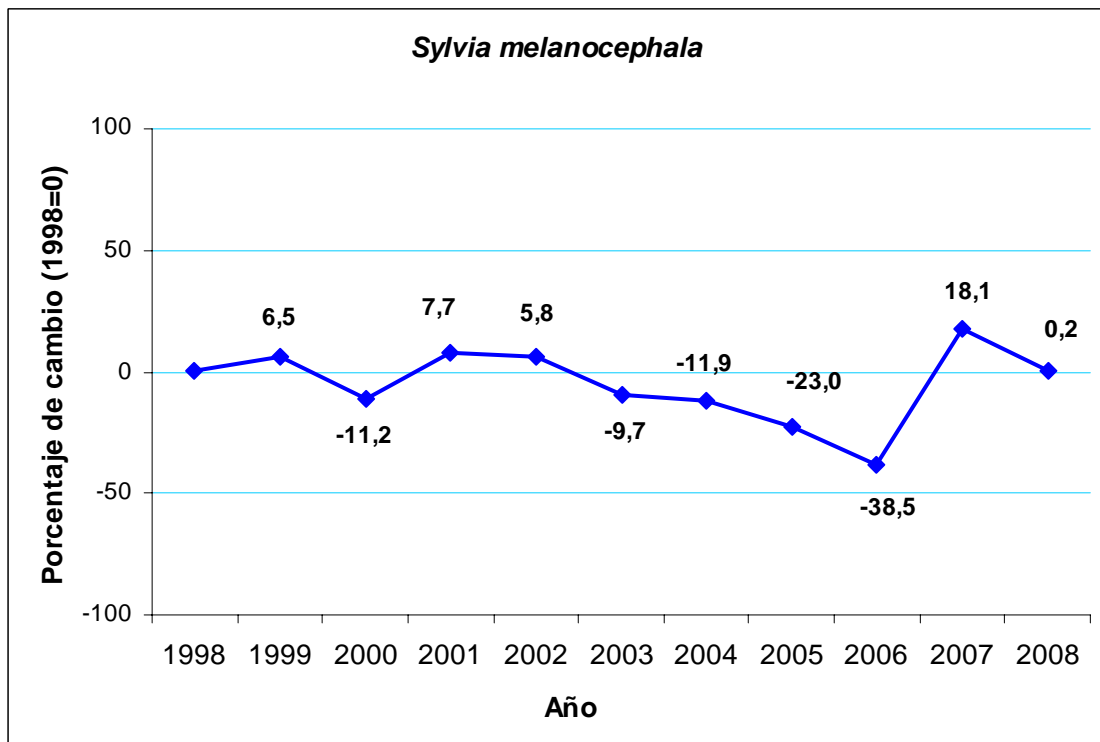
Curruca carrasqueña



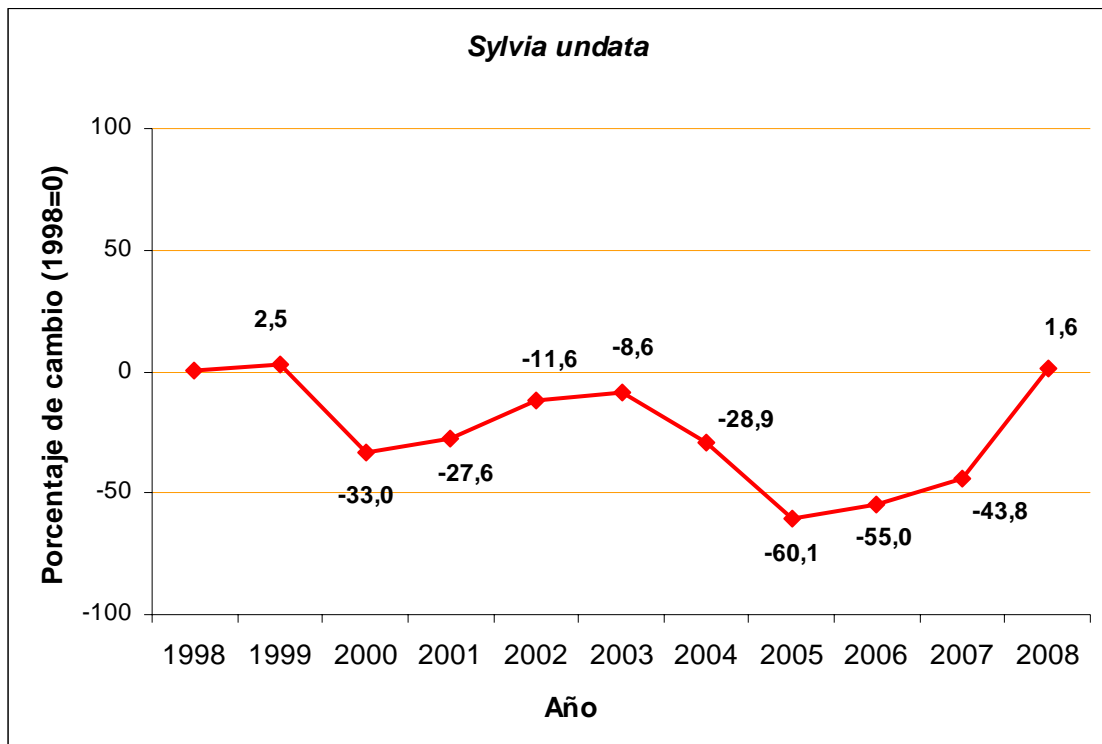
Curruca mirlona



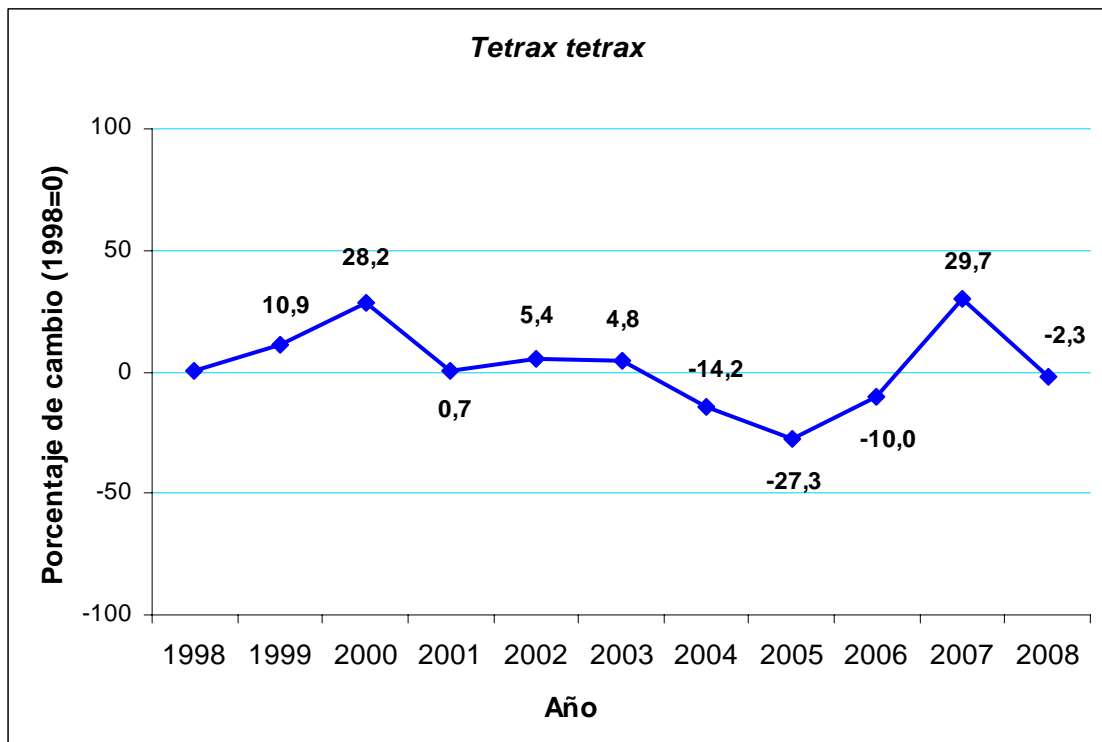
Curruca cabecinegra



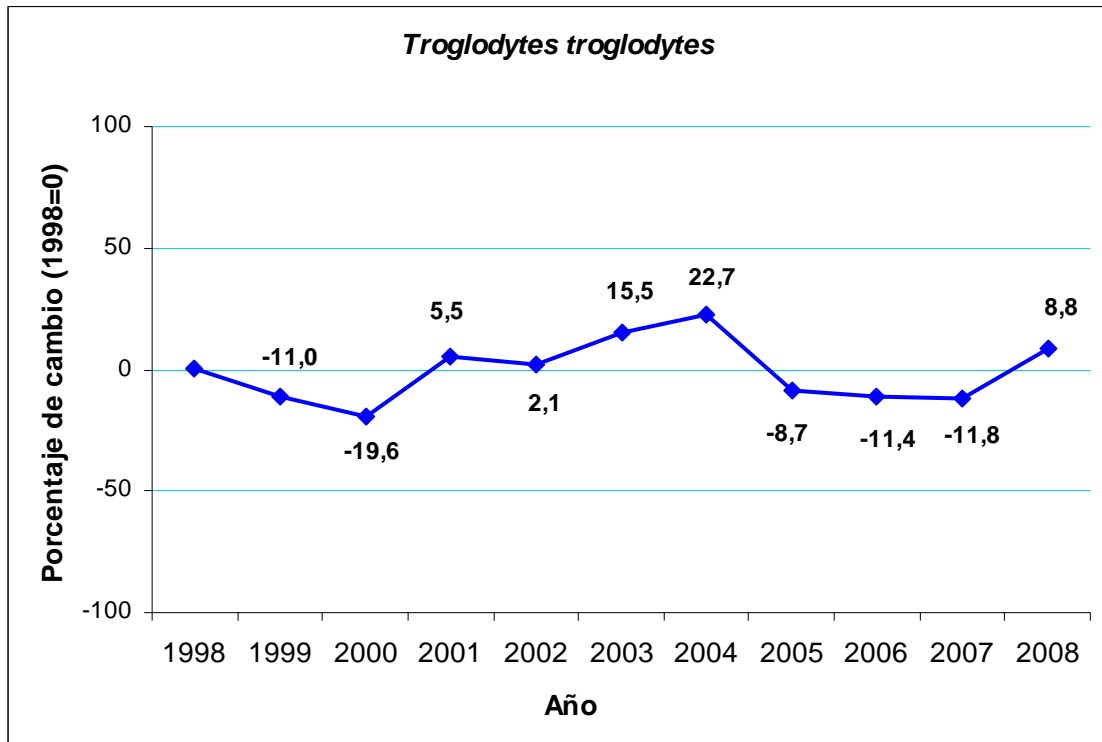
Curruca rabilarga



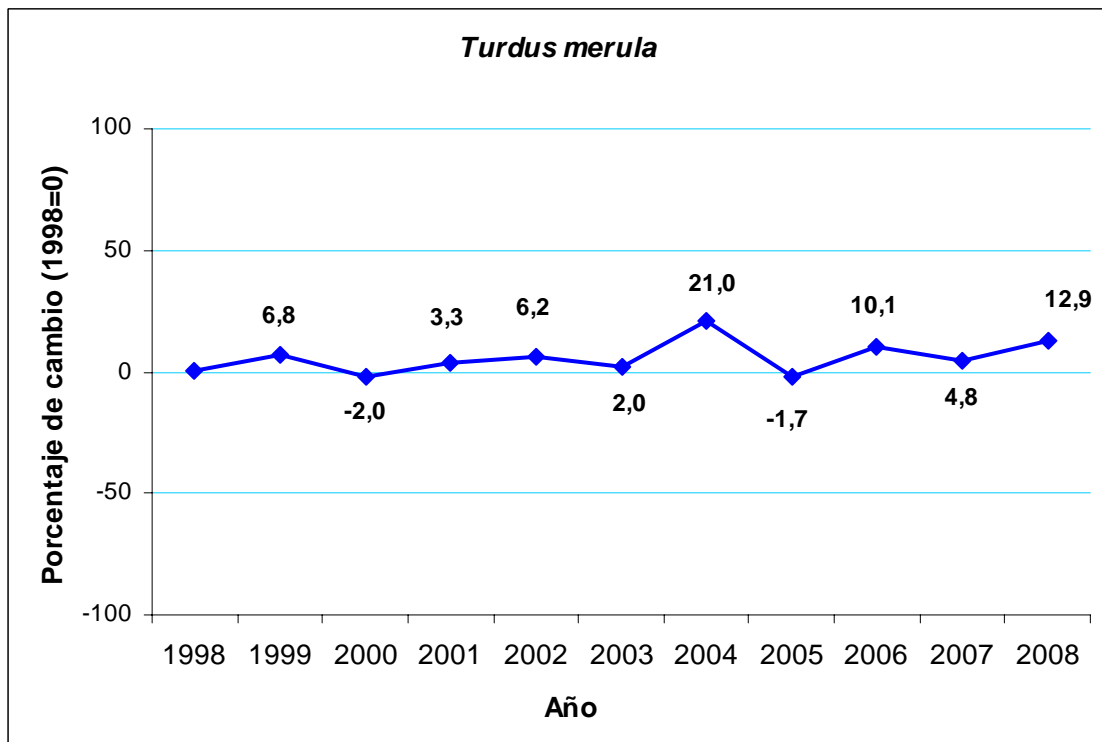
Sisión común



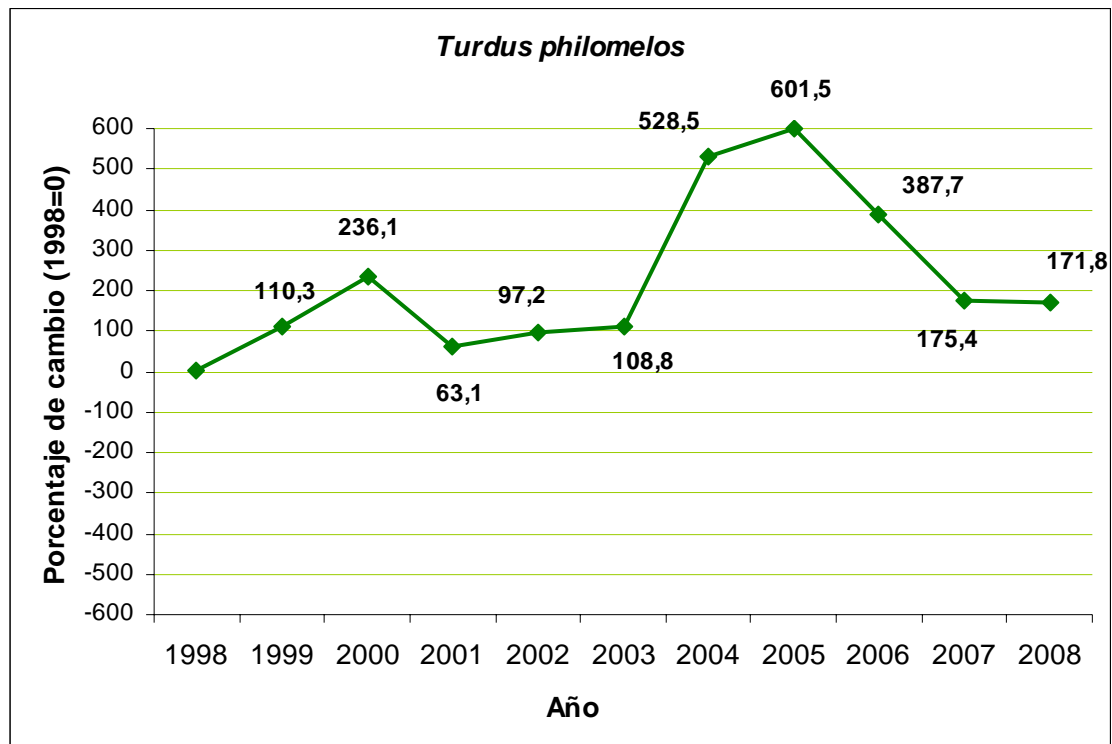
Chochín común



Mirlo común



Zorzal común



Abubilla

